

the dirt



SUMMER 2024 GARDENING NEWSLETTER

Bring the indoors out.

Expand your living space to make the most of your yard.

Outdoor living spaces are booming, with a growing variety of shapes and sizes to fit your lifestyle.

Whether you're looking for a lively gathering space for grilling, mingling or watching TV, or leaning more toward a tranquil and soothing retreat—there are limitless options available to turn your backyard into a valuable asset for entertaining, relaxing, or enjoying quality time with family in your own private oasis.

This summer, you can get free tips and ideas from several professional landscape designers at IRWD's new Dream-Design Your Yard workshop on Saturday, July 13. Go to [IRWD.com/events](https://www.irwd.com/events) to learn more or to register.

In the meantime, take some time to think about how you'd like to use your backyard.

Consider areas with plenty of sunlight for plants and greenery, and position your future living space where it has a functional connection to the inside of your house.



Let your mind wander about hardscape features you'll want to include, such as a grill island, a fireplace or water element. Where would you place them to encourage an easy flow pattern from one space to the other?

Planters, pots, lighting and flooring can help to define these areas, and to top things off, consider a folding glass wall for an easy and inviting flow within your new indoor-outdoor haven.

Visit [IRWD.com/landscape](https://www.irwd.com/landscape) for helpful resources and ideas.

Dream Designs.

Key advice to getting started on your new landscape.

Jonathan Stalvey



Jonathan Stalvey | Design Principal, TerraWorks Studio

Good things happen when old college friends reunite to follow their dreams. The partners at TerraWorks Studio joined forces years after leaving Cal Poly Pomona to combine their skills in landscape design, irrigation and maintenance, and are creating thoughtful and sustainable landscapes throughout Southern California.

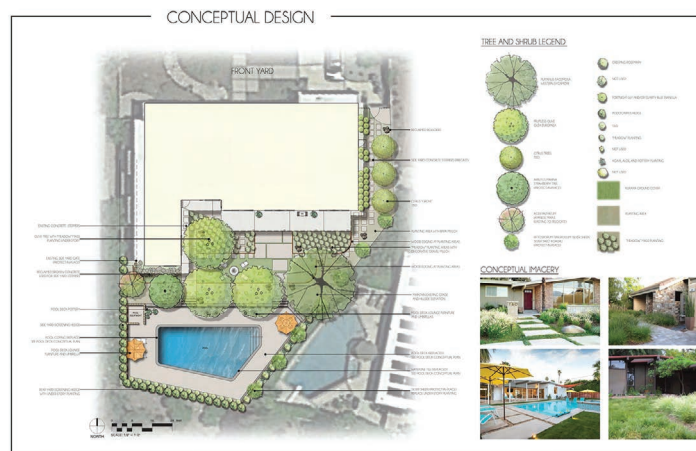
What's the best way to get started on a landscape transformation?

Stalvey: Just start, make that first mark and start generating ideas. Write down what you're thinking, and if you ever get brain fog or designer's block, you can always go back to those first marks to stay on track. Some of the best ideas have started with napkins at a restaurant or bar.

What key design elements do you recommend to homeowners?

Stalvey: Keep it simple. Avoid the urge to complicate your design, and focus on elements that make sense for what they do. Don't put a bioswale at the top of a slope where it won't collect water.

Design your planted areas based on available sunlight, and give your plantings the room they need to grow to maturity.



Any other words of advice?

Stalvey: Maintaining your landscape is important for the success of your new landscape. Make sure you have a good maintenance manual that includes details like when to mulch, or the types of fertilizers to use on which plants, and when. You can do the research yourself, or have a landscape designer like TerraWorks prepare it for you.

Get free, in-person tips! TerraWorks will be among other landscape design companies providing complimentary landscape advice at IRWD's Dream-Design Your Yard workshop Saturday, July 13. Go to IRWD.com/events for more information or to sign up.

Heart-leaved penstemon,
Keckiella cordifolia

Plan in summer, plant in fall.

Apply today! IRWD's \$5 turf replacement rebate ends soon.

NoMoMow!

We can't help you remove that unruly beard, but we can help you remove your water-thirsty lawn—making it easier for you to turn your yard into the space you want to live in.

From now through Sept. 1, IRWD will pay \$5 for every square foot of turf grass you remove and replace with water-efficient plants, sustainable landscape features or qualified permeable hardscapes.

#NoMoMow
**WE CAN'T
HELP YOU
REMOVE THAT.**

But we can help you
remove your lawn.

GET \$5/SQ FT

Hurry, offer ends Sept. 1.



Apply now to lock in your savings, and start planning your design so you're ready to roll for planting season in the fall.

Go to [IRWD.com/landscape](https://www.irwd.com/landscape) for everything you need. Get the details, apply for the rebate, browse the garden gallery and guided plant search for inspiration, and take advantage of other helpful resources to get started.



Strawberry tree

New tree rebate!

Customers participating in IRWD's Turf Replacement Rebate can now get \$100 for every new tree they plant as a part of their landscape transformation (maximum of five trees).

The strawberry tree (*Arbus unedo*) is one of 30 qualified trees to choose from. For information, click on the rebate terms and conditions at [IRWD.com/turfrebate](https://www.irwd.com/turfrebate).



Juan's tip of the season.

Sprinkler repairs? We'll pay half!

Summertime typically means your sprinklers are going full-throttle, so make sure they are working as efficiently as possible.

Maintenance and routine station testing are key—irrigation systems working properly one day can spew water wasting geysers the next. If your sprinkler system needs fixing, don't worry: IRWD will pay half the cost of qualified repairs. Go to [IRWD.com/sprinklerrepair](https://www.irwd.com/sprinklerrepair) to learn more, or to apply for the program.



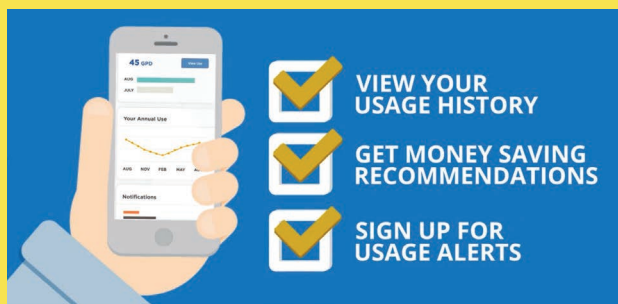
Looking ahead.

Your garden to-do list.

- **Smart timer:** Make the switch to a weather-based controller. Our rebates of up to \$255 will often cover the cost of the device. Go to [IRWD.com/rebates](https://www.irwd.com/rebates) to learn more.
- **Mulch:** Summer heat can parch a landscape. Spread 3 to 6 inches of mulch around plants to retain moisture. Go to [IRWD.com/mulchmadness](https://www.irwd.com/mulchmadness) to apply for half-off bulk purchases.
- **Plan for fall:** Start planning for the fall planting season. Go to [IRWD.com/landscape](https://www.irwd.com/landscape) for tips and helpful tools to help you redesign your yard.

Sign up for WaterInsight!

Curious about how much water you're using in your yard? IRWD's free WaterInsight portal provides helpful information about your water-use trends, identifying where and when you use it. It will also send alerts if a leak is detected. Sign up today at [IRWD.com/waterinsight](https://www.irwd.com/waterinsight).



Check your irrigation schedule.

Yes, it's hot. But are you overwatering? Check out the recommended watering schedule for any season at [IRWD.com/wateringguide](https://www.irwd.com/wateringguide) for a month-by-month breakdown of run times, cycles and the number of days per week you should be watering.

Need to contact IRWD?

Customer Service: 949-453-5300

Email: CustomerService@IRWD.com

Website: [IRWD.com](https://www.irwd.com)

Join the conversation on social media



@IrvineRanchWaterDistrict



@IRWDnews



@IRWDnews



IrvineRanchWD