

WELCOME!

BUSINESS OUTREACH PROGRAM LUNCHEON 2022



Irvine Ranch Water District

WATER BANKING

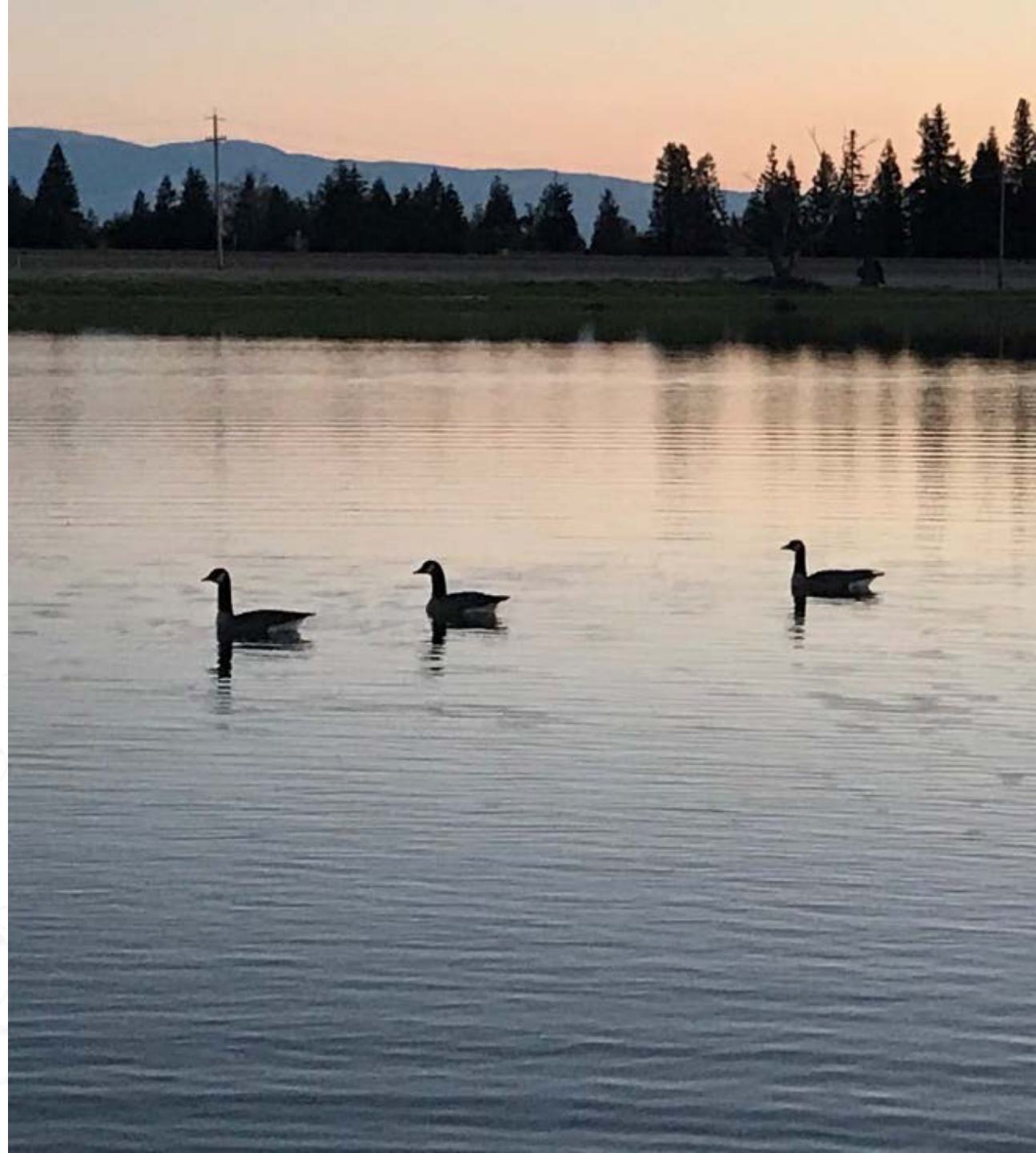
Natalie Palacio,
Water Resources Specialist

June 8, 2022



PRESENTATION OVERVIEW

- Water supply reliability
- IRWD water banking projects
- Kern Fan Groundwater Storage Project



WATER SUPPLY RELIABILITY CHALLENGES

Water supplies continue to be stressed in California due to:

- Increased competition for water
- Potential shortages from Colorado River
- Environmental constraints in Sacramento-San Joaquin Delta
- Climate change
- Recurring droughts

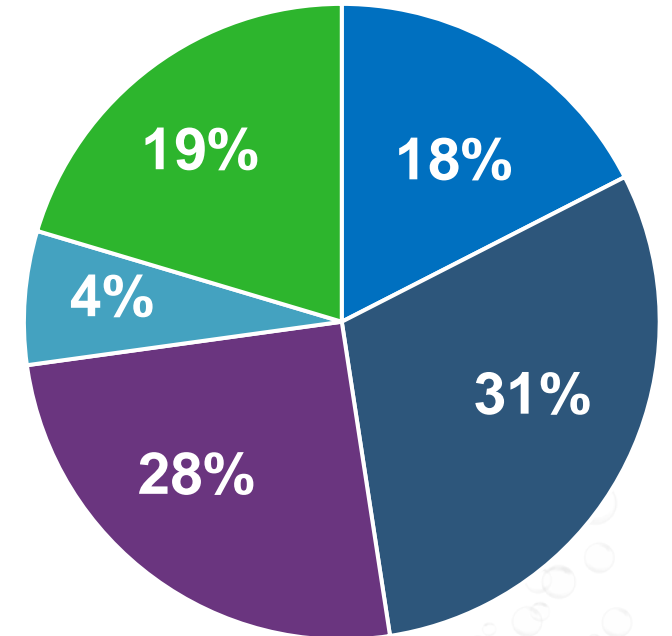


IRWD APPROACH TO WATER SUPPLY RELIABILITY

Our mission: To provide a safe and reliable water supply to customers

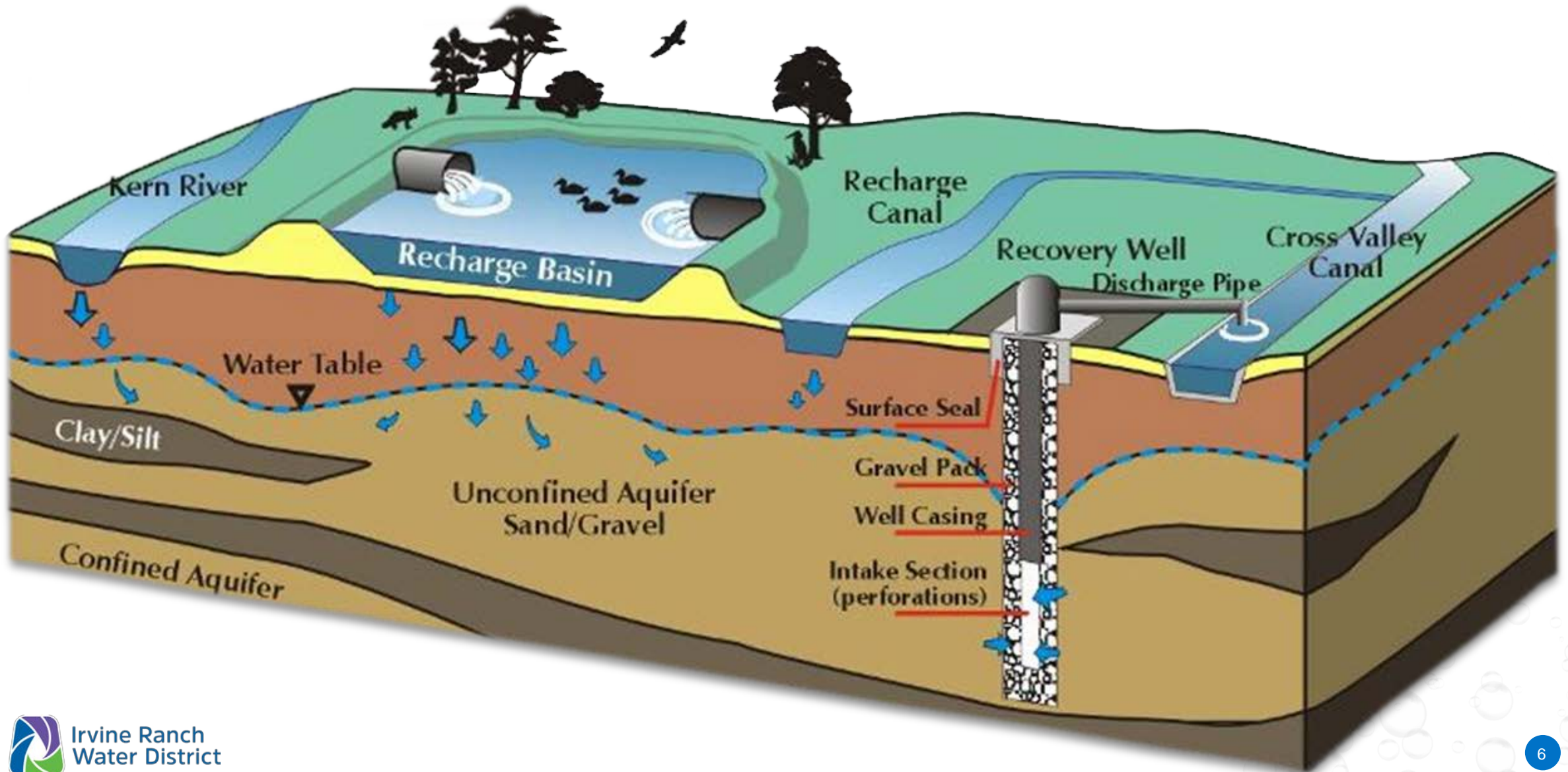
- Diversity is key to IRWD's water supply reliability:
 - Groundwater wells
 - Treated groundwater systems
 - Extensive water recycling system
 - Imported water
 - Local runoff capture
- Development of water banking facilities
 - IRWD Water Bank provides a reliable source of supplemental water that can be relied upon during major droughts and supply interruptions

2021



- Imported water
- Clear groundwater
- Recycled water
- Local surface water
- Treated groundwater

WATER BANKING: HOW DOES IT WORK?



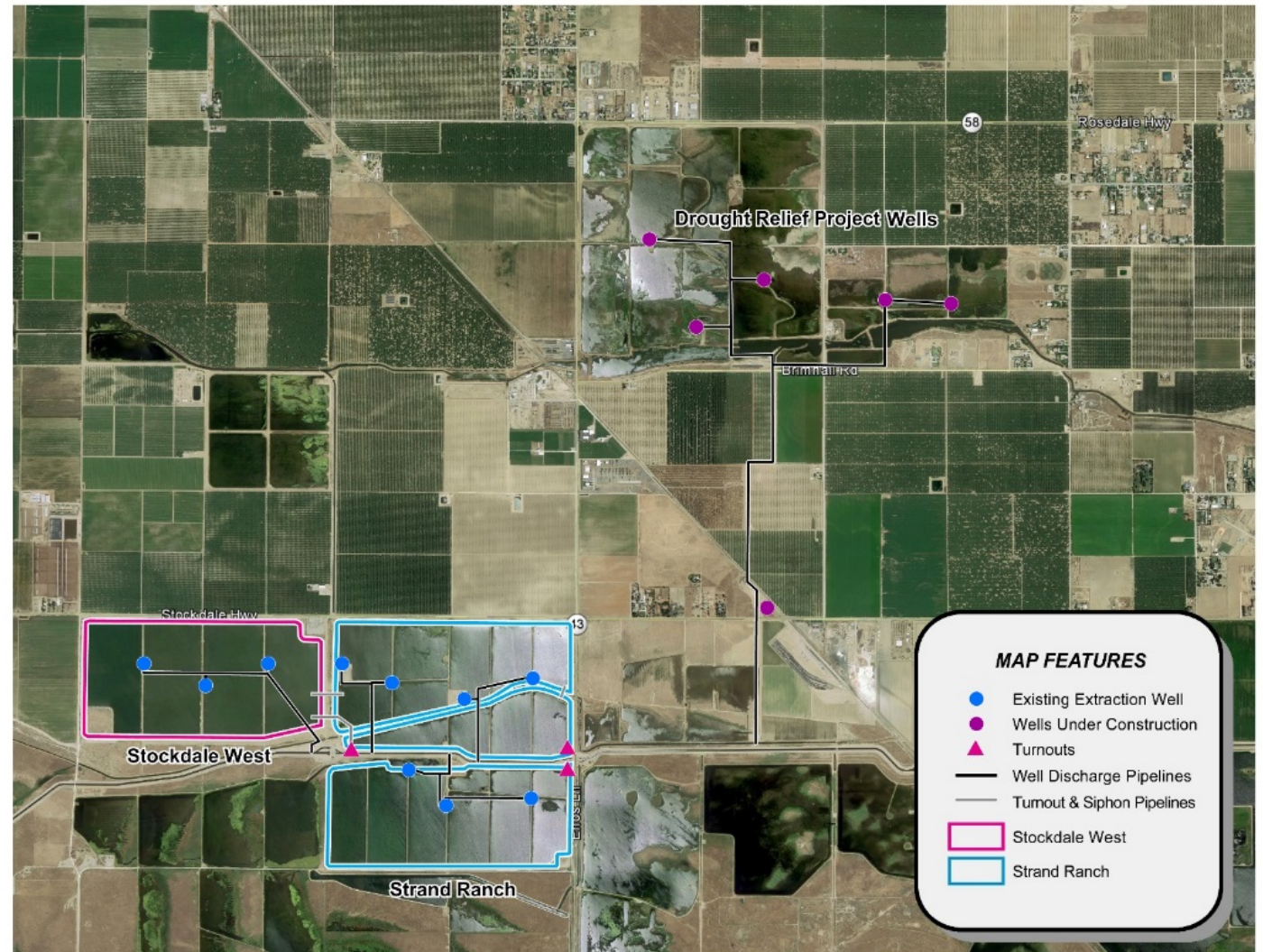
WATER BANKING OBJECTIVE:

Capture and store water available in wet years — for use in droughts and periods of supply interruptions



IRWD WATER BANKING FACILITIES

- Aquifer storage: 126,000 acre-feet
- Recharge land: 761 acres
- Recovery wells: 15
- Conveyance:
 - California Aqueduct
 - Cross Valley Canal
- Water supply through exchanges
- Expansion underway



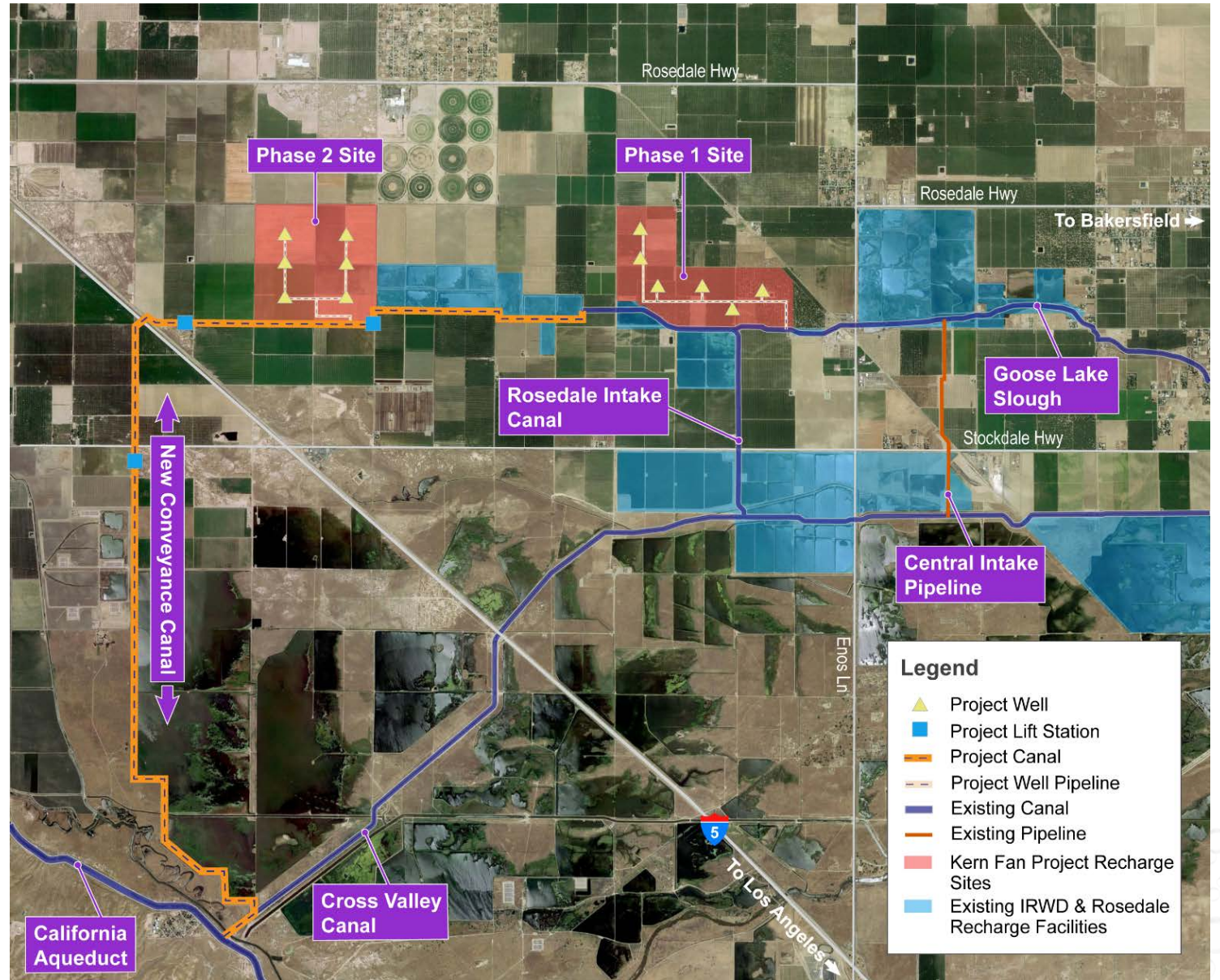
PARTNERSHIPS AND KEY AGREEMENTS

- Rosedale-Rio Bravo Water Storage District
 - Operating partner
 - Long-term water banking partnership
- Metropolitan Water District of Southern California (MWD) & Municipal Water District of Orange County (MWDOC)
 - Allows IRWD to secure SWP water to store in IRWD water banks *or* in Southern California
- Other agreements:
 - Unbalanced Exchange Agreements with various water banking partners

KERN FAN GROUNDWATER STORAGE PROJECT

Facilities and capacities:

- 1,200 acres of recharge basins
- 12 recovery wells (50,000 acre-feet per year)
- 100,000 acre-feet of storage
- New conveyance (500 cubic feet per second)
 - 3 lift stations



STATUS OF PROJECT

- EIR certified in December 2020
- Ongoing cumulative impact analysis by DWR
- Ongoing DWR analysis of hydraulics in California Aqueduct
- Development of exchange agreement to facilitate pulse flows
- Design contract awarded

THANK YOU!

Natalie Palacio
Water Resources Specialist
949-453-5499
palacio@IRWD.com

