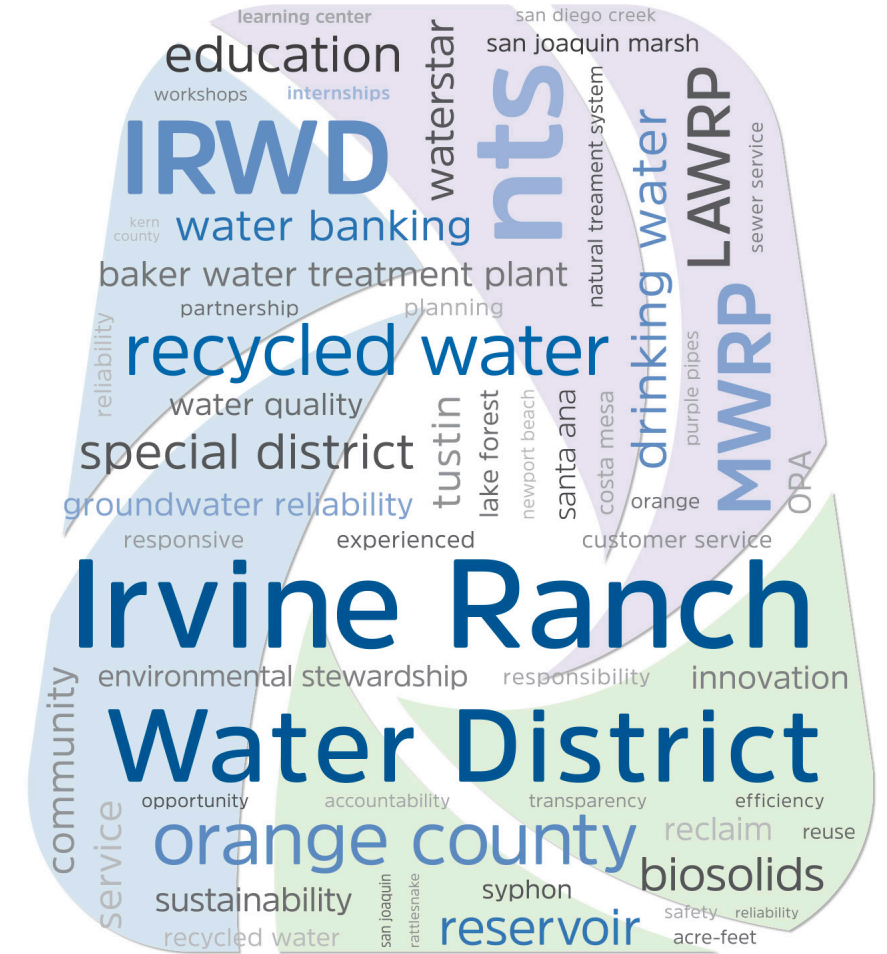


WELCOME

SYPHON RESERVOIR IMPROVEMENT PROJECT

CEQA PUBLIC SCOPING MEETING





SYPHON RESERVOIR IMPROVEMENT PROJECT

CEQA PUBLIC SCOPING MEETING
August 21, 2019



PRESENTATION OVERVIEW

- Purpose of Meeting
- California Environmental Quality Act (CEQA) Overview
- Irvine Ranch Water District (IRWD) Overview
- Project Description
- CEQA Process and Schedule
- Public Comments



PURPOSE OF MEETING

- **Initiate the CEQA Process**

- The Notice of Preparation published on August 2, 2019, initiated the environmental review process for the environmental impact report (EIR).
- 45-day public review and comment period.

- **Public Scoping**

- Scoping is early public consultation.
- Scoping is used to identify potential issues to address in the EIR.

- **Describe the Project**

- Increase the capacity of the existing Syphon Reservoir.
- Increase recycled water storage from approximately 500 to 5,000 acre-feet, to serve the community's seasonal and future water needs.

CALIFORNIA ENVIRONMENTAL QUALITY ACT (CEQA)

Disclosure



Identifies potentially
significant impacts
to the environment

Decision-
Making Tool



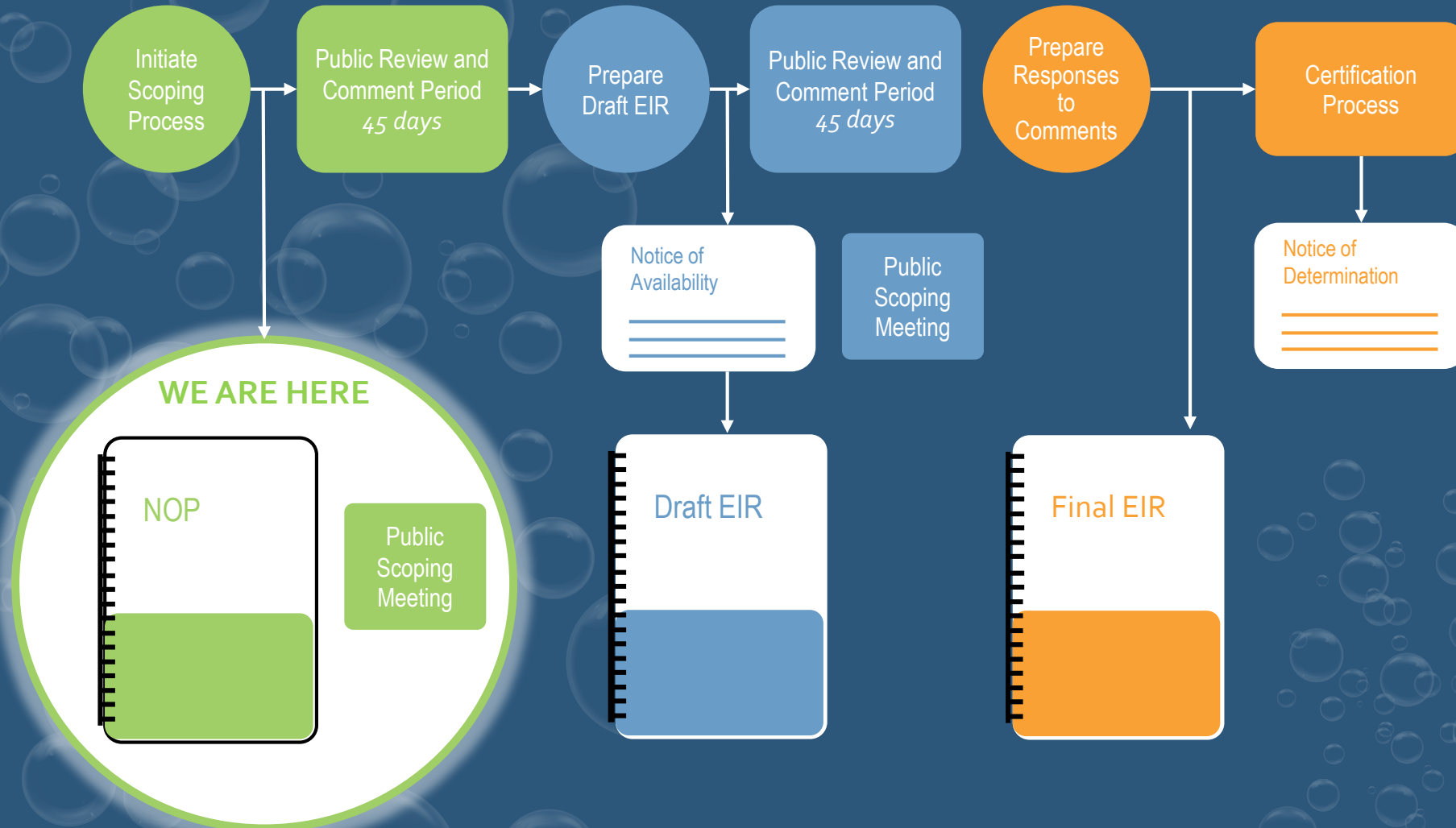
Requires public agencies
to consider impacts prior
to project approval

Reduce
Impacts



Identifies feasible
mitigation measures
and alternatives

CEQA PROCESS FOR THE SYPHON RESERVOIR EIR



IRVINE RANCH WATER DISTRICT OVERVIEW

- Current Water Supply Sources
- 21% = treated groundwater
- 29% = clear groundwater
- 6% = local surface water
- 18% = imported surface water
- 26% = recycled water
- Recycled Water Production
- Michelson Water Recycling Plant
- Los Alisos Water Recycling Plant
- Recycled Water Storage
 - Storage is used when supply exceeds demand in winter months.
 - When storage is full, recycled water is discharged to the ocean.



IRWD RECYCLED WATER RESERVOIRS IN THE COMMUNITY



**RATTLESNAKE
RESERVOIR**

Built 1959

1,480 AF capacity



**SAN JOAQUIN
RESERVOIR**

Built 1966

3,036 AF capacity



**SAND CANYON
RESERVOIR**

Built 1912

960 AF capacity



**SYPHON
RESERVOIR**

Built 1949

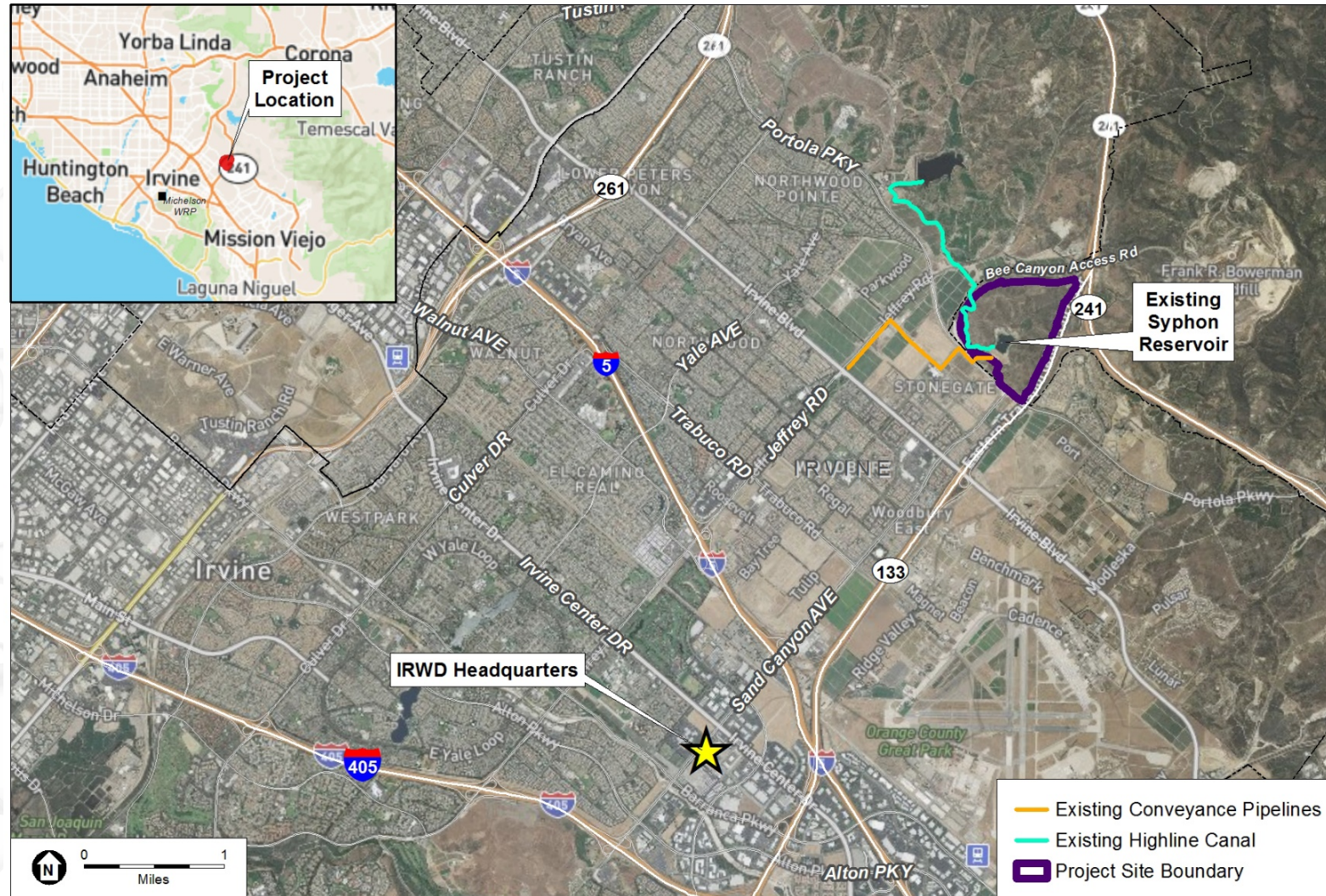
578 AF capacity
5,000 AF (proposed)

EXISTING SYPHON RESERVOIR



Existing capacity = approximately 500 acre-feet
Water levels fluctuate seasonally to balance
recycled water supply and demand.

PROJECT LOCATION MAP

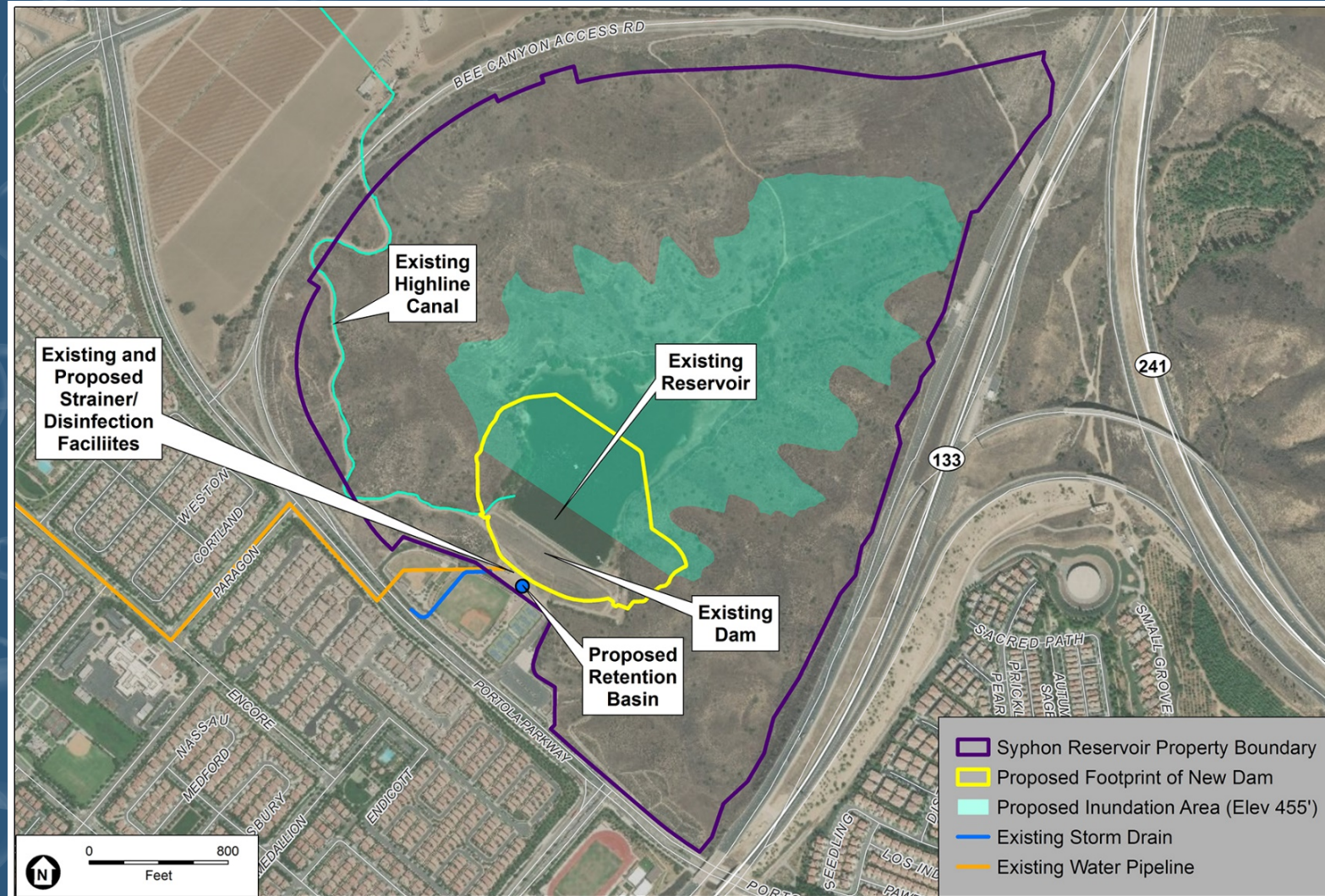


PROJECT OBJECTIVES

- **Improve local water supply reliability**
 - Store and use additional recycled water
 - Reduce purchases of more expensive, less-reliable imported water and make the community more self-sufficient.
- **Use 100% of recycled water produced by IRWD**
 - Reduce discharges of recycled water to the ocean.
 - Prepare for the future by storing more drought-proof water.
 - Keep parks, medians, athletic fields, public landscaping and golf courses green and beautiful.
- **Meet or exceed the latest safety standards**
 - Facilities are regulated by California Department of Water Resources, Division of Safety of Dams.



PROJECT SITE & PROPOSED PROJECT



DAM REPLACEMENT

- Replacement of the existing 59-foot-high engineered dam with a new 136-foot-high engineered dam with a 20-foot-wide crest.
- The new dam would be constructed primarily from on-site impermeable materials, although the importation of some specialty materials is anticipated.
- New dam would meet or exceed the latest safety standards.
- Project design will be peer reviewed through a rigorous process overseen by a technical advisory panel of respected reservoir experts.



RESERVOIR ENLARGEMENT

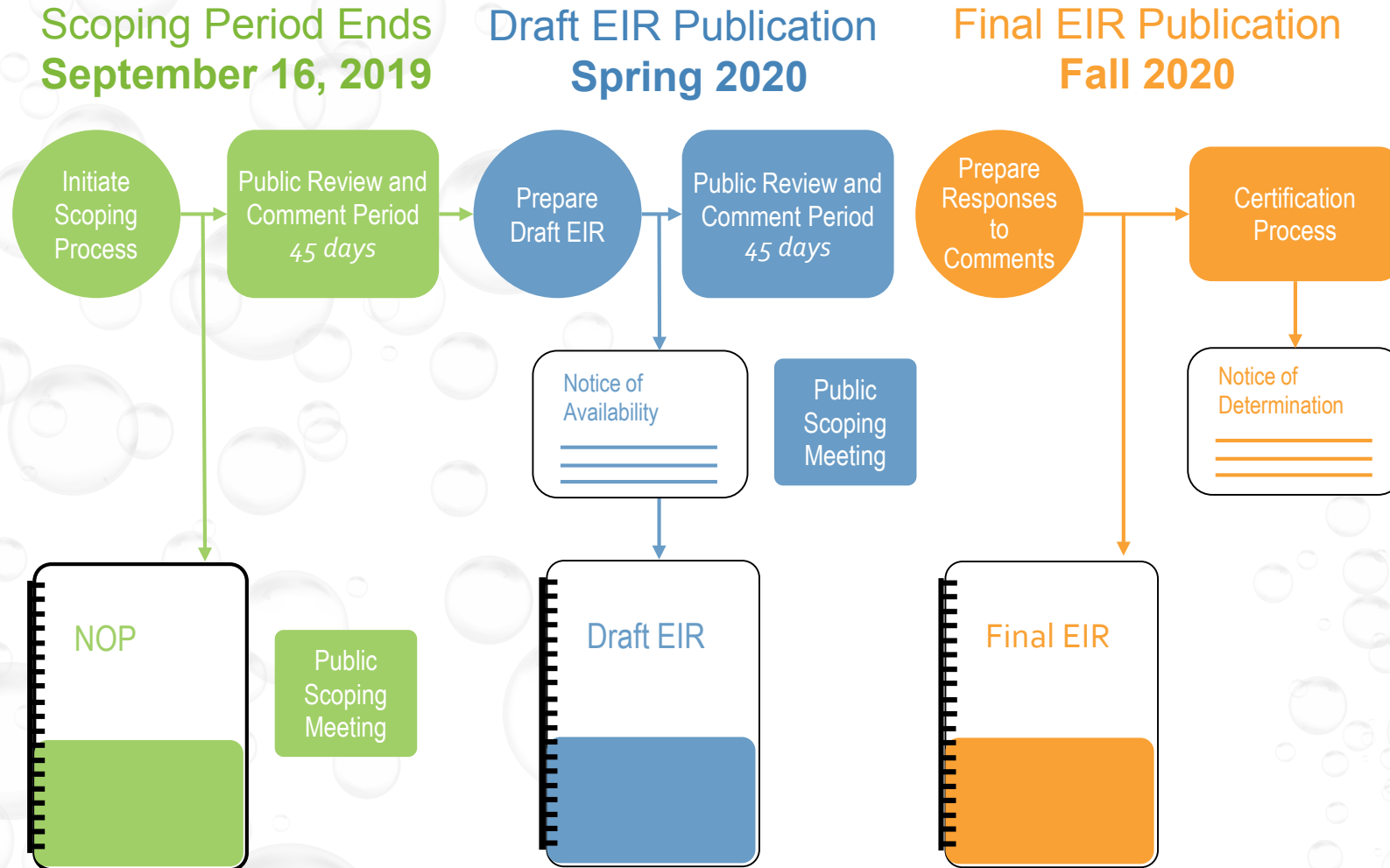
- The replacement dam would result in an increase in the reservoir's maximum water surface elevation from 376 feet to 456 feet above mean sea level and increase the reservoir's capacity from approximately 500 acre-feet (AF) to 5,000 AF.
- Expand the reservoir's shoreline and water surface area up to approximately 82 acres upstream of the dam.



TOPICS TO BE ANALYZED IN THE EIR

- Environmental resources required by CEQA
 - Aesthetics
 - Agriculture & Forestry Resources
 - Air Quality
 - Biological Resources
 - Cultural Resources
 - Energy
 - Geology & Soils
 - Greenhouse Gas Emissions
 - Hazards & Hazardous Materials
 - Hydrology & Water Quality
 - Land Use & Planning
 - Mineral Resources
 - Noise
 - Population & Housing
 - Public Services
 - Recreation
 - Traffic & Transportation
 - Tribal Cultural Resources
 - Utilities & Service Systems
 - Wildfire
- Growth Inducement
- Alternatives

CEQA SCHEDULE – NEXT STEPS



PUBLIC SCOPING COMMENTS

- NOP Availability
 - Heritage Park Library, 14361 Yale Ave, Irvine CA 92604
 - Online at the IRWD Web Site
 - www.irwd.com/doing-business/environmental-documents
- Comment period ends **September 16, 2019**
- Submit comments tonight or e-mail/mail comments to:

Irvine Ranch Water District
Attn: Jo Ann Corey, Environmental Compliance Specialist
P.O. Box 57000
Irvine, California 92619-7000
SyphonEIR@irwd.com

- Project information & updates:
www.syphonreservoirproject.com



PUBLIC COMMENTS