

CAPITAL BUDGET

FISCAL YEAR 2018-19

**Adopted
April 23, 2018**



Irvine Ranch Water District
15600 Sand Canyon Avenue
Irvine, CA 92618

FISCAL YEAR 2018-19 CAPITAL BUDGET

TABLE OF CONTENTS

<u>TAB</u>	<u>DESCRIPTION</u>
1.	Project Expenditures by Project Number with Improvement District Allocations
2.	Flagged Projects
3.	Project Expenditure Groups
4.	Water Improvement District Map
5.	Sewer Improvement District Map

Irvine Ranch Water District
Fiscal Year 2018-19 Capital Budget
Section 1 - Projected Expenditures by Project

System	Project	Project Title	Start	End	FY18-19 Direct	Total Direct	Improvement Districts																					
							1100	1110	1120	1130	1250	1530	1540	1850	1880	2100	2220	2120	2130	2250	2400	2530	256	2850	2880			
Potable Capital	10512	ASPHALT REPLACEMENT 18/19-DW	7/1/18	6/30/19	\$220,000	\$220,000	100.0																					
Recycled Capital	10513	ASPHALT REPLACEMENT 18/19-RW	7/1/18	6/30/19	\$220,000	\$220,000																						
Sewer Capital	10514	ASPHALT REPLACEMENT 18/19-SS	7/1/18	6/30/19	\$110,000	\$110,000																						
Potable Capital	01264	ASSET OPTIMIZATION-LAKE FOREST DEVELOPMENT	7/1/06	12/31/18	\$465,340	\$7,345,000	100.0																					
Potable Capital	06210	ASSET OPTIMIZATION-SAND CANYON PROFESSIONA	2/1/16	7/31/20	\$67,807	\$17,624,300	100.0																					
Potable Capital	10558	BAKER PIPELINE CAPACITY PURCHASE	7/1/18	6/30/19	\$357,500	\$357,500		32.6	3.3	3.0	47.5	11.1	0.4	1.6	0.5													
Potable Capital	10559	BAKER WTP FENCING & ACCESS IMPROVEMENTS	7/1/18	12/31/19	\$114,773	\$762,500		32.6	3.3	3.0	47.5	11.1	0.4	1.6	0.5													
Sewer Capital	10347	BUSINESS INTELLIGENCE (BI) DISASTER RECOVERY (D	9/1/17	12/31/18	\$58,125	\$155,000																						
Potable Capital	10345	BUSINESS INTELLIGENCE (BI)DISASTER RECOVERY (D	9/1/17	12/31/18	\$58,125	\$155,000	100.0																					
Potable Capital	06159	CANADA ROAD JOINT BONDING	6/1/18	6/30/22	\$6,486	\$233,200	100.0																					
Potable Capital	07053	CAPITAL PLANNING SUPPORT 18/19 DW	7/1/18	6/30/19	\$400,000	\$400,000		32.6	3.3	3.0	47.5	11.1	0.4	1.6	0.5													
Recycled Capital	07052	CAPITAL PLANNING SUPPORT 18/19 RW	7/1/18	6/30/19	\$400,000	\$400,000																						
Sewer Capital	07054	CAPITAL PLANNING SUPPORT 18/19 SS	7/1/18	6/30/19	\$400,000	\$400,000																						
Potable Capital	10546	CC&B SOFTWARE UPGRADE DW	5/1/19	12/31/20	\$142,450	\$1,424,500	100.0																					
Sewer Capital	10547	CC&B SOFTWARE UPGRADE SS	5/1/19	12/31/20	\$142,450	\$1,424,500																						
Potable Capital	06160	CENTRALIZED CONTROL ROOM AT MWRP-DW	6/1/18	6/30/22	\$4,054	\$170,000		32.6	3.3	3.0	47.5	11.1	0.4	1.6	0.5													
Sewer Capital	06161	CENTRALIZED CONTROL ROOM AT MWRP-SS	6/1/18	7/31/22	\$4,054	\$170,000																						
Potable Capital	07881	CNG FILLING STATION-DW	7/1/17	12/31/19	\$351,185	\$748,000		32.6	3.3	3.0	47.5	11.1	0.4	1.6	0.5													
Recycled Capital	07883	CNG FILLING STATION-RW	7/1/17	12/31/19	\$351,185	\$748,000																						
Sewer Capital	07882	CNG FILLING STATION-SS	7/1/17	12/31/19	\$351,185	\$748,000																						
Potable Capital	05410	COASTAL ZONE 2 PRV MODIFICATION (DPR16)	12/1/17	6/30/19	\$145,900	\$187,100																						
Potable Capital	06162	CRYSTAL COVE RECTIFIER INSTALLATION-DW	6/1/18	6/30/22	\$4,054	\$138,800	100.0																					
Recycled Capital	06163	CRYSTAL COVE RECTIFIER INSTALLATION-RW	6/1/18	6/30/22	\$2,432	\$133,300																						
Recycled Capital	06164	CULVER ANODE BED AND RECTIFIER #5 REPLACEME	6/1/18	6/30/22	\$6,486	\$244,200																						
Recycled Capital	10588	CULVER DRIVE RW ACP PIPE REPLACEMENT	3/1/18	7/31/19	\$580,754	\$717,000																						
Potable Capital	07893	DATS AND IDP INSTRUMENTATION MODS-DW	6/1/18	6/30/20	\$50,997	\$112,300		32.6	3.3	3.0	47.5	11.1	0.4	1.6	0.5													
Recycled Capital	07894	DATS AND IDP INSTRUMENTATION MODS-RW	6/1/18	6/30/20	\$50,997	\$112,300																						
Potable Capital	06165	DRWF SURGE TANKS	1/1/16	12/31/18	\$104,976	\$1,250,500		32.6	3.3	3.0	47.5	11.1	0.4	1.6	0.5													
Potable Capital	07087	DRWF WELL 10 REHAB	2/1/18	3/31/19	\$697,083	\$770,000	100.0																					
Potable Capital	07088	DRWF WELL 11 REHAB	3/1/18	8/31/19	\$657,961	\$770,000	100.0																					
Potable Capital	10098	DRWF WELL 12 REHAB	8/1/18	8/31/19	\$657,961	\$770,000	100.0																					
Potable Capital	07089	DRWF WELL 14 REHAB	6/1/19	8/31/20	\$4,945	\$770,000	100.0																					

							Improvement Districts																		
System	Project	Project Title	Start	End	FY18-19 Direct	Total Direct	1100	1110	1120	1130	1250	1530	1540	1850	1880	2100	2220	2120	2130	2250	2400	2530	256	2850	2880
Potable Capital	07091	DRWF WELL 16 REHAB	2/1/18	3/31/19	\$697,083	\$770,000	100.0																		
Potable Capital	07090	DRWF WELL 17 REHAB	7/1/17	7/31/18	\$17,488	\$770,000	100.0																		
Potable Capital	10097	DRWF WELL 2 REHAB	8/1/17	7/31/18	\$18,750	\$770,000	100.0																		
Potable Capital	07092	DRWF WELL 4 REHAB	6/1/19	6/30/22	\$667	\$770,000	100.0																		
Potable Capital	05761	EAST IRVINE ZONE 1 RESERVOIR INTERIOR RECOATIN	6/1/18	6/30/22	\$1,946	\$2,748,500	100.0																		
Potable Capital	05406	EL MODENA INLET MODIFICATION	6/1/18	6/30/22	\$2,270	\$156,200		32.6	3.3	3.0	47.5	11.1	0.4	1.6	0.5										
Recycled Capital	10093	EMERGENCY MWRP RW DIVERSION TO SAN DIEGO C	7/1/17	12/31/19	\$652,412	\$1,905,000											33.1	3.4	3.4	48.6		9.6	0.3	1.3	0.3
Potable Capital	07444	ENERGY STORAGE SYSTEMS	7/1/16	1/31/19	\$55,308	\$272,200		32.6	3.3	3.0	47.5	11.1	0.4	1.6	0.5										
Potable Capital	03566	ENTERPRISE ASSET MGMT SOFTWARE IMPLEMENT-	10/1/11	12/31/19	\$488,595	\$2,682,100		32.6	3.3	3.0	47.5	11.1	0.4	1.6	0.5										
Sewer Capital	03567	ENTERPRISE ASSET MGMT SOFTWARE IMPLEMENT-S	10/1/11	12/31/19	\$488,595	\$2,682,100											33.1	3.4	3.4	48.5		9.7	0.3	1.3	0.3
Potable Capital	07146	GEN SYS MODS 18/19-DW	7/1/18	6/30/19	\$190,300	\$190,300		32.6	3.3	3.0	47.5	11.1	0.4	1.6	0.5										
Recycled Capital	07147	GEN SYS MODS 18/19-RW	7/1/18	6/30/19	\$100,500	\$100,500											14.6	10.7	4.1	51.0	7.7	10.4		1.5	
Sewer Capital	07157	GEN SYS MODS 18/19-SS	7/1/18	6/30/19	\$330,000	\$330,000											100.0								
Potable Capital	10605	GP_DEP 250_FY 18_19	7/1/18	6/30/20	\$903,000	\$903,000	25.1	2.8	0.3	0.3	4.2	1.0		0.1		45.5	4.9	1.5	0.8	10.3	0.8	2.1		0.3	
Potable Capital	10606	GP_DEP 515_FY 18_19	7/1/18	6/30/20	\$52,000	\$52,000	25.1	2.8	0.3	0.3	4.2	1.0		0.1		45.5	4.9	1.5	0.8	10.3	0.8	2.1		0.3	
Potable Capital	10607	GP_DEP 600_FY 18_19	7/1/18	6/30/20	\$287,050	\$287,050	25.1	2.8	0.3	0.3	4.2	1.0		0.1		45.5	4.9	1.5	0.8	10.3	0.8	2.1		0.3	
Potable Capital	10608	GP_DEP 740_FY 18_19	7/1/18	6/30/20	\$24,000	\$24,000	25.1	2.8	0.3	0.3	4.2	1.0		0.1		45.5	4.9	1.5	0.8	10.3	0.8	2.1		0.3	
Potable Capital	10609	GP_DEP 870_FY 18_19	7/1/18	6/30/20	\$1,428,200	\$1,428,200	25.1	2.8	0.3	0.3	4.2	1.0		0.1		45.5	4.9	1.5	0.8	10.3	0.8	2.1		0.3	
Recycled Capital	06198	IIC EAST ZONE B BPS UPGRADES	1/1/16	12/31/19	\$1,418,137	\$2,128,600												54.2		23.1		22.7			
Recycled Capital	05823	ILP NORTH CONVERSION-PIPELINES	3/1/14	12/31/18	\$1,168,571	\$10,991,100											2.1		2.5	1.0	46.3	1.8	46.0		0.3
Recycled Capital	05407	ILP NORTH CONVERSION-RESERVOIR	3/1/14	6/30/19	\$2,500,135	\$14,382,500											0.3		40.1	0.1	16.8	0.3	42.3		0.1
Potable Capital	10522	INDUSTRIAL COATINGS REPLACEMENT 18/19-DW	7/1/18	6/30/19	\$210,000	\$210,000	100.0																		
Recycled Capital	10523	INDUSTRIAL COATINGS REPLACEMENT 18/19-RW	7/1/18	6/30/19	\$220,000	\$220,000												100.0							
Sewer Capital	10524	INDUSTRIAL COATINGS REPLACEMENT 18/19-SS	7/1/18	6/30/19	\$110,000	\$110,000												100.0							
Potable Capital	07887	IRVINE LAKE SERVICE IMPROVEMENT	6/1/18	6/30/22	\$4,541	\$228,800		32.6	3.3	3.0	47.5	11.1	0.4	1.6	0.5										
Potable Capital	10541	LAGUNA CYN RD DW PIPE CORR REP	5/1/18	6/30/19	\$468,210	\$491,700	100.0																		
Recycled Capital	05156	LAGUNA CYN RD RW PIPE CORR REP	1/1/18	6/30/19	\$495,468	\$588,500												100.0							
Potable Capital	10096	LAKE FOREST NAKASE DW IMPROVEMENTS	6/1/19	7/31/22	\$4,567	\$437,000					100.0														
Potable Capital	05404	LAKE FOREST Z2-2RA PRV AT COMMERCENTRE	7/1/18	12/31/20	\$113,175	\$412,700									100.0										
Sewer Capital	07155	LAWRP SYSTEM REPLACEMENTS 18/19	7/1/18	6/30/19	\$138,600	\$138,600												100.0							
Potable Capital	10099	LF PORTOLA FROM RANCHO PKWY TO GLEN RANCH	6/1/19	6/30/22	\$1,200	\$972,000		32.6	3.3	3.0	47.5	11.1	0.4	1.6	0.5										
Sewer Capital	10095	LF SEWER AUTUMNWOOD/ELDERWOOD	8/1/17	12/31/19	\$100,869	\$719,000														100.0					
Recycled Capital	10551	LF ZNB EAST RES FLOATING COVER	2/1/18	12/31/18	\$355,000	\$390,000												100.0							
Sewer Capital	05520	MAINTENANCE ACCESS FOR FOUR SEWER REACHES	6/1/18	6/30/22	\$3,632	\$368,000												100.0							
Potable Capital	07896	MARSH O&M PLAN UPDATE	1/1/18	6/30/20	\$118,800	\$297,000		32.6	3.3	3.0	47.5	11.1	0.4	1.6	0.5										
Potable Capital	10537	MASON PARK DW PIPE REPLACEMENT	6/1/19	12/31/20	\$4,286	\$531,000	100.0																		

System	Project	Project Title	Start	End	FY18-19 Direct	Total Direct	Improvement Districts																		
							1100	1110	1120	1130	1250	1530	1540	1850	1880	2100	2220	2120	2130	2250	2400	2530	256	2850	2880
Potable Capital	07113	MECH-ELEC SYS REPLACEMENT 18/19-DW	7/1/18	6/30/19	\$950,000	\$950,000	100.0																		
Recycled Capital	07114	MECH-ELEC SYS REPLACEMENT 18/19-RW	7/1/18	6/30/19	\$660,000	\$660,000																			
Sewer Capital	07115	MECH-ELEC SYS REPLACEMENT 18/19-SS	7/1/18	6/30/19	\$550,000	\$550,000																			
Potable Capital	10629	METER REPLACEMENT 18/19-DW	7/1/18	6/30/19	\$2,646,290	\$2,646,290	100.0																		
Recycled Capital	10633	METER REPLACEMENT 18/19-RW	7/1/18	6/30/19	\$111,700	\$111,700																			
Potable Capital	07824	MICHELSON CAMPUS SECURITY-DW	1/3/17	6/30/19	\$33,878	\$99,000		32.6	3.3	3.0	47.5	11.1	0.4	1.6	0.5										
Recycled Capital	07826	MICHELSON CAMPUS SECURITY-RW	1/3/17	6/30/19	\$33,878	\$99,000																			
Sewer Capital	07825	MICHELSON CAMPUS SECURITY-SS	1/3/17	6/30/19	\$33,878	\$99,000																			
Sewer Capital	07097	MICHELSON SEWER FORCE MAIN RELINING	12/1/16	12/31/18	\$544,735	\$1,367,300																			
Potable Capital	10543	MIGRATE EMAIL TO MS CLOUD DW	5/1/19	12/31/20	\$9,350	\$93,500	100.0																		
Sewer Capital	10544	MIGRATE EMAIL TO MS CLOUD SS	5/1/19	12/31/20	\$9,350	\$93,500																			
Recycled Capital	04388	MULTI-ZONE BPS-ZONE A TO SYPHON	7/1/17	6/30/22	\$400	\$2,989,500																			
Recycled Capital	04457	MULTI-ZONE BPS-ZONE A-B	3/1/16	3/31/20	\$4,155,776	\$5,950,000																			
Recycled Capital	04400	MULTI-ZONE BPS-ZONE A-C	3/1/16	3/31/20	\$5,375,884	\$7,520,000																			
Sewer Capital	04286	MWRP BIOSOLIDS AND ENERGY RECOVERY FACILITIE	4/1/13	12/31/21	\$18,364,808	\$227,573,100																			
Sewer Capital	07900	MWRP DUMP STATION IMPROVEMENTS	6/1/18	12/31/20	\$128,115	\$291,500																			
Sewer Capital	07892	MWRP FILTER VALVES AND GATE REPLACEMENT	12/1/18	6/30/20	\$4,071	\$461,000																			
Sewer Capital	07890	MWRP HEADWORKS PLATFORMS	6/1/18	7/31/20	\$61,892	\$175,000																			
Sewer Capital	07891	MWRP HEADWORKS SCREENING AREA DIVERTER CH	6/1/18	6/30/20	\$94,023	\$180,500																			
Sewer Capital	04467	MWRP REPAIRS: ACT SLUDGE-2DARY TANKS-RAS/W	10/1/16	12/31/19	\$750,000	\$1,200,000																			
Sewer Capital	07116	MWRP SYS REPLACEMENTS 18/19	7/1/18	6/30/19	\$450,000	\$450,000																			
Sewer Capital	10535	MWRP TRANSFORMER T1 REPLACEMENT	1/1/19	12/31/20	\$65,000	\$543,000																			
Sewer Capital	05470	NEWPORT COAST SLS AND FM RECOATING	6/1/15	12/31/18	\$133,962	\$2,135,500																			
Sewer Capital	06400	NEWPORT COAST SLS IMPROVEMENTS	6/1/15	12/31/18	\$139,320	\$2,654,600																			
Recycled Capital	07807	NON-POTABLE WATER STUDIES 18/19	7/1/18	6/30/19	\$60,000	\$60,000																			
Recycled Capital	06216	NORTHWOOD ZONE B BPS DEMOLITION	6/1/17	1/31/21	\$76,700	\$539,000																			
Potable Capital	10548	NTS GENERAL SYSTEM MODIFICATIONS 18/19 NTS	7/1/18	6/30/19	\$121,000	\$121,000		32.6	3.3	3.0	47.5	11.1	0.4	1.6	0.5										
Potable Capital	06212	NTS INFILTRATION STUDY	6/1/18	6/30/19	\$61,054	\$64,900		32.6	3.3	3.0	47.5	11.1	0.4	1.6	0.5										
Potable Capital	07895	NTS MASTER PLAN UPDATE	1/1/18	6/30/19	\$66,667	\$100,000		32.6	3.3	3.0	47.5	11.1	0.4	1.6	0.5										
Sewer Capital	10502	OCSD CORF LONG TERM CAPITAL PROGRAM 2018 T	7/1/17	6/30/2050	\$5,421,125	\$154,476,000																			
Sewer Capital	10500	OCSD EQUITY LONG TERM CAPITAL PROGRAM 2018	7/1/17	6/30/2050	(\$364,375)	\$13,591,000																			
Sewer Capital	10594	OCSD SOLIDS LEASE LONG TERM CAPITAL PROGRAM	7/1/17	6/30/20	\$4,691,000	\$9,582,000																			
Potable Capital	10503	OCWD ANNEXATION LONG TERM CAPITAL PROGRA	7/1/17	1/30/2050	\$598,100	\$22,861,400		32.6	3.3	3.0	47.5	11.1	0.4	1.6	0.5										
Potable Capital	01336	OFFICE SPACE IMPROVEMENTS-DW	6/1/18	12/31/19	\$284,628	\$477,300	100.0																		
Recycled Capital	01257	OFFICE SPACE IMPROVEMENTS-RW	6/1/18	12/31/19	\$111,613	\$181,400																			
Sewer Capital	01549	OFFICE SPACE IMPROVEMENTS-SS	6/1/18	12/31/19	\$265,597	\$445,900																			

System	Project	Project Title	Start	End	FY18-19 Direct	Total Direct	Improvement Districts																				
							1100	1110	1120	1130	1250	1530	1540	1850	1880	2100	2220	2120	2130	2250	2400	2530	256	2850	2880		
Recycled Capital	07096	OSO RES STRAINER AND METER	4/1/18	12/31/19	\$218,524	\$375,100												14.6	10.7	4.1	51.0	7.7	10.4		1.5		
Recycled Capital	05919	PA1 NHB1 ORCHARD HILLS 16 ZC 6 ZC+	10/1/14	7/31/18	\$21,522	\$561,400																				100.0	
Potable Capital	07012	PA1 NHB3 ORCHARD HILLS 16 DW Z5	2/1/16	7/31/18	\$60,474	\$889,700																					
Recycled Capital	07013	PA1 NHB3 ORCHARD HILLS 6 8 10 12 RW ZC	2/1/16	7/31/18	\$27,569	\$475,200																				100.0	
Recycled Capital	07017	PA1 NHB3 ORCHARD HILLS 6 8 RW ZC+	2/1/16	7/31/18	\$14,229	\$250,800																				100.0	
Recycled Capital	07555	PA1 NHB3 ORCHARD HILLS F ST (RIDGE GATE TO E ST	8/1/16	7/31/18	\$13,437	\$167,800																				100.0	
Recycled Capital	01722	PA1 NHB4 ORCHARD HILLS RW	6/1/19	6/30/22	\$4,219	\$566,500																				100.0	
Sewer Capital	07173	PA1 PORTOLA PKWY SEWER REPLACEMENT	6/1/19	6/30/22	\$8,038	\$744,700																				100.0	
Potable Capital	04680	PA18S HIDDEN CANYON 12 DW	7/1/13	7/31/18	\$7,115	\$315,700																					
Recycled Capital	05168	PA18S HIDDEN CANYON 36 RW PIPELINE	3/1/13	7/31/18	\$60,474	\$2,208,200															14.6	10.7	4.1	51.0	7.7	10.4	1.5
Recycled Capital	04681	PA18S HIDDEN CANYON 6 -8 RW	7/1/13	7/31/18	\$7,115	\$315,700																				100.0	
Recycled Capital	03735	PA39 PH2 FACILITIES-RW	6/1/16	10/31/18	\$184,508	\$470,000																				100.0	
Recycled Capital	03734	PA40 TRAVELAND FACILITIES-RW	6/1/19	7/31/22	\$4,269	\$447,700																			21.0	79.0	
Sewer Capital	05788	PA51 ALTON PKWY SS RELOCATION 12 AND 18	8/1/14	7/31/18	\$40,981	\$1,232,300																				100.0	
Potable Capital	05816	PA51 ALTON-TECHNOLOGY TO MUIRLANDS 12 DW	9/1/14	7/31/18	\$5,817	\$177,100																					
Recycled Capital	05818	PA51 ALTON-TECHNOLOGY TO MUIRLANDS 16 RW	9/1/14	7/31/18	\$12,162	\$344,300																				87.4	12.6
Sewer Capital	05817	PA51 ALTON-TECHNOLOGY TO MUIRLANDS SS RELO	9/1/14	7/31/18	\$53,672	\$1,326,300																				100.0	
Potable Capital	05756	PA51 B ST FROM SOCIABLE TO IRVINE BLV 12 ZN 4	8/1/14	7/31/18	\$7,932	\$243,100																					
Recycled Capital	05757	PA51 B ST FROM SOCIABLE TO IRVINE BLV 16 ZN C	8/1/14	7/31/18	\$7,879	\$240,900																				99.6	0.4
Potable Capital	06304	PA51 BENCHMARK-BOSQUE TO 550-E/O BOSQUE 12	3/1/15	7/31/18	\$1,957	\$49,500																					
Recycled Capital	06306	PA51 BENCHMARK-BOSQUE TO 550-E/O BOSQUE 6 Z	3/1/15	7/31/18	\$1,957	\$49,500																				99.6	0.4
Potable Capital	04645	PA51 C ST FROM LQ ST TO O ST DW	7/1/13	7/31/18	\$5,191	\$211,700																					
Recycled Capital	04646	PA51 C ST FROM LQ ST TO O ST RW	7/1/13	7/31/18	\$5,989	\$266,200																				99.6	0.4
Sewer Capital	04653	PA51 C ST FROM TRABUCO RD TO LQ ST SS	7/1/13	7/31/18	\$8,440	\$403,700																				100.0	
Recycled Capital	05758	PA51 CADENCE-PUSAN TO CHINON 12_16RW	8/1/14	7/31/18	\$8,196	\$271,700																				87.4	12.6
Potable Capital	10343	PA51 D5 A ST 12 DW	4/1/18	12/31/19	\$418,062	\$989,000																				100.0	
Recycled Capital	10344	PA51 D5 A ST 12_10 RW	4/1/18	12/31/19	\$445,516	\$1,059,000																				100.0	
Recycled Capital	10255	PA51 D5 CADENCE S 10RW	4/1/18	12/31/19	\$57,656	\$138,000																				100.0	
Potable Capital	10254	PA51 D5 CADENCE S 12DW	4/1/18	12/31/19	\$58,566	\$138,000																				100.0	
Sewer Capital	10117	PA51 D5 CADENCE S FROM O TO CHINON 12SS	4/1/18	12/31/19	\$205,988	\$487,000																				100.0	
Recycled Capital	10024	PA51 D5 CHINON 16 RW, 12 RW and 10 RW ZONE C	4/1/18	6/30/20	\$100,623	\$457,000																				99.6	0.4
Sewer Capital	10023	PA51 D5 CHINON FROM SOUTH CADENCE TO CADEN	4/1/18	6/30/20	\$109,657	\$502,000																				100.0	
Potable Capital	10022	PA51 D5 CHINON FROM SOUTH CADENCE TO CADEN	4/1/18	6/30/20	\$80,792	\$392,000																				98.2	1.8
Potable Capital	06683	PA51 GP BENCHMARK AND MODJEKSA (DISTRICT 4)	8/1/15	7/31/18	\$6,409	\$150,700																				98.2	1.8
Recycled Capital	06684	PA51 GP BENCHMARK AND MODJESKA (DISTRICT 4)	8/1/15	7/31/18	\$40,480	\$971,300																				99.6	0.4
Potable Capital	06552	PA51 GP BENCHMARK AND PERSPECTIVE 12 DW Z4R	7/1/15	7/31/18	\$5,870	\$147,400																				98.2	1.8

							Improvement Districts																		
System	Project	Project Title	Start	End	FY18-19 Direct	Total Direct	1100	1110	1120	1130	1250	1530	1540	1850	1880	2100	2220	2120	2130	2250	2400	2530	256	2850	2880
Sewer Capital	06553	PA51 GP BENCHMARK AND PERSPECTIVE 16 SS	7/1/15	7/31/18	\$9,783	\$244,200												100.0							
Recycled Capital	06554	PA51 GP BENCHMARK AND PERSPECTIVE 6 RW ZC	7/1/15	7/31/18	\$5,217	\$129,800												99.6				0.4			
Sewer Capital	06331	PA51 GP CULTIVATE (BOSQUE TO 500 E/O BOSQUE)	3/1/15	7/31/18	\$5,726	\$220,000												100.0							
Recycled Capital	07169	PA51 GP DIST 7 Z ST AND A ST RW ZC	3/1/16	7/31/18	\$20,240	\$492,800												100.0							
Recycled Capital	06823	PA51 GP EPISODE (FROM FRAME TO PUSAN) 16 RW	11/1/15	7/31/18	\$13,975	\$323,400												99.6				0.4			
Recycled Capital	06514	PA51 GP GP-1 ST (MARINE TO GP-2 ST) 10 RW	6/1/15	7/31/18	\$21,927	\$536,800												87.4				12.6			
Recycled Capital	06732	PA51 GP MAGNET (FROM RIDGE V. TO BOSQUE) 6 R	9/1/15	7/31/18	\$8,205	\$206,800												87.4				12.6			
Potable Capital	06534	PA51 GP PUSAN (EPISODE TO IRVINE BLVD) 12 DW Z	6/1/15	7/31/18	\$1,630	\$44,000				98.2		1.8													
Recycled Capital	06535	PA51 GP PUSAN (EPISODE TO IRVINE BLVD) 12 RW Z	6/1/15	7/31/18	\$4,239	\$106,700												99.6				0.4			
Sewer Capital	10068	PA51 GP REACH A SS PHASE 2	9/1/17	3/31/19	\$515,011	\$652,000												67.0				33.0			
Recycled Capital	06595	PA51 GP TERRAPIN (TRABUCO TO CADENCE) 6 RW Z	7/1/15	7/31/18	\$6,942	\$180,400												87.4				12.6			
Potable Capital	06512	PA51 GP-1 ST (MARINE TO GP-2 ST) 12 DW	6/1/15	7/31/18	\$14,843	\$355,300				20.9		79.1													
Sewer Capital	06513	PA51 GP-1 ST (MARINE TO GP-2 ST) 12 SS	6/1/15	7/31/18	\$32,384	\$753,300												100.0							
Recycled Capital	06538	PA51 GP-2 ST (BOSQUE TO GP1 ST) 10 RW	6/1/15	7/31/18	\$47,226	\$1,169,400												87.4				12.6			
Potable Capital	06536	PA51 GP-2 ST (BOSQUE TO GP1 ST) 12 DW	6/1/15	7/31/18	\$18,891	\$531,300				20.9		79.1													
Sewer Capital	06537	PA51 GP-2 ST (BOSQUE TO GP1 ST) 12 SS	6/1/15	7/31/18	\$11,469	\$333,300												100.0							
Recycled Capital	07022	PA51 GP-2 ST (FROM GP-3 TO BOSQUE) 12 RWZC	2/1/16	7/31/18	\$8,967	\$180,400												99.6				0.4			
Potable Capital	06016	PA51 IRVINE BLVD-LAMBERT TO Z ST 12 DW	12/1/14	7/31/18	\$13,493	\$256,200				98.2		1.8													
Sewer Capital	06017	PA51 IRVINE BLVD-LAMBERT TO Z ST 16 SS	12/1/14	7/31/18	\$4,723	\$115,500												100.0							
Recycled Capital	06018	PA51 IRVINE BLVD-LAMBERT TO Z ST 20 RW	12/1/14	7/31/18	\$66,792	\$1,412,400												99.6				0.4			
Recycled Capital	05536	PA51 LQ ST FROM BOSQUE TO Z ST 12 RW	5/1/14	7/31/18	\$12,691	\$416,900												99.6				0.4			
Sewer Capital	05535	PA51 LQ ST FROM BOSQUE TO Z ST 12 -SS	5/1/14	7/31/18	\$41,024	\$1,075,300												100.0							
Recycled Capital	04649	PA51 LQ ST FROM O ST TO LY ST RW	7/1/13	7/31/18	\$1,597	\$78,100												93.5				6.5			
Sewer Capital	04648	PA51 LQ ST FROM O ST TO LY ST SS	7/1/13	7/31/18	\$5,191	\$255,200												61.5				38.5			
Potable Capital	04650	PA51 LY ST FROM LQ ST TO IRVINE BLVD DW	7/1/13	7/31/18	\$624	\$51,700				98.2		1.8													
Recycled Capital	04652	PA51 LY ST FROM LQ ST TO IRVINE BLVD RW	7/1/13	7/31/18	\$18,733	\$688,300												99.6				0.4			
Sewer Capital	04651	PA51 LY ST FROM LQ ST TO IRVINE BLVD SS	7/1/13	7/31/18	\$33,302	\$1,262,200												100.0							
Recycled Capital	10447	PA51 MARINE WAY AND BAKE 16RW	4/1/18	7/31/19	\$118,931	\$163,000												100.0							
Sewer Capital	10574	PA51 MARINE WAY AT OCTA 18 SS	4/1/18	6/30/20	\$217,652	\$970,000												100.0							
Potable Capital	06086	PA51 MARINE WAY FROM ALTON TO BARRANCA 12	1/1/15	12/31/18	\$89,162	\$438,700				20.9		79.1													
Potable Capital	04153	PA51 MARINE WAY ZN3 DW	11/1/12	7/31/18	\$12,578	\$420,200				20.9		79.1													
Recycled Capital	04147	PA51 MARINE WAY ZNB-RW	11/1/12	7/31/18	\$45,186	\$1,201,200												87.4				12.6			
Sewer Capital	06476	PA51 MARINE WAY. RIDGE VALLEY TO 3000 FT EAST	6/1/15	7/31/18	\$16,410	\$426,800																100.0			
Potable Capital	06208	PA51 MARINE WAY: SR133 TO RIDGE VALLEY 12 ZON	3/1/15	7/31/18	\$3,913	\$82,500				20.9		79.1													
Recycled Capital	06209	PA51 MARINE WAY: SR133 TO RIDGE VALLEY 6 ZONE	3/1/15	7/31/18	\$2,348	\$53,900												87.4				12.6			
Recycled Capital	06087	PA51 MARINE WAY-ALTON TO BARRANCA 16 RW ZN	1/1/15	12/31/18	\$95,916	\$481,600												87.4				12.6			

							Improvement Districts																		
System	Project	Project Title	Start	End	FY18-19 Direct	Total Direct	1100	1110	1120	1130	1250	1530	1540	1850	1880	2100	2220	2120	2130	2250	2400	2530	256	2850	2880
Sewer Capital	06048	PA51 MARINE WAY-ALTON TO BARRANCA 18 SS	1/1/15	7/31/18	\$26,246	\$874,500												100.0							
Sewer Capital	04614	PA51 REACH A SEWER IMPROVEMENTS	6/1/13	7/31/18	\$110,747	\$3,956,500												67.0				33.0			
Sewer Capital	10576	PA51 REACH B EAST 18 SS	4/1/18	6/30/20	\$417,101	\$2,125,000												100.0							
Potable Capital	04268	PA51 RIDGE VALLEY-MARINE WAY TO TRABUCO DW	1/1/13	7/31/18	\$12,072	\$486,200				20.9		79.1													
Recycled Capital	04278	PA51 RIDGE VALLEY-MARINE WAY TO TRABUCO RW	1/1/13	7/31/18	\$12,488	\$464,200												87.4					12.6		
Sewer Capital	04267	PA51 RIDGE VALLEY-MARINE WAY TO TRABUCO SS	1/1/13	7/31/18	\$38,363	\$1,493,800												22.9					77.1		
Potable Capital	07809	PA51 SAMP UPDATE-FUTURE AREAS-DW	7/1/17	12/31/18	\$20,000	\$60,000			100.0																
Sewer Capital	07810	PA51 SAMP UPDATE-FUTURE AREAS-SS	7/1/17	12/31/18	\$20,000	\$60,000												100.0							
Recycled Capital	10426	PA6 NB5BC B ST 6 RW PHASE 2	11/1/17	11/30/20	\$23,438	\$81,000																	100.0		
Recycled Capital	05243	PA6 NHB4B 6 RW ZONE D	2/1/14	7/31/18	\$16,702	\$526,900																	100.0		
Recycled Capital	06915	PA6 NHB5A 6 AND 8 RECYCLED WATER MAIN ZONE	12/1/15	7/31/18	\$16,867	\$402,600																	100.0		
Recycled Capital	05763	PA6 NHB5A RW ZONE D	8/1/14	7/31/18	\$3,818	\$132,000																	100.0		
Recycled Capital	10100	PA6 NHB5B5C 12 8 6 RW	12/1/17	6/30/20	\$55,263	\$640,000																	100.0		
Recycled Capital	04557	PA6 PHASE 1 NEIGHBORHOOD 3 ZONE C RW	6/1/13	7/31/18	\$9,100	\$315,700																	100.0		
Recycled Capital	01762	PA9B PHASE 5 GATEWAY PARK RW PIPES	6/1/19	6/30/22	\$7,990	\$506,100																	100.0		
Potable Capital	06214	PDF SODIUM HYPOCHLORITE STORAGE AND FEED SY	4/1/17	8/31/20	\$371,591	\$2,976,900		32.6	3.3	3.0	47.5	11.1	0.4	1.6	0.5										
Potable Capital	07682	PILOT SOUTH BASIN GROUNDWATER CLEANUP	6/1/18	12/31/19	\$84,298	\$1,127,500		32.6	3.3	3.0	47.5	11.1	0.4	1.6	0.5										
Potable Capital	07898	PLC REPLACEMENT-DW	7/1/17	12/31/21	\$132,121	\$440,000	100.0																		
Recycled Capital	07899	PLC REPLACEMENT-RW	7/1/17	12/31/21	\$132,121	\$440,000												100.0							
Potable Capital	07082	POTABLE REUSE ALTERNATIVES ANALYSIS DW	7/1/16	12/31/20	\$55,556	\$250,000		32.6	3.3	3.0	47.5	11.1	0.4	1.6	0.5										
Sewer Capital	07083	POTABLE REUSE ALTERNATIVES ANALYSIS SS	7/1/16	12/31/20	\$55,556	\$250,000												33.1	3.4	3.4	48.5	9.7	0.3	1.3	0.3
Sewer Capital	07130	RAISE MANHOLES TO GRADE 18/19 UNDER RA	7/1/18	6/30/19	\$346,500	\$346,500												100.0							
Potable Capital	07128	RAISE SYSTEM VALVES 18/19 UNDER RA-DW	7/1/18	6/30/19	\$577,500	\$577,500	100.0																		
Recycled Capital	07132	RAISE SYSTEM VALVES 18/19 UNDER RA-RW	7/1/18	6/30/19	\$138,600	\$138,600												100.0							
Recycled Capital	05476	RATTLESNAKE ZONE A BPS REBUILD	6/1/17	1/31/21	\$133,185	\$3,937,700												100.0							
Sewer Capital	07098	REBUILD SMH ON MAIN ST E/O MACARTHUR	1/1/17	12/31/19	\$110,014	\$178,200												100.0							
Potable Capital	07084	REPLACEMENT PLANNING DW	5/1/17	12/31/20	\$120,000	\$440,000	100.0																		
Recycled Capital	07085	REPLACEMENT PLANNING RW	5/1/17	12/31/20	\$120,000	\$440,000												100.0							
Potable Capital	07750	ROCKFIELD FLOW CONTROL FACILITY	7/1/17	6/30/19	\$86,815	\$187,100	100.0																		
Potable Capital	06023	ROSEDALE DROUGHT RELIEF PROJECT FACILITIES	1/13/15	6/30/19	\$744,026	\$9,872,500		32.6	3.3	3.0	47.5	11.1	0.4	1.6	0.5										
Recycled Capital	07159	RW CONVERSION IMPROVEMENTS FOR OFF-SITE 18/	7/1/18	6/30/19	\$753,500	\$753,500												100.0							
Recycled Capital	10436	RW RESERVOIRS FILTRATION STUDY	2/16/17	7/31/18	\$16,502	\$288,200												14.6	10.7	4.1	51.1	7.7	10.3		1.5
Recycled Capital	10063	SALT MANAGEMENT MODELING ON RECYCLED WAT	7/1/17	6/30/19	\$37,500	\$108,100												14.6	10.7	4.1	51.1	7.7	10.3		1.5
Recycled Capital	03780	SAN JOAQUIN RESERVOIR LINER REPLACEMENT	5/1/19	12/31/21	\$38,463	\$2,807,900												100.0							
Potable Capital	01414	SAND CYN 16" DW ANODE REP	6/1/18	6/30/22	\$4,865	\$243,100	100.0																		
Potable Capital	10101	SANTIAGO CANYON FLEMING STORAGE AND PUMP	1/1/18	12/31/22	\$663,876	\$9,001,000		100.0																	

System	Project	Project Title	Start	End	FY18-19 Direct	Total Direct	Improvement Districts																			
							1100	1110	1120	1130	1250	1530	1540	1850	1880	2100	2220	2120	2130	2250	2400	2530	256	2850	2880	
Potable Capital	10102	SANTIAGO CANYON PIPELINE REPLACEMENTS	6/1/19	6/30/21	\$16,308	\$1,286,000	100.0																			
Potable Capital	01398	SANTIAGO CYN PUMP STATION IMPROVEMENTS	6/1/18	6/30/21	\$287,980	\$6,613,000		32.6	3.3	3.0	47.5	11.1	0.4	1.6	0.5											
Recycled Capital	01813	SANTIAGO DAM SLOPED OUTLET	7/1/13	6/30/22	\$438,512	\$15,417,000											14.6	10.7	4.1	51.0	7.7	10.4		1.5		
Potable Capital	10061	SCE-IRWD WATER-ENERGY PILOT PHASE 2	6/1/18	12/31/19	\$239,684	\$379,500		32.6	3.3	3.0	47.5	11.1	0.4	1.6	0.5											
Recycled Capital	07099	SEAWATCH RW MAIN REPLACEMENT	12/1/16	12/31/18	\$441,828	\$1,360,500														100.0						
Recycled Capital	10071	SERRANO SUMMIT PHASE 2 RW	4/1/17	12/31/19	\$197,479	\$507,000																			100.0	
Potable Capital	07149	SERVICE LINE-VALVE-MAIN REPLACEMENT 18/19-D	7/1/18	6/30/19	\$1,793,900	\$1,793,900	100.0																			
Recycled Capital	07150	SERVICE LINE-VALVE-MAIN REPLACEMENT 18/19-R	7/1/18	6/30/19	\$642,100	\$642,100														100.0						
Sewer Capital	07151	SEWER LATERAL-MAIN REPLACEMENT 18/19	7/1/18	6/30/19	\$308,200	\$308,200														100.0						
Sewer Capital	07886	SEWER SIPHON REHABILITATION	6/1/18	6/30/22	\$4,541	\$440,000														100.0						
Sewer Capital	07885	SEWER SYSTEM CALCIUM REMOVAL	6/1/18	6/30/22	\$4,541	\$440,000														100.0						
Sewer Capital	07748	SGU DIVERSION TO SEWER	7/1/17	12/31/19	\$15,000	\$398,200												33.1	3.4	3.4	48.5		9.7	0.3	1.3	0.3
Sewer Capital	07452	SHII CANYON VIEW (AT JAMBOREE RD) 15 SS	7/1/16	7/31/22	\$5,688	\$259,600																		100.0		
Potable Capital	07376	SHII PH1 D ST (FROM SANTIAGO TO B ST) 12 DW	6/1/16	7/31/22	\$3,881	\$176,000							100.0													
Recycled Capital	07377	SHII PH1 D ST (FROM SANTIAGO TO B ST) 6 RW	6/1/16	7/31/22	\$3,609	\$162,800																		100.0		
Sewer Capital	07379	SHII PH2 A ST (FROM SANTIAGO TO B ST) 12 SS	4/1/18	7/31/22	\$7,250	\$205,000																		100.0		
Recycled Capital	07380	SHII PH2 A/B/F ST (TR 17995) 6 AND 8 RW	4/1/18	7/31/22	\$17,500	\$487,000																		100.0		
Potable Capital	07378	SHII PH2 B/F ST (FROM C ST TO Z5 RES) 12 DW	4/1/18	7/31/22	\$35,000	\$974,000							100.0													
Potable Capital	07451	SHII SANTIAGO CYN (FROM D ST TO A ST) 12 DW	7/1/16	7/31/22	\$16,154	\$1,126,900							100.0													
Recycled Capital	07453	SHII SANTIAGO CYN AND JAMBOREE 6 8 12 16 RW	7/1/16	7/31/22	\$31,491	\$2,228,300																		100.0		
Recycled Capital	07486	SHII SOUTH TR 16199 12 8 AND 6 RW	7/1/16	7/31/22	\$17,422	\$808,000																		100.0		
Sewer Capital	07484	SHII SOUTH TR 16199 15 AND 12 SS	7/1/16	7/31/22	\$14,201	\$668,000																		100.0		
Recycled Capital	05154	SJR SEISMIC EVALUATION (DSOD)	6/1/18	6/30/21	\$11,351	\$150,700												14.6	10.7	4.1	51.0	7.7	10.4		1.5	
Sewer Capital	10581	SOCWA ALISO CREEK OCEAN OUTFALL SEAL REPLACE	5/1/18	12/31/19	\$24,351	\$35,000														100.0						
Sewer Capital	03750	SOCWA ETM PROTECTION-TRAIL BRIDGE CROSSING (8/1/16	12/31/20	\$106,667	\$951,500														100.0						
Potable Capital	07897	SOUTH SAN DIEGO CREEK RUNOFF DIVERSION STUD	1/1/18	6/30/20	\$40,000	\$100,000		32.6	3.3	3.0	47.5	11.1	0.4	1.6	0.5											
Potable Capital	05499	STOCKDALE STORAGE FOR RECOVERY CAPACITY	1/1/19	6/30/20	\$439,358	\$1,590,800		32.6	3.3	3.0	47.5	11.1	0.4	1.6	0.5											
Recycled Capital	10580	SUNNYHILL RW PIPE REHAB	5/1/19	11/30/20	\$26,429	\$392,700														100.0						
Recycled Capital	03808	SYPHON RESERVOIR IMPROVEMENTS	6/1/15	8/31/22	\$2,056,267	\$75,000,000														14.6	10.7	4.1	51.0	7.7	10.4	1.5
Potable Capital	07888	TURTLE RIDGE PIPE REHAB-DW	7/1/17	6/30/19	\$206,391	\$309,000	100.0																			
Recycled Capital	07889	TURTLE RIDGE PIPE REHAB-RW	7/1/17	6/30/19	\$206,391	\$309,000														100.0						
Recycled Capital	04984	TUSTIN LEGACY ARMSTRONG ZONE A-WARNER ZON	11/1/13	7/31/18	\$19,565	\$773,300																		100.0		
Recycled Capital	07163	TUSTIN LEGACY BELL AVE (REDHILL TO ARMSTRONG)	3/1/16	7/31/18	\$18,553	\$362,800																		100.0		
Recycled Capital	07535	TUSTIN LEGACY FLIGHT DR 6 RW	8/1/16	7/31/18	\$12,228	\$270,000																		100.0		
Potable Capital	06765	TUSTIN LEGACY MOFFETT DR (AT PETERS CYN) 12 D	10/1/15	7/31/18	\$25,323	\$287,000				100.0																
Recycled Capital	06766	TUSTIN LEGACY MOFFETT DR (AT PETERS CYN) 16 R	10/1/15	7/31/18	\$33,715	\$375,000																		100.0		

Improvement Districts

System	Project	Project Title	Start	End	FY18-19 Direct	Total Direct	1100	1110	1120	1130	1250	1530	1540	1850	1880	2100	2220	2120	2130	2250	2400	2530	256	2850	2880	
Sewer Capital	01062	TUSTIN LEGACY MOFFETT FROM DOWNS RD TO JAM	7/1/18	6/30/19	\$217,000	\$217,000																			100.0	
Recycled Capital	10261	TUSTIN LEGACY MOFFETT LEGACY 12RW	6/1/17	6/30/20	\$170,867	\$643,000																			100.0	
Potable Capital	10260	TUSTIN LEGACY MOFFETT LEGACY 16_12DW	6/1/17	6/30/20	\$170,867	\$643,000				100.0																
Sewer Capital	06010	TUSTIN LEGACY PARK AVE FROM JAMBOREE TO VICT	12/1/14	7/31/18	\$2,115	\$64,900																			100.0	
Potable Capital	07140	TUSTIN LEGACY RED HILL WELL DRILLING AND EQUIP	6/1/19	12/31/21	\$36,754	\$4,559,800		32.6	3.3	3.0	47.5	11.1	0.4	1.6	0.5											
Potable Capital	04988	TUSTIN LEGACY WARNER FROM ARMSTRONG TO LE	11/1/13	7/31/18	\$4,991	\$150,500				100.0																
Recycled Capital	04989	TUSTIN LEGACY WARNER FROM ARMSTRONG TO LE	11/1/13	7/31/18	\$8,784	\$332,700																			100.0	
Potable Capital	07170	UNIVERSITY DR WIDENING APPURTENANCE RELOC-D	4/1/16	12/31/20	\$102,587	\$248,000	75.0	25.0																		
Recycled Capital	07172	UNIVERSITY DR WIDENING APPURTENANCE RELOC-R	4/1/16	12/31/20	\$102,587	\$248,000											25.0	75.0								
Sewer Capital	07171	UNIVERSITY DR WIDENING APPURTENANCE RELOC-S	4/1/16	12/31/20	\$102,587	\$248,000											50.0	50.0								
Sewer Capital	07112	VACTOR ACCESS TO SMH ON SO IRVINE INTERCEPTO	9/1/16	12/31/18	\$123,295	\$383,000											100.0									
Potable Capital	10542	VAULT LID REPLACEMENT-18/19 DW	6/1/18	6/30/19	\$399,200	\$402,200	100.0																			
Recycled Capital	10549	VAULT LID REPLACEMENT-18/19 RW	6/1/18	6/30/19	\$352,143	\$355,000											100.0									
Sewer Capital	10550	VAULT LID REPLACEMENT-18/19 SS	6/1/18	6/30/19	\$177,571	\$179,000											100.0									
Potable Capital	06121	VAULT LID REPLACEMENT-DW	1/1/18	12/31/18	\$317,821	\$397,700	100.0																			
Recycled Capital	06123	VAULT LID REPLACEMENT-RW	1/1/18	12/31/18	\$143,088	\$195,300											100.0									
Sewer Capital	06122	VAULT LID REPLACEMENT-SS	1/1/18	12/31/19	\$62,876	\$96,300											100.0									
Potable Capital	07154	WATER AND ENERGY PLANNING STUDIES DW 18/19	7/1/18	6/30/19	\$231,500	\$231,500		32.6	3.3	3.0	47.5	11.1	0.4	1.6	0.5											
Recycled Capital	07141	WATER RECYCLING TRT PLANT MSTR PLAN UPDATE-	4/1/17	9/30/19	\$191,149	\$454,300											14.6	10.7	4.1	51.0	7.7	10.4		1.5		
Sewer Capital	05427	WATER RECYCLING TRT PLANT MSTR PLAN UPDATE-	4/1/17	9/30/19	\$387,663	\$921,300											33.1	3.4	3.4	48.5		9.7	0.3	1.3	0.3	
Potable Capital	07161	WATER RELIABILITY PLANNING 18/19	7/1/18	6/30/19	\$137,500	\$137,500		32.6	3.3	3.0	47.5	11.1	0.4	1.6	0.5											
Potable Capital	07160	WATER SUPPLY RELIABILITY AGREEMENTS 18/20	7/1/18	6/30/20	\$220,000	\$440,000		32.6	3.3	3.0	47.5	11.1	0.4	1.6	0.5											
Potable Capital	07120	WELL MAINTENANCE AND REHABILITATION 18/19	7/1/18	6/30/19	\$450,000	\$450,000	100.0																			
Potable Capital	05473	WELLS 11 AND 15 SURGE TANK REPLACEMENT	11/1/14	12/31/18	\$193,113	\$3,626,200	100.0																			
Potable Capital	01402	WELLS 51/52/53 TREATMENT ALTERNATIVES STUDY	6/15/18	12/31/19	\$86,180	\$133,100		32.6	3.3	3.0	47.5	11.1	0.4	1.6	0.5											
Potable Capital	06169	ZN 8-9 PIPELINE ANODE BED LEAD WIRE REPLACEME	6/1/18	6/30/22	\$8,108	\$315,200	100.0																			
Potable Capital	06401	ZONE 1 RESERVOIR NO. 2	4/1/16	12/31/19	\$6,210,209	\$12,626,300		32.6	3.3	3.0	47.5	11.1	0.4	1.6	0.5											
Totals					94,822,459	779,202,740																				4/18/2018

Irvine Ranch Water District
Fiscal Year 2018-19 Capital Budget
Section 2 - Flagged Projects

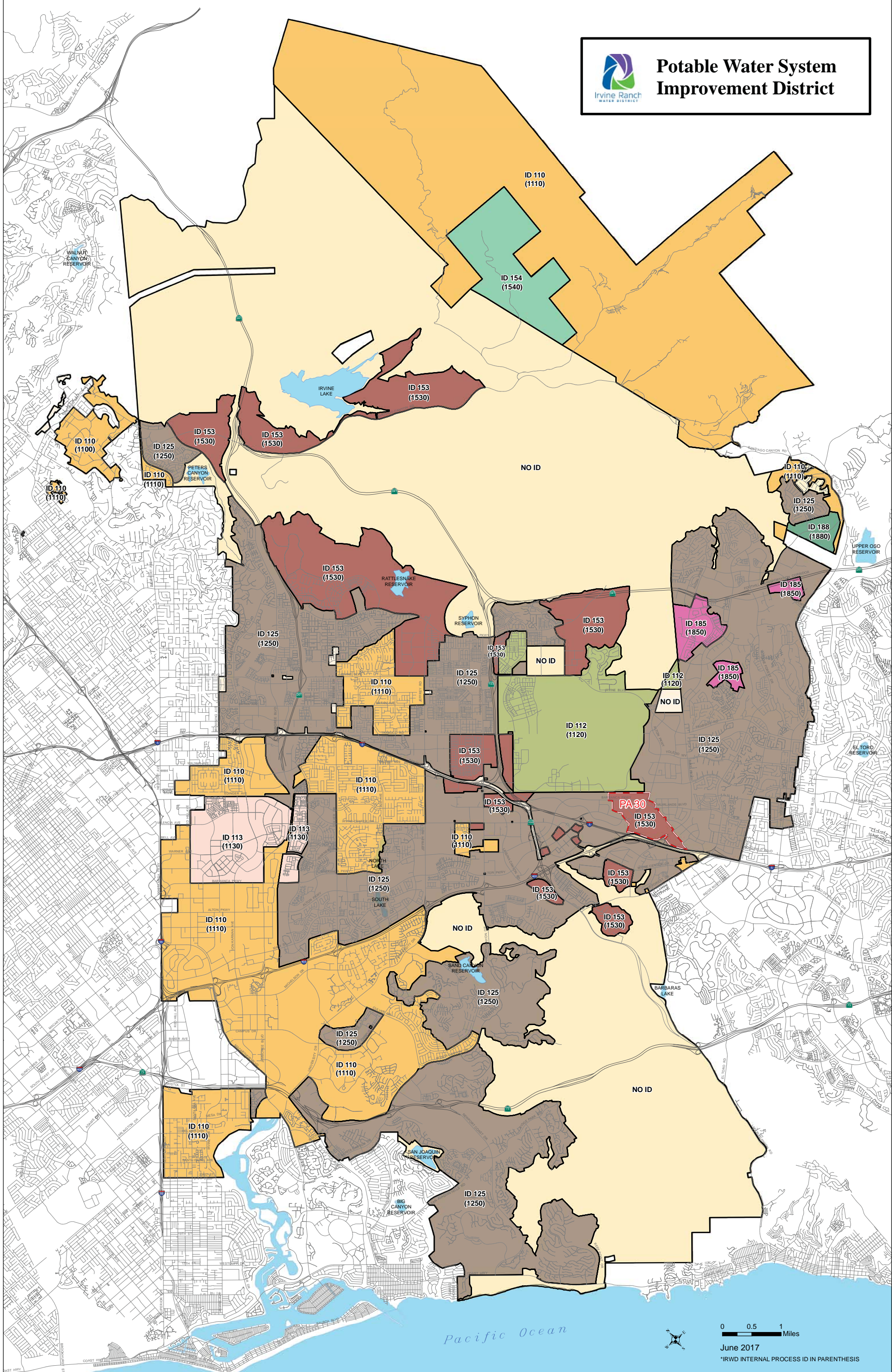
Project Number	Project Title	Flagged Project	Project Status
01402	WELLS 51/52/53 TREATMENT ALTERNATIVES STUDY	Yes	Board Approved
03808	SYPHON RESERVOIR IMPROVEMENTS	Yes	Active
07140	TUSTIN LEGACY RED HILL WELL DRILLING AND EQUIPPING	Yes	Board Approved

Irvine Ranch Water District
 Fiscal Year 2018-19 Capital Budget
 Section 3 - Projected FY 2018-19 Expenditures by Fiscal Year Expenditure Groups

FY Exp Category	FY18-19 Direct	Total Direct	FY Replacement	FY Developed	FY Developing
Replacement & Rehabilitation	\$18,398,253	\$45,774,190	\$17,652,782	\$627,745	\$117,727
Solids Handling	\$18,364,808	\$227,573,100	\$8,355,988	\$8,558,001	\$1,450,820
Regional Development	\$11,026,497	\$16,137,600	\$569,341	\$345,307	\$10,111,848
OCSD - CORF - Solids Lease	\$9,747,750	\$177,649,000	\$3,941,158	\$4,743,764	\$1,062,829
Zone 1 Reservoir No. 2	\$6,210,209	\$12,626,300	\$0	\$4,974,378	\$1,235,832
Operational	\$5,432,011	\$45,384,500	\$555,094	\$4,034,105	\$842,812
Development - PA51	\$3,877,186	\$36,038,500	\$0	\$0	\$3,877,186
ILP Zone C+ Conversion	\$3,668,707	\$25,373,600	\$32,040	\$989,606	\$2,647,060
Well Rehabilitation	\$3,201,939	\$6,610,000	\$3,201,939	\$0	\$0
General Plant	\$2,694,250	\$2,694,250	\$1,902,141	\$619,678	\$172,432
Nonpotable Storage	\$2,073,169	\$78,277,700	\$0	\$1,519,649	\$553,520
Planning	\$1,914,077	\$3,365,100	\$240,000	\$1,281,937	\$392,140
Water Resources	\$1,789,417	\$7,542,400	\$753,500	\$829,769	\$206,147
Water Banking	\$1,540,883	\$12,040,800	\$0	\$1,234,248	\$306,636
Replacement-Business Software	\$1,397,041	\$8,710,200	\$419,850	\$790,059	\$187,132
Development - Tustin Legacy	\$684,010	\$4,119,200	\$0	\$0	\$684,010
OCWD Annexation	\$598,100	\$22,861,400	\$0	\$479,078	\$119,022
Sewage Treatment	\$578,811	\$1,375,600	\$0	\$456,445	\$122,367
Property Management	\$533,147	\$24,969,300	\$533,147	\$0	\$0
Development - Lake Forest	\$417,290	\$3,047,700	\$0	\$106,397	\$310,892
Development - PA39	\$184,508	\$470,000	\$0	\$0	\$184,508
Development - SHII	\$152,195	\$7,095,600	\$0	\$0	\$152,195
Development - PA1	\$135,260	\$3,405,300	\$0	\$0	\$135,260
Development - PA6	\$115,979	\$2,268,000	\$0	\$0	\$115,979
Development - PA18	\$74,704	\$2,839,600	\$0	\$44,328	\$30,376
Development - PA9B	\$7,990	\$506,100	\$0	\$0	\$7,990
Development - PA40	\$4,269	\$447,700	\$0	\$0	\$4,269
	\$94,822,459	\$779,202,740	\$38,156,979	\$31,634,492	\$25,030,988



Potable Water System Improvement District



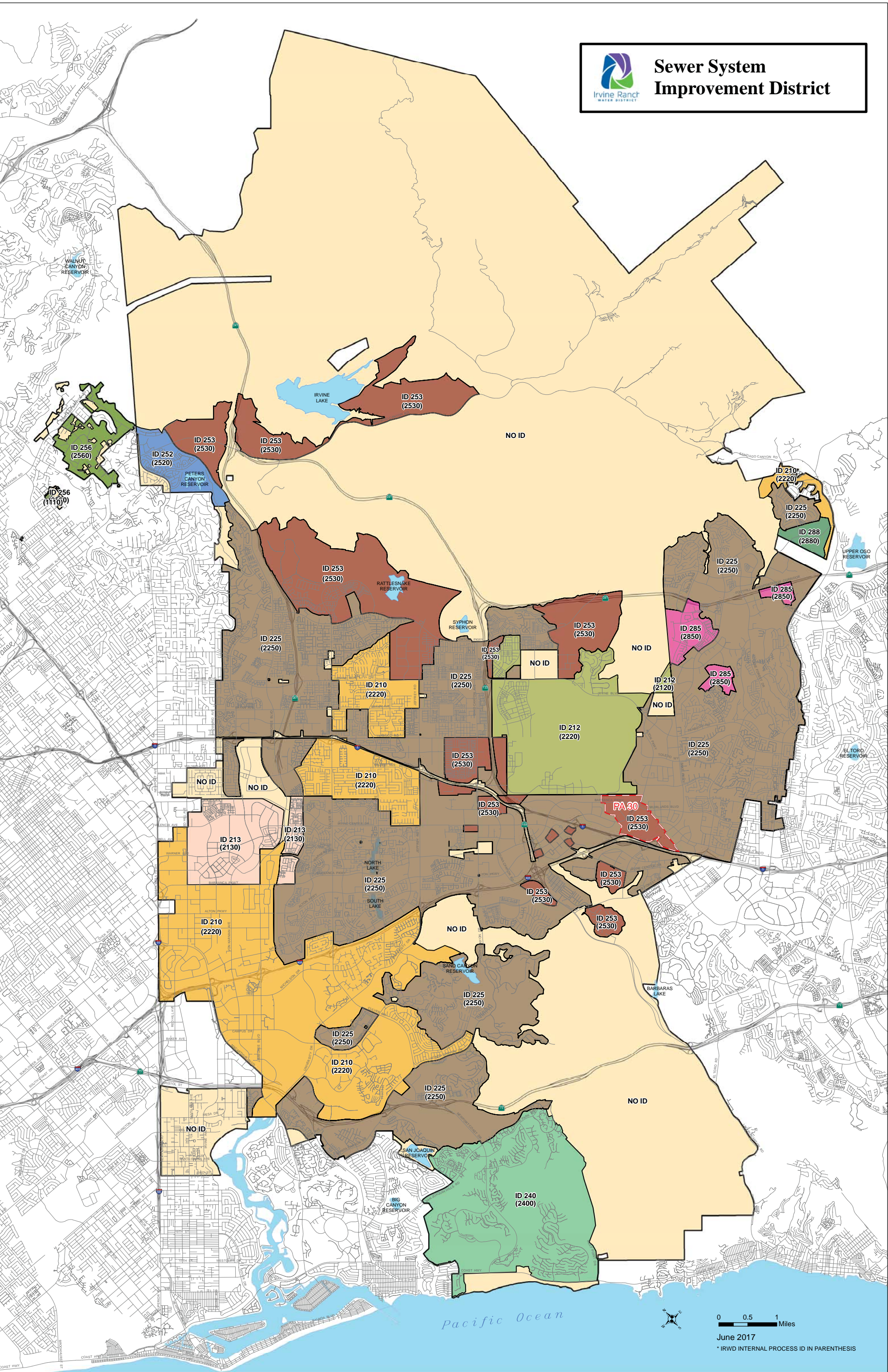
0 0.5 1 Miles

June 2017

*IRWD INTERNAL PROCESS ID IN PARENTHESIS



Sewer System Improvement District



0 0.5 1 Miles

June 2017

* IRWD INTERNAL PROCESS ID IN PARENTHESIS