

PUBLIC HEARING:

*Evaluating a Change in the Election Process for the
Irvine Ranch Water District Board of Directors and
Establishing Division Boundaries*

June 4, 2018



Presentation Agenda

- Review of Two Types of Election Systems
- Brief Summary of the California Voting Rights Act
- Review of the Process for Evaluating a Change to By-Division Elections
- Overview of How Division Boundaries are Drawn and Factors Which May be Considered

Two Types of Election Systems

At-Large Elections

By-Division Elections

Allows for voters from IRWD's entire service area to elect each of the five members of the IRWD Board of Directors.

Pursuant to Water Code section 35180, IRWD currently uses an at-large method to elect the members of its Board of Directors.

N.B. The term "service area" is being used to describe the IRWD political boundary.

Two Types of Election Systems

At-Large Elections

By-Division Elections

Divides the IRWD service area into 5 separate divisions and allows the voters from each division, as opposed to voters from the entire service area, to elect a member of the board of directors.

In a by-division method of election, the elected individual serves as the division's representative on the board and must reside in that division.

California Voting Rights Act

- In 2002, Governor Grey Davis signed the CVRA into law.
- The CVRA states that an at-large method of election may not be used to elect local governing boards if it “impairs the ability of a protected class to elect candidates of its choice or its ability to influence the outcome of an election.” (Elections Code §14027)
- As a result, many local governments have voluntarily moved to a by-division method of election because it is the only election method not vulnerable to a challenge under the CVRA.



Process for Evaluating a Change of Election Method and Establishing Division Boundaries

- The IRWD Board of Directors adopted a resolution of “Intent to Initiate the Process of Establishing Divisions and Elections by Divisions” on April 2, 2018.
- As part of its evaluation process, the Board will hold two public hearings to invite and solicit public comment on the proposed move to by-division elections and the composition of divisions prior to the drawing of maps.
- After consideration of the input provided, the Board will discuss the criteria to be used in evaluating proposed maps.
- Following the two public hearings, there will be an additional public comment period during which the public will be invited to submit additional comments and conceptual maps.

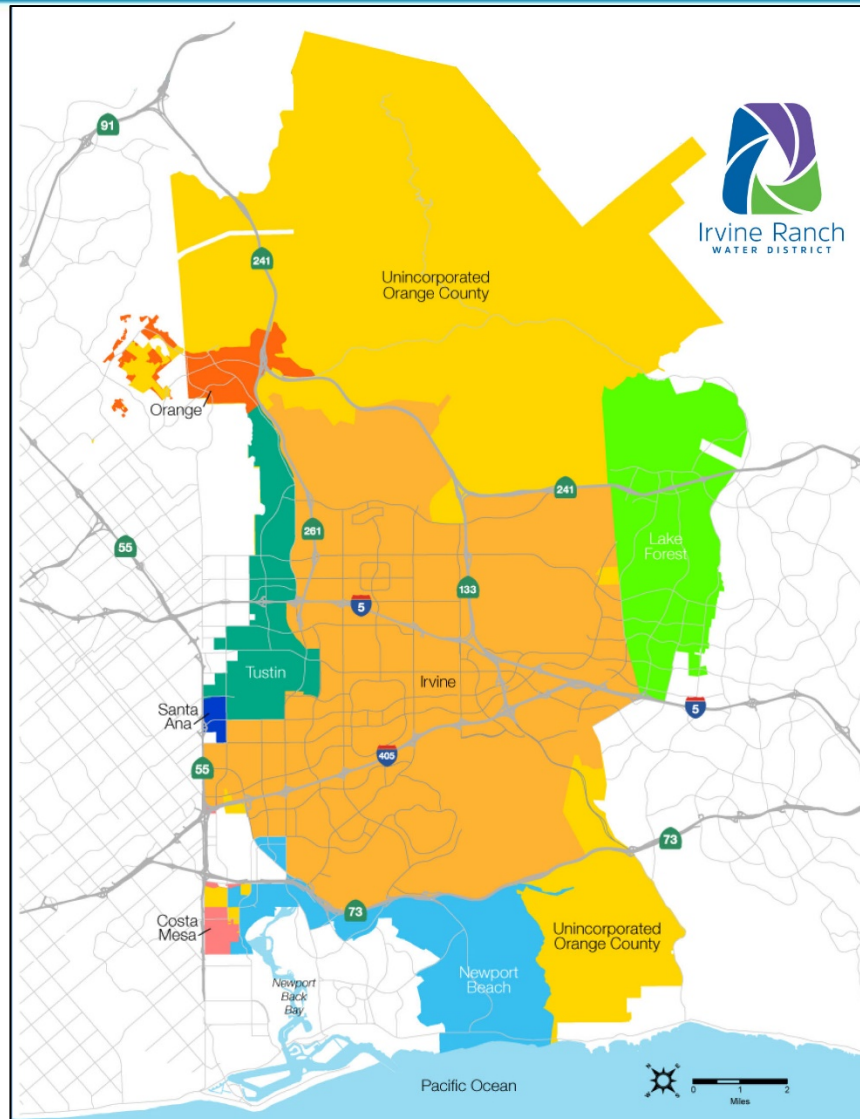
Process for Evaluating a Change of Election Method and Establishing Division Boundaries

- Submitted comments and conceptual maps may be considered and may help inform the drawing of any proposed maps.
- IRWD will publish proposed map(s) at least seven days before holding at least two more public hearings to invite and solicit public comment on the proposed division maps.
- Finally, the Board will hold an additional public hearing to consider adoption of a division map and to determine which divisions are up for election first.

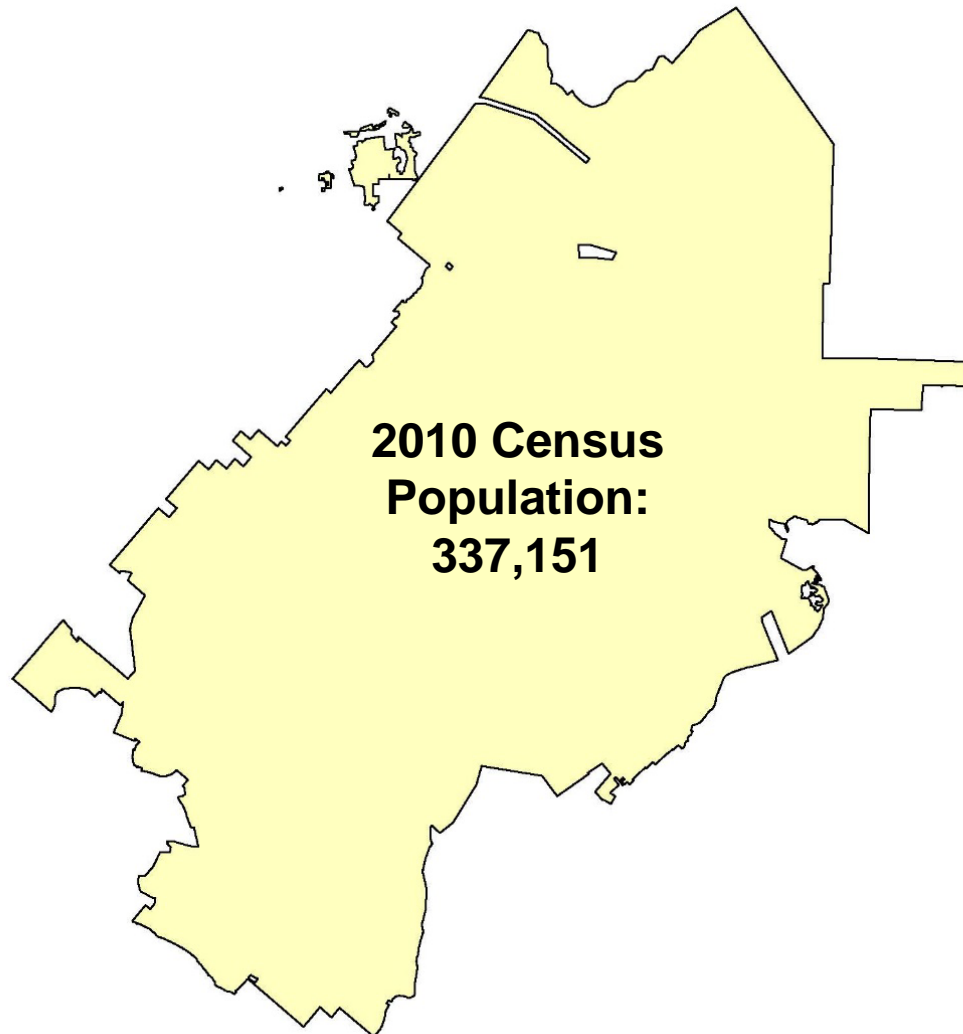
How Division Boundaries Are Drawn

- When drawing division boundaries, primary consideration is given to the total population of IRWD's service area.
 - Primary goal is as nearly equal population in each division as is possible.
 - Primary data used in drawing division boundaries is 2010 Decennial Census data.
- Additional data that may be considered:
 - Citizen Voting Age Population data
- Community characteristics may also be considered.

Map of IRWD's Service Area

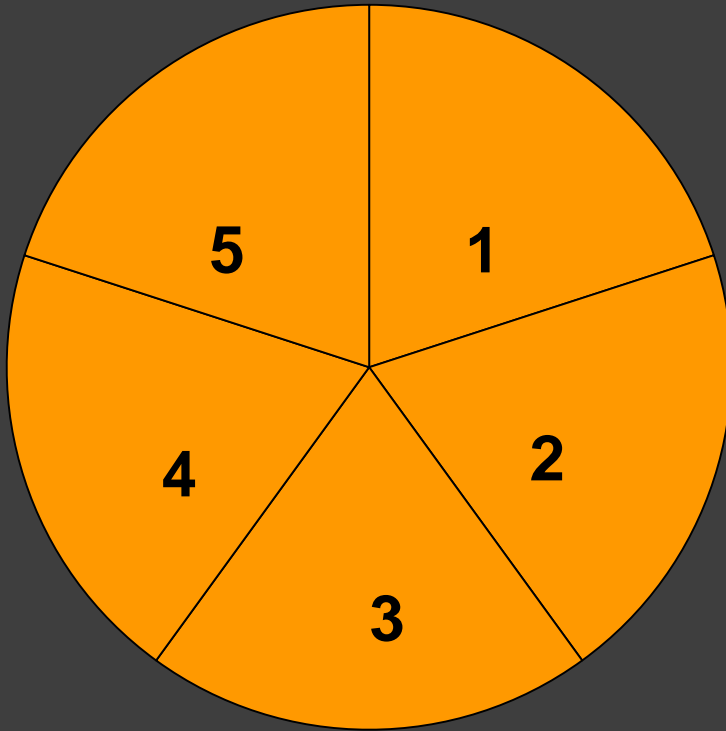


IRWD 2010 Population



IRWD's 2010 Decennial Census Population

337,151 / 5 Divisions = 67,430



Target Division Population= 67,430

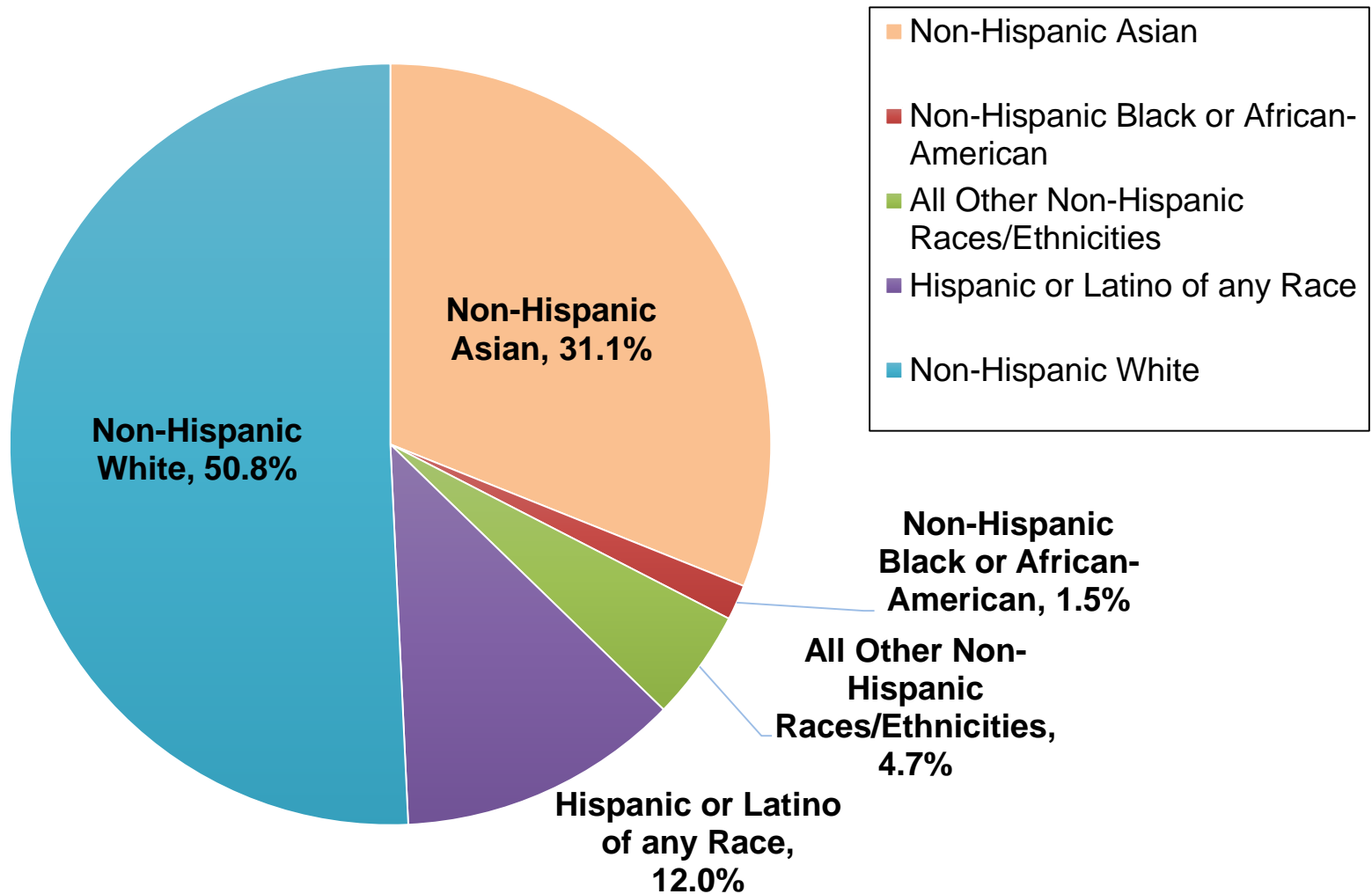
The divisions shall be nearly equal in population based on the population of the last decennial census.

This is required by:

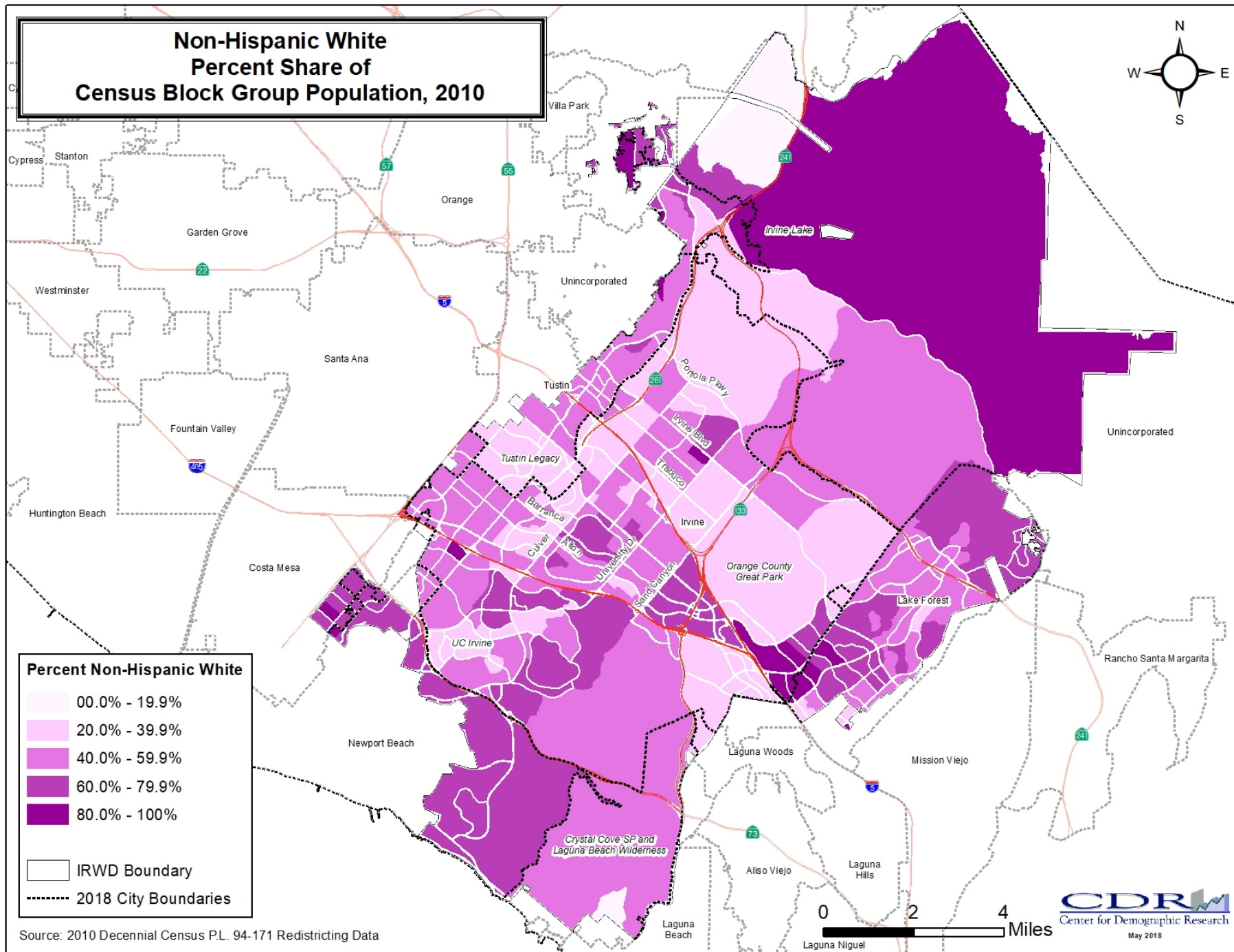
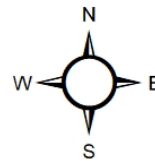
- U.S. Constitution
- Federal Voting Rights Act
- California Law

The population difference between the most and least populous divisions may not exceed 10%.

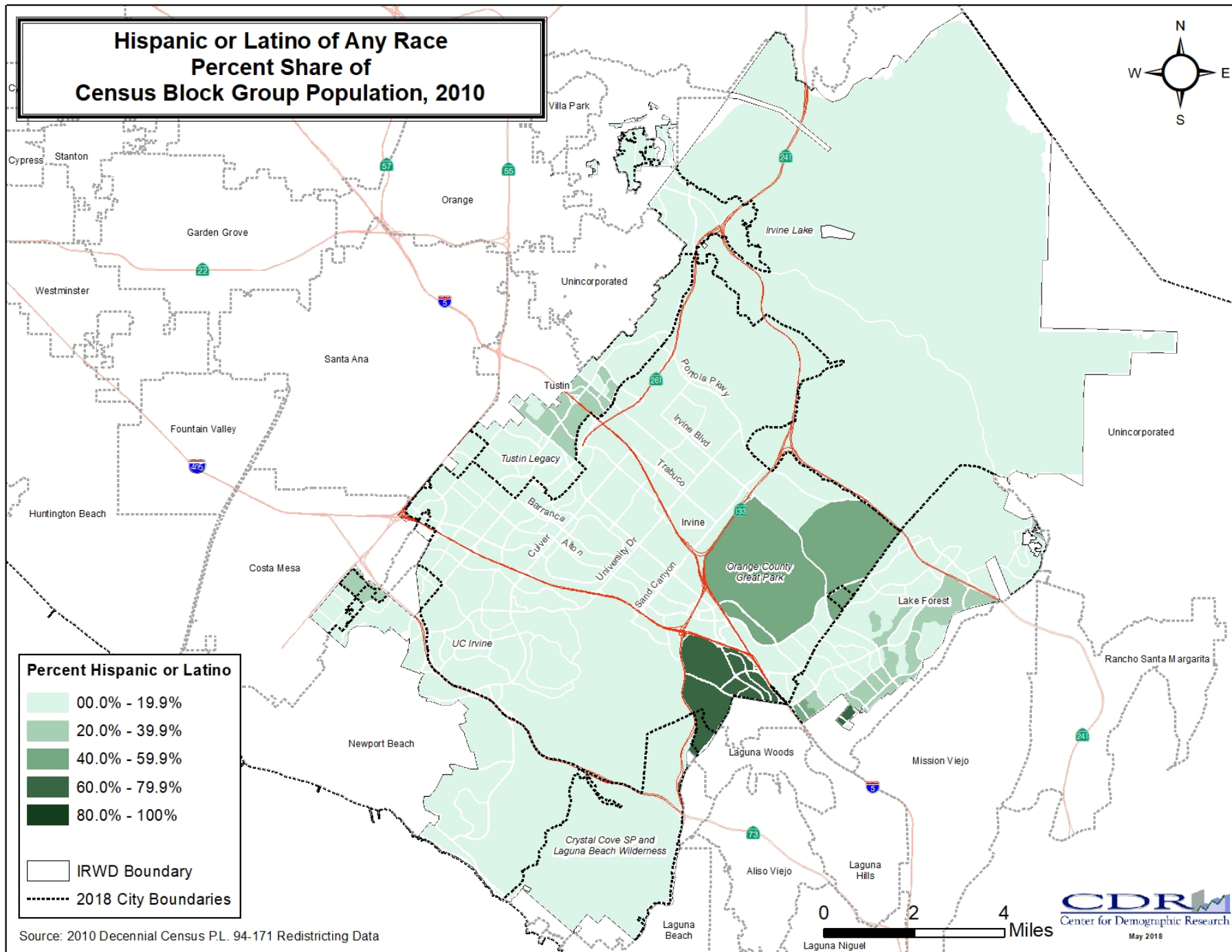
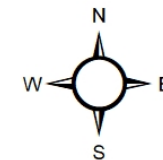
IRWD 2010 Decennial Census Data



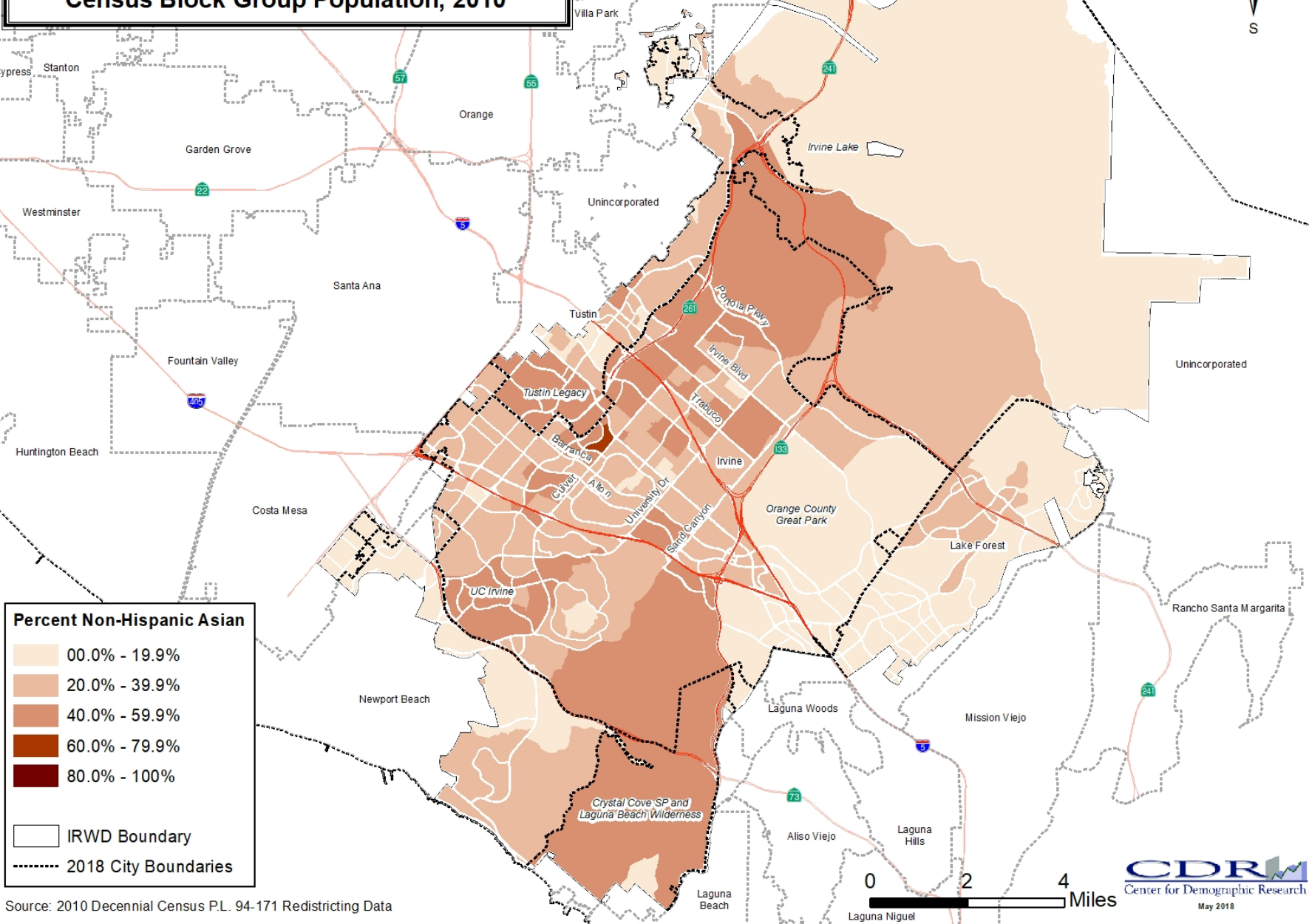
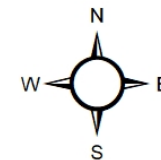
Non-Hispanic White Percent Share of Census Block Group Population, 2010



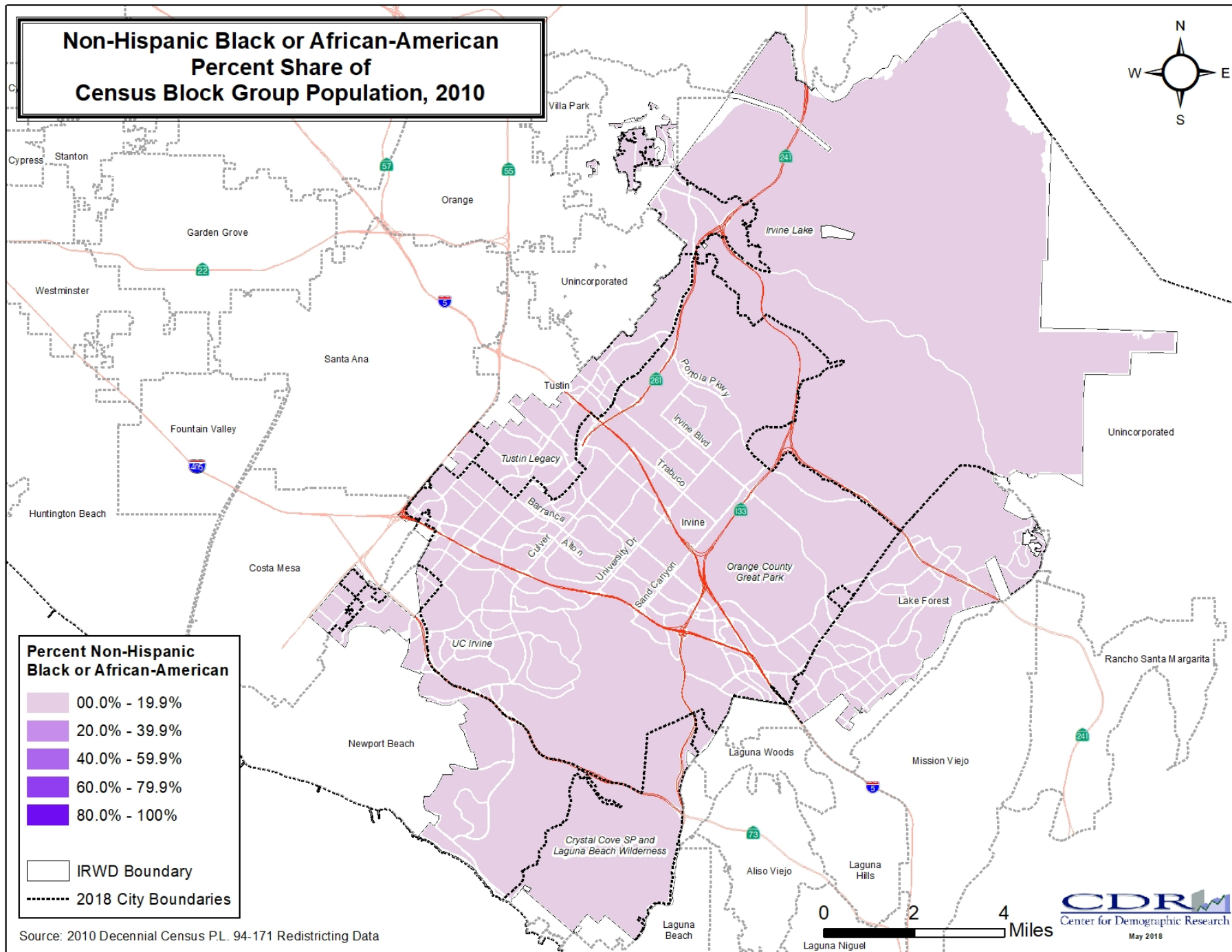
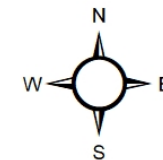
Hispanic or Latino of Any Race Percent Share of Census Block Group Population, 2010



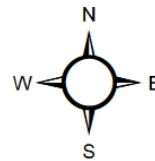
Non-Hispanic Asian Percent Share of Census Block Group Population, 2010



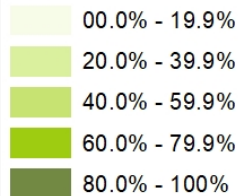
Non-Hispanic Black or African-American Percent Share of Census Block Group Population, 2010



All Other Non-Hispanic Races Percent Share of Census Block Group Population, 2010

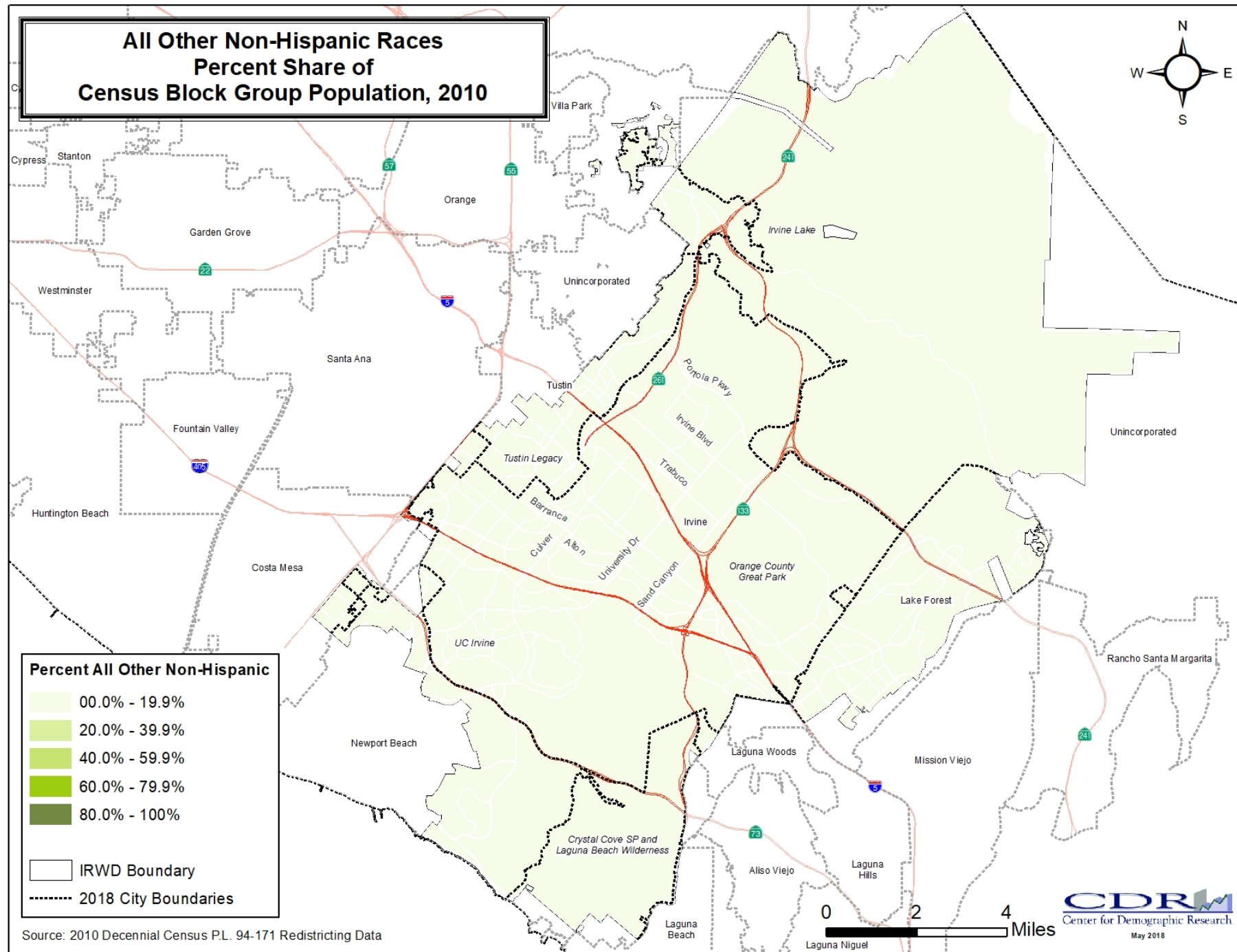


Percent All Other Non-Hispanic



IRWD Boundary
 2018 City Boundaries

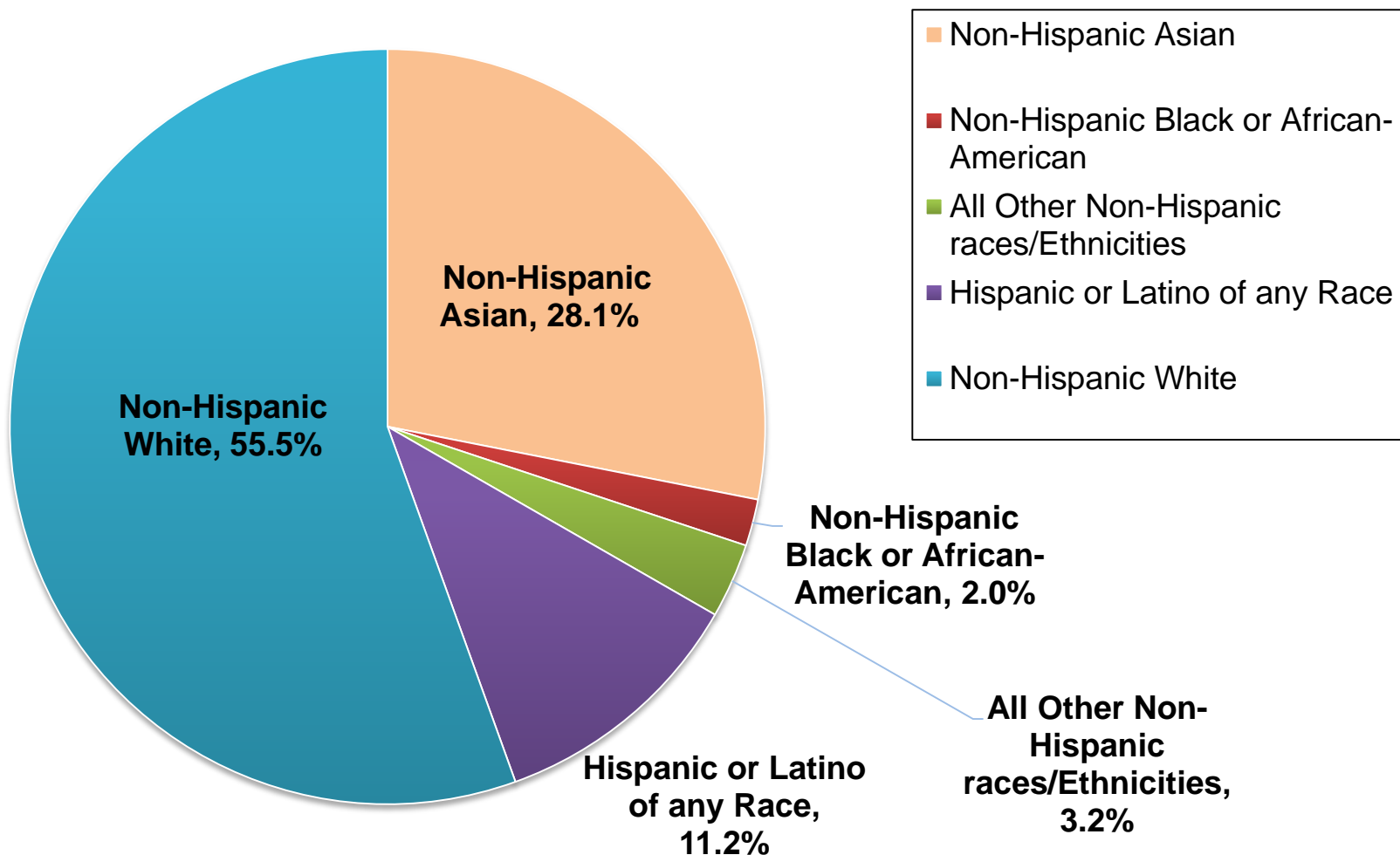
Source: 2010 Decennial Census P.L. 94-171 Redistricting Data



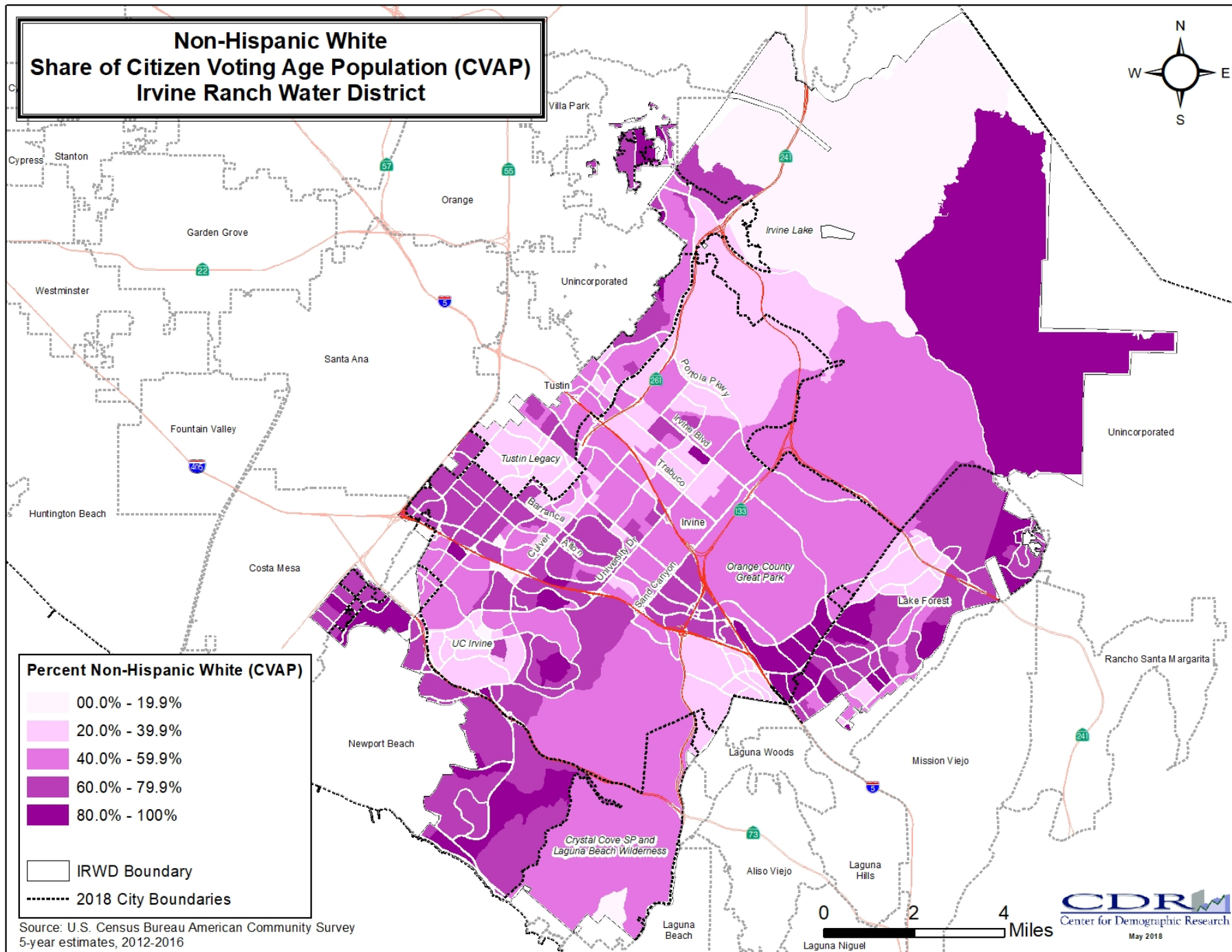
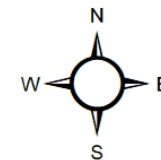
Citizen Voting Age Population (CVAP)

- Calculated from U.S. Census Bureau's American Community Survey (ACS)
 - Monthly household sample survey across the nation
- 5-Year Estimates
 - Data Collected over five-year period
 - Will not match counts from 2010 Census
- Census Block Group level
- Estimated population by race/ethnicity of U.S. citizens age 18 and over
 - Population eligible to vote
- Available on U.S. Census Bureau website
 - <https://www.census.gov/programs-surveys/decennial-census/about/voting-rights/cvap.html>

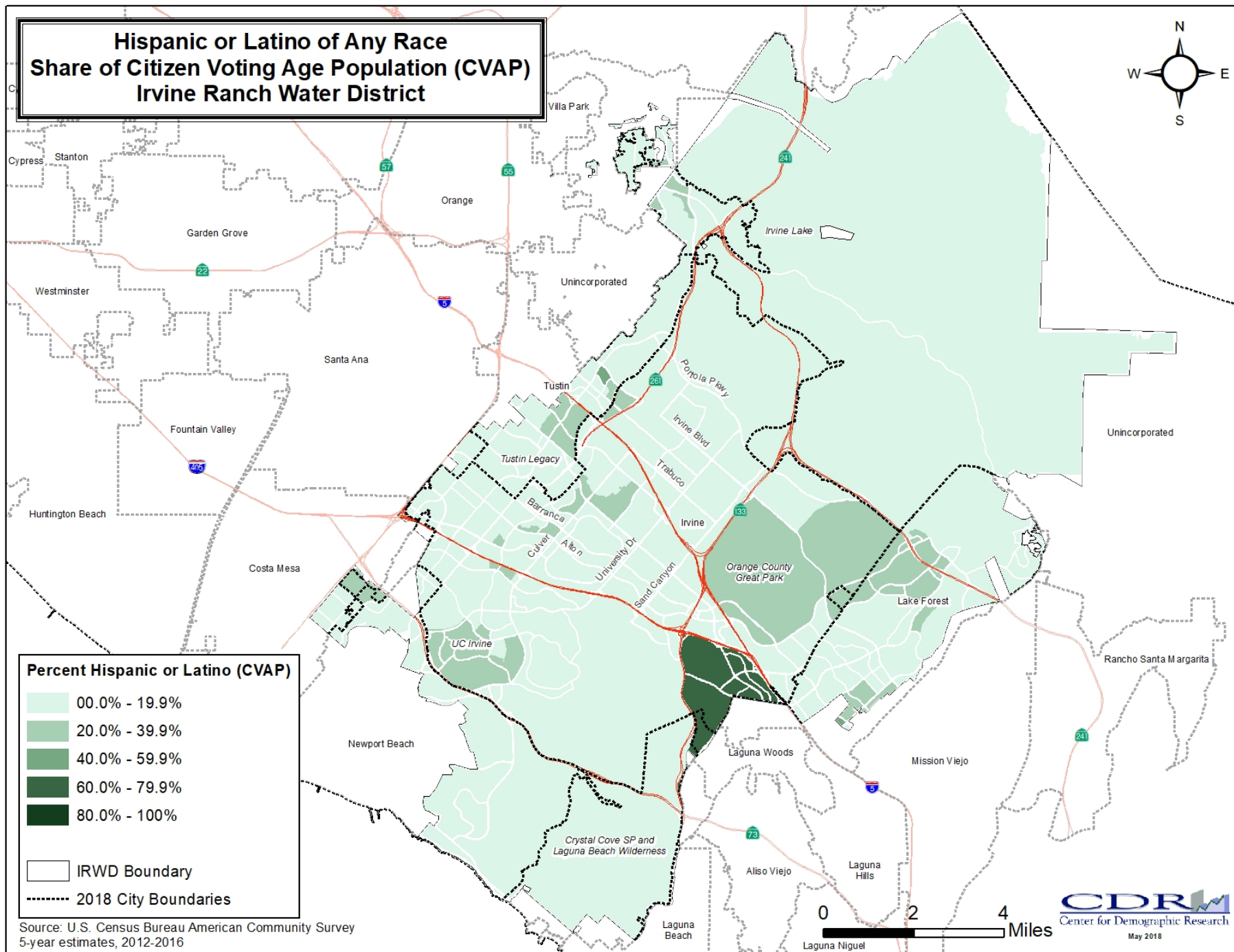
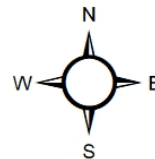
IRWD 2016 Citizen Voting Age Population (CVAP) Data



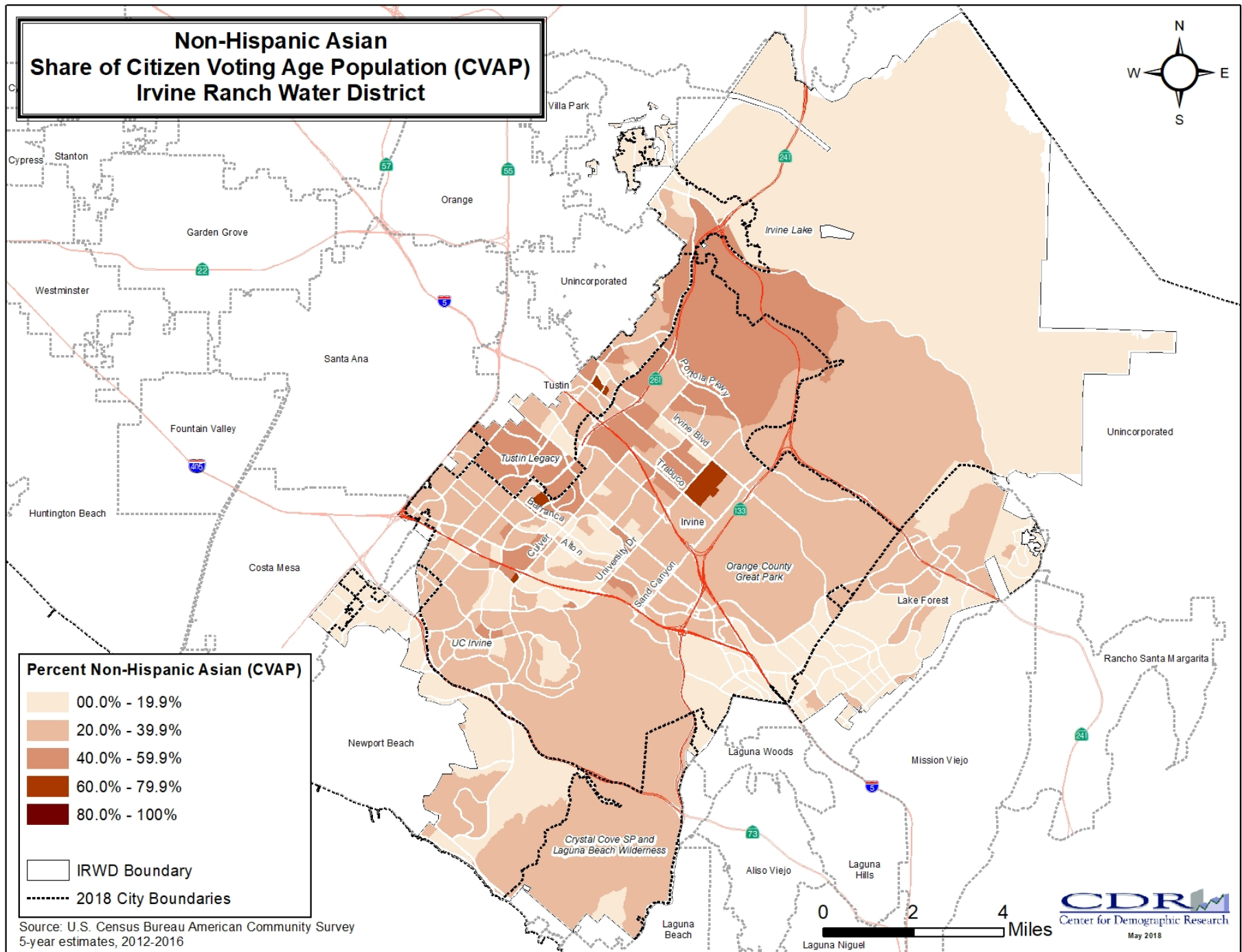
Non-Hispanic White Share of Citizen Voting Age Population (CVAP) Irvine Ranch Water District



Hispanic or Latino of Any Race Share of Citizen Voting Age Population (CVAP) Irvine Ranch Water District



**Non-Hispanic Asian
Share of Citizen Voting Age Population (CVAP)
Irvine Ranch Water District**



Source: U.S. Census Bureau American Community Survey
5-year estimates, 2012-2016

CDR
Center for Demographic Research
May 2018

Other Factors Considered in Drawing Divisions

- The Federal Voting Rights Act
- Consideration may also be given to community characteristics such as:
 - Topography
 - Geography
 - Cohesiveness, contiguity, integrity, and compactness of territory
 - Communities of interest

Questions & Public Comment

