

April 8, 2019

Prepared and

submitted by: C. Compton

Approved by: Paul A. Cook

## PUBLIC HEARING

### EVALUATING A CHANGE IN THE ELECTIONS PROCESS FOR THE IRVINE RANCH WATER DISTRICT BOARD OF DIRECTORS AND ESTABLISHING DIVISION BOUNDARIES

#### SUMMARY:

Pursuant to Water Code section 35180, IRWD uses an at-large method to elect the members of its Board of Directors. The at-large method allows for voters from the entire service area to elect each of the five members of the Board of Directors. The California Voting Rights Act favors a by-division method of election instead of an at-large method of election for electing members of local government governing bodies. A by-division method divides a service area into separate divisions and allows the voters from each division, as opposed to voters from the entire service area, to elect a member of the Board of Directors. In a by-division method of election, the elected individual serves as the division's representative on the board and must reside in that division.

Since 2017, Elections Code section 10650 has authorized special districts such as IRWD to move from an at-large method of election to a by-division method of election in furtherance of the purposes of the California Voting Rights Act. Elections Code section 10010 governs the process for evaluating and transitioning to a by-division method of election. The first step in initiating the process is the adoption of a resolution of "Intent to Initiate the Process of Establishing Divisions and Elections by Divisions." The IRWD Board of Directors adopted a resolution of "Intent to Initiate the Process of Establishing Divisions and Elections by Divisions" on April 2, 2018. The next steps involved a series of public hearings.

Pursuant to Elections Code section 10010, an additional public hearing, the fourth public hearing since the drafting and publication of draft maps, is now being held on April 8, 2019, after the drawing of draft maps. The first hearing after the drawing of draft maps was held on December 10, 2018. The second hearing after the drawing of draft maps was held on January 14, 2019, while a third hearing after the drawing of draft maps was held on March 11, 2019. The purpose of these hearings, and the current hearing, is to invite and solicit public comments on the draft division maps, which have been published by the District on its website, and the potential sequence of elections for the directors from each division at different times to provide for staggered terms of office.

#### RECOMMENDED HEARING PROCEDURE:

President: Declare the Board meeting of April 8, 2019, to be the time and place for a hearing on evaluating a change in the elections process for the Irvine Ranch Water District Board of Directors and establishing division boundaries, and ask the Board Secretary to announce how the hearing was noticed.

Public Hearing: Evaluating a Change in the Elections Process for the Irvine Ranch Water District Board of Directors and Establishing Division Boundaries

April 8, 2019

Page 2

Board Secretary: Announce that the hearing was noticed by publication in the *Orange County Register* on Sunday, March 24, 2019; by publication in Spanish in the *Excelsior Unidos* on Friday, March 29, 2019; by publication in Korean in the *Korea Times* on Saturday, March 23, 2019; by publication in English and Traditional Chinese in the *World Journal* on Saturday, March 23, 2019, and Sunday, March 24, 2019; by publication in Farsi in *Hafteh Bazaar* on Friday, March 29, 2019; by electronic posting in English, Farsi, Korean, Traditional Chinese, and Spanish on the IRWD website, which can be translated into approximately 20 languages; and by physical posting at IRWD's headquarters. Announce that two additional draft maps — Map E-1 and Map E-2 — were published on IRWD's website on March 26, 2019. The Board Secretary presents affidavits of posting and proof of publication to the Board related to the hearing.

Board of Directors: The Board of Directors receives and files the affidavits of posting and proof of publication as presented by the Board Secretary.

President: Request legal counsel to describe the nature of the proceedings, and to explain the purpose of the hearing.

Legal Counsel: Describe the nature of the proceedings, and explain the purpose of the hearing as being the opportunity to invite and solicit public comment on the draft division maps, which have been published by the District on its website at least seven days prior to the hearing, and the potential sequence of elections for the directors from each division at different times to provide for staggered terms of office.

Board of Directors: Open the hearing by taking the following recommended action:

RECOMMENDED MOTION: THAT THE PUBLIC HEARING BE OPENED TO SOLICIT AND ACCEPT COMMENT ON THE PROPOSED MOVE TO BY-DIVISION ELECTIONS, THE COMPOSITION OF DIVISIONS, THE DRAFT DIVISION MAPS, AND SEQUENCE OF ELECTIONS.

President: Request that the Government Relations Officer/Deputy General Counsel provide a report to the Board regarding the draft division maps, and on any written comments received.

Government  
Relations Officer/  
Deputy General  
Counsel:

Provide a report to the Board regarding the draft division maps, and on any written comments received.

President: Inquire whether there is any person present who wishes to provide comments on the proposed move to by-division elections, the composition of divisions, the draft maps, and the sequence of elections.

Inquire whether there are any comments or questions from members of the Board of Directors. After comments or questions, state that the hearing will be closed.

Board of Directors: Close the hearing. Take one of the following recommended actions:

RECOMMENDED MOTION: THAT THIS PUBLIC HEARING BE CLOSED AND THAT THE BOARD AUTHORIZE STAFF TO AGENDIZE AN ADDITIONAL PUBLIC HEARING FOR MAY 13, 2019, FOR THE BOARD OF DIRECTORS TO CONSIDER FINAL ACTION ON A TRANSITION TO BY-DIVISION ELECTIONS, AND TO CONSIDER ADOPTION OF A FINAL MAP OF DIVISION BOUNDARIES BASED ON MAP \_\_\_ (C, C-1, D, D-1, E, E-1 OR E-2), AND A SEQUENCE OF ELECTIONS WITH THE ELECTION FOR DIVISION NUMBERS \_\_\_ AND \_\_\_ (1, 2, 3, 4, OR 5) TO BE HELD IN 2020 AND THE ELECTION FOR DIVISION NUMBERS \_\_\_\_, \_\_\_\_ AND \_\_\_ (1, 2, 3, 4, OR 5) TO BE HELD IN 2022.

OR

RECOMMENDED MOTION: THAT THIS PUBLIC HEARING BE CLOSED, AND THAT THE BOARD AUTHORIZE STAFF TO REVISE THE DRAFT MAP(S) OR DEVELOP ADDITIONAL MAP(S), AND AGENDIZE AN ADDITIONAL PUBLIC HEARING FOR MAY 13, 2019, FOR THE BOARD OF DIRECTORS TO SOLICIT AND ACCEPT COMMENT ON THE PROPOSED MOVE TO BY-DIVISION ELECTIONS, THE COMPOSITION OF DIVISIONS, DRAFT DIVISION MAPS, AND SEQUENCE OF ELECTIONS.

BACKGROUND:

In 2002, Governor Gray Davis signed the California Voting Rights Act (CVRA) into law. The CVRA states that an at-large method of election may not be used to elect local governing boards if it “impairs the ability of a protected class to elect candidates of its choice or its ability to influence the outcome of an election.” (Elections Code §14027)

A violation of the CVRA may be established if it is shown that racially polarized voting, combined with an at-large voting system, impairs the ability of a protected class of voters to elect candidates of its choice or to influence the outcome of an election. (Elections Code §14028(a)) Under the CVRA, “racially polarized voting” means voting in which there is a difference between the choice of candidates or other electoral choices that are preferred by voters in a

protected class, and in the choice of candidates and electoral choices that are preferred by voters in the rest of the electorate. (Elections Code §14026(e))

As of the writing of this report, IRWD has not been presented with any evidence of racially polarized voting in its elections, but many local governments have had their at-large method of election challenged under the CVRA. Additionally, many local governments have voluntarily moved to a by-division method of election because it is the only election method not vulnerable to a challenge under the CVRA.

#### Statutorily Mandated Process for Evaluating a By-Division Method of Election:

While the current at-large method of election used by IRWD pursuant to Water Code section 35180 has served the District's customers and constituents well, Elections Code section 10650 allows the board of a special district, like IRWD, to move from an at-large method of election to a by-division method of election in furtherance of the purposes of the CVRA.

Elections Code section 10010 provides the process for evaluating divisions and a transition to by-division elections. That process requires, at a minimum, that a special district:

- Adopt a resolution of intent to change the election system;
- Hold at least four public hearings to discuss division maps and the sequence of the division elections;
  - The first and second hearings must be held within 30 days of each other and the public is invited to provide input regarding the composition of the divisions and sequence of elections;
  - After draft division maps are drawn, one or more proposed maps are published at least seven days before the third hearing. Any further revisions to the proposed map(s) would be published at least seven days before being adopted; and
  - The third and fourth public hearings are held within 45 days of each other; and
- Hold at least one more public hearing at which it considers final action to transition to by-division elections and considers adoption of a final map of division boundaries.

#### Legally Required Factors Considered When Evaluating Division Boundaries:

While a number of federal and state laws govern the drawing of division boundaries, the U.S. Constitution establishes the fundamental principle which governs the drawing of division boundaries. Above all else, the Constitution requires that divisions be equal, or nearly equal, in total population. Federal courts have ruled that this means that the population difference between the most and least populous divisions may not exceed ten percent. California Elections

Code section 22000 further suggests that divisions should be drawn to be, “as far as practicable, equal in population” using the population numbers from the last federal decennial census.

Provided that the equality in population, based on the last decennial census, requirement is met, the Elections Code also allows for consideration of: 1) topography, 2) geography, 3) cohesiveness, contiguity, integrity, and compactness of territory, and 4) communities of interests of the division when determining where division boundaries are placed.

#### IRWD Process to Evaluate Establishment of Divisions and Elections by Divisions:

On April 2, 2018, the IRWD Board of Director adopted a resolution of “Intent to Initiate the Process of Establishing Divisions and Elections by Divisions.” In its adoption of the resolution, the Board determined that the public interest was best served by initiating the process to evaluate divisions and a transition to by-division elections. The Board authorized the General Manager, or his designee, to initiate a public evaluation process that complies with Elections Code section 10010, and encourages and allows for full public participation, careful consideration and input into an evaluation of divisions and a transition to by-division elections within IRWD.

The first step in the District’s evaluation process was the release of data related to the population characteristics of the IRWD’s service area. That data was presented to the Board during a Board workshop on May 14, 2018. Attached as Exhibit “A” is a copy of the summary of “Existing Conditions for Irvine Ranch Water District” provided to the Board.

The second step in the District’s evaluation process was to hold two public hearings, which were held on June 4 and June 18. These hearings were conducted before the drawing of a draft map or maps of proposed division boundaries. The purpose of the hearings was to invite and solicit public comment on the proposed move to by-division elections, the composition of divisions and the sequence of elections prior to the drawing of draft maps.

The third step in the District’s evaluation process was for the Board to discuss criteria to be used by the District when drawing proposed director division boundaries. The criteria was discussed at a Board Workshop held on August 13, 2018. The criteria discussed at the August 13 workshop is included in the presentation materials attached as Exhibit “B” and was presented to the Board at its December 10, 2018, and January 14, 2019, meetings.

Following the workshop, prior to the drawing of potential division area maps, the District invited the public to submit additional comments on the composition of possible divisions and to submit conceptual maps for consideration as the potential division area maps were drawn. That public comment period ran from August 15 to October 15, 2018. During the comment period, the District received two comments and maps from the public. Those comments and maps were provided to the Board at its last Board meeting and are posted on IRWD’s website.

On December 10, 2018, January 14, 2019, and March 11, 2019, respectively, IRWD held a third, fourth and fifth public hearing to invite and solicit public comment on the draft division maps, which have been published by the District on its website, and the potential sequence of elections for the directors from each division at different times to provide for staggered terms of office.

IRWD is now holding an additional public hearing to invite and solicit public comment on the draft division maps, which have been published by the District on its website, and the potential sequence of elections for the directors from each division at different times to provide for staggered terms of office. The nine draft maps presented for discussion and comment are attached as Exhibit “C”. The presentation, which will be made to the Board, is attached as Exhibit “B”.

It is important to note that the draft maps are a starting point for the Board’s discussion on possible division boundaries, and additional maps or refinements may be made should the Board want to see other options at the next public hearing.

FISCAL IMPACTS:

Due to the adoption of a resolution of “Intent to Initiate the Process of Establishing Divisions and Elections by Divisions” and by undertaking the Elections Code section 10010 process to evaluate by-divisions elections, the District is incurring costs of a demographer and special legal counsel in addition to potentially other costs.

ENVIRONMENTAL COMPLIANCE:

Not applicable.

COMMITTEE STATUS:

This item was not reviewed by a Committee.

LIST OF EXHIBITS:

- Exhibit “A” – Existing Conditions for Irvine Ranch Water District
- Exhibit “B” – Presentation Materials for the April 8, 2019, Public Hearing
- Exhibit “C” – Draft Division Maps C, C-1, D, E, E-1, and E-2

**Existing Conditions for Irvine Ranch Water District**

Table 1. Population by Race/Ethnicity for IRWD

	Number	Percent
<b>2010 Total Population</b>	<b>337,151</b>	<b>100.0%</b>
Hispanic or Latino of any Race	40,325	12.0%
Non-Hispanic White	171,195	50.8%
Non-Hispanic Asian	104,775	31.1%
Non-Hispanic Black or African-American	5,173	1.5%
All Other Non-Hispanic Races/Ethnicities	15,681	4.7%
<b>2010 Population 18 Years and Older</b>	<b>261,651</b>	<b>100.0%</b>
Hispanic or Latino of any Race	28,531	10.9%
Non-Hispanic White	138,759	53.0%
Non-Hispanic Asian	81,062	31.0%
Non-Hispanic Black or African-American	4,029	1.5%
All Other Non-Hispanic Races/Ethnicities	9,266	3.5%
<b>2016 Citizen Voting Age Population (CVAP)</b>	<b>244,343</b>	<b>100.0%</b>
Hispanic or Latino of any Race	27,413	11.2%
Non-Hispanic White	135,507	55.5%
Non-Hispanic Asian	68,731	28.1%
Non-Hispanic Black or African-American	4,810	2.0%
All Other Non-Hispanic Races/Ethnicities	7,879	3.2%

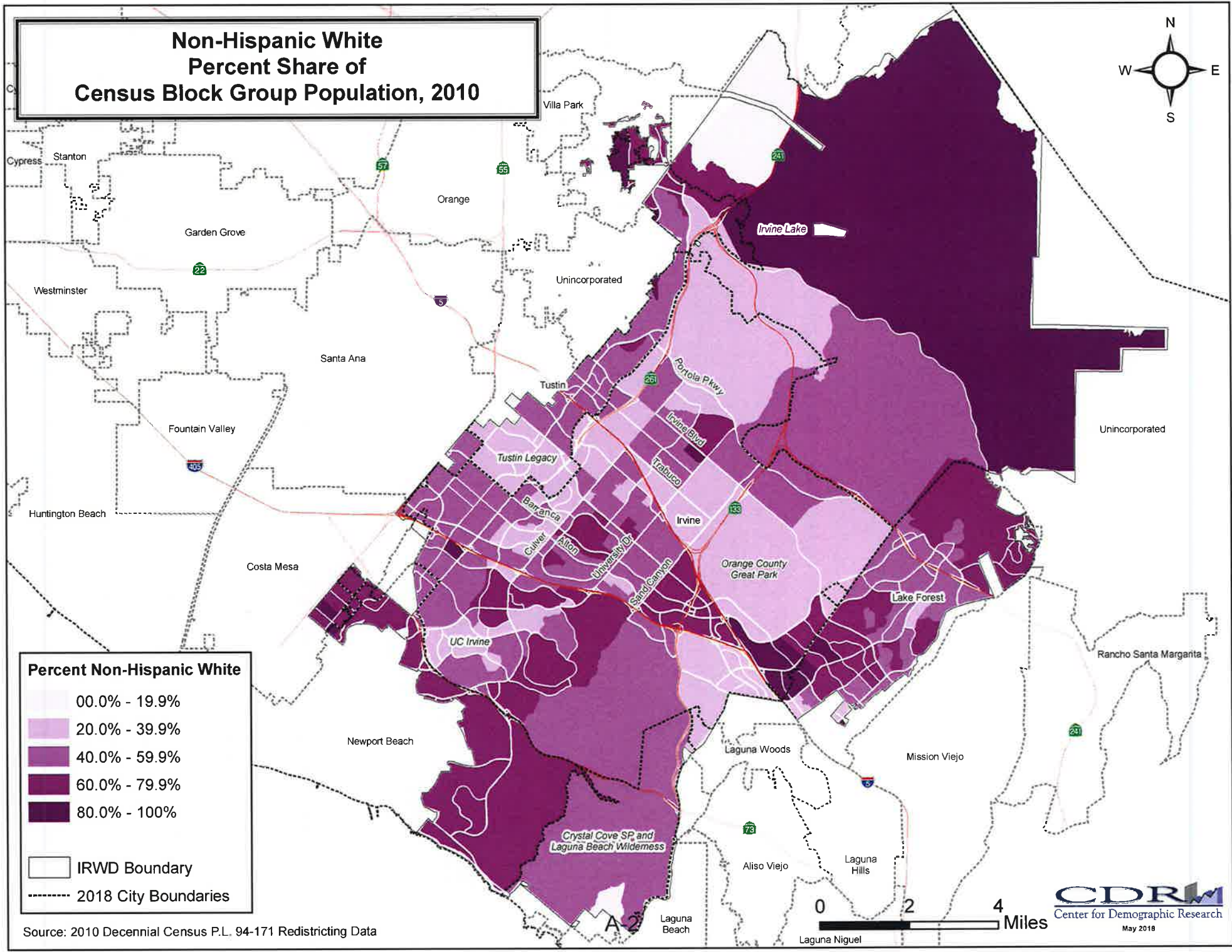
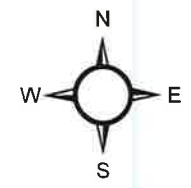
Sources: 2010 Decennial Census P.L. 94-171 Redistricting Data;  
 U.S. Census Bureau American Community Survey 5-year estimates, 2012-2016

The target director division population is calculated by dividing the total population by the number of board members.

Table 2. Target Population for Division Scenarios

Division ID	Division Type	Total 2010 Population	Target Population for Each Division	Division Majority (50% + 1)	Majority of CVAP (50% +1)
5	5-Division Plan	337,151	67,430	33,716	24,435

# Non-Hispanic White Percent Share of Census Block Group Population, 2010



**Percent Non-Hispanic White**

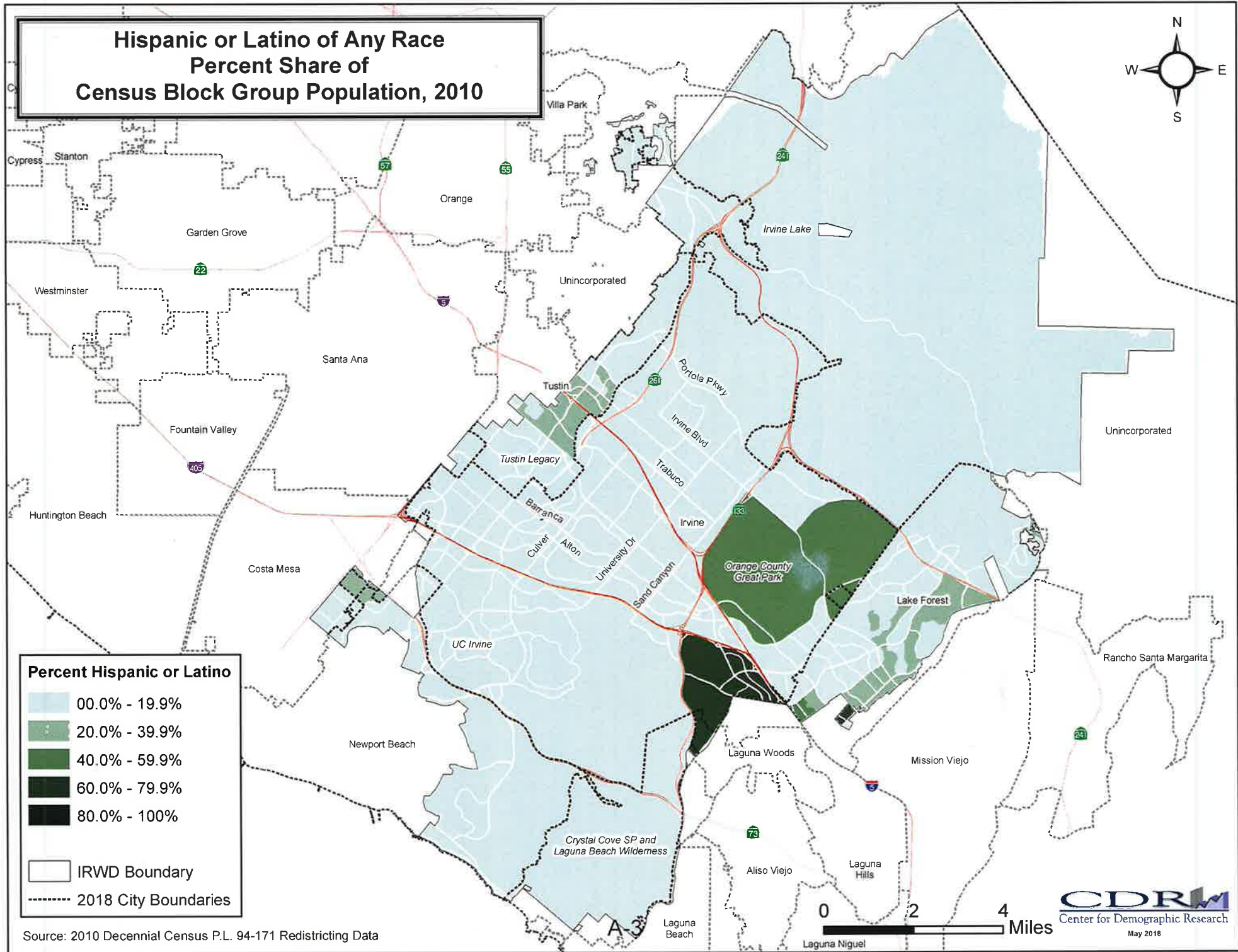
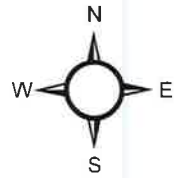
- 00.0% - 19.9%
- 20.0% - 39.9%
- 40.0% - 59.9%
- 60.0% - 79.9%
- 80.0% - 100%

IRWD Boundary  
 2018 City Boundaries

Source: 2010 Decennial Census P.L. 94-171 Redistricting Data



# Hispanic or Latino of Any Race Percent Share of Census Block Group Population, 2010



## Percent Hispanic or Latino

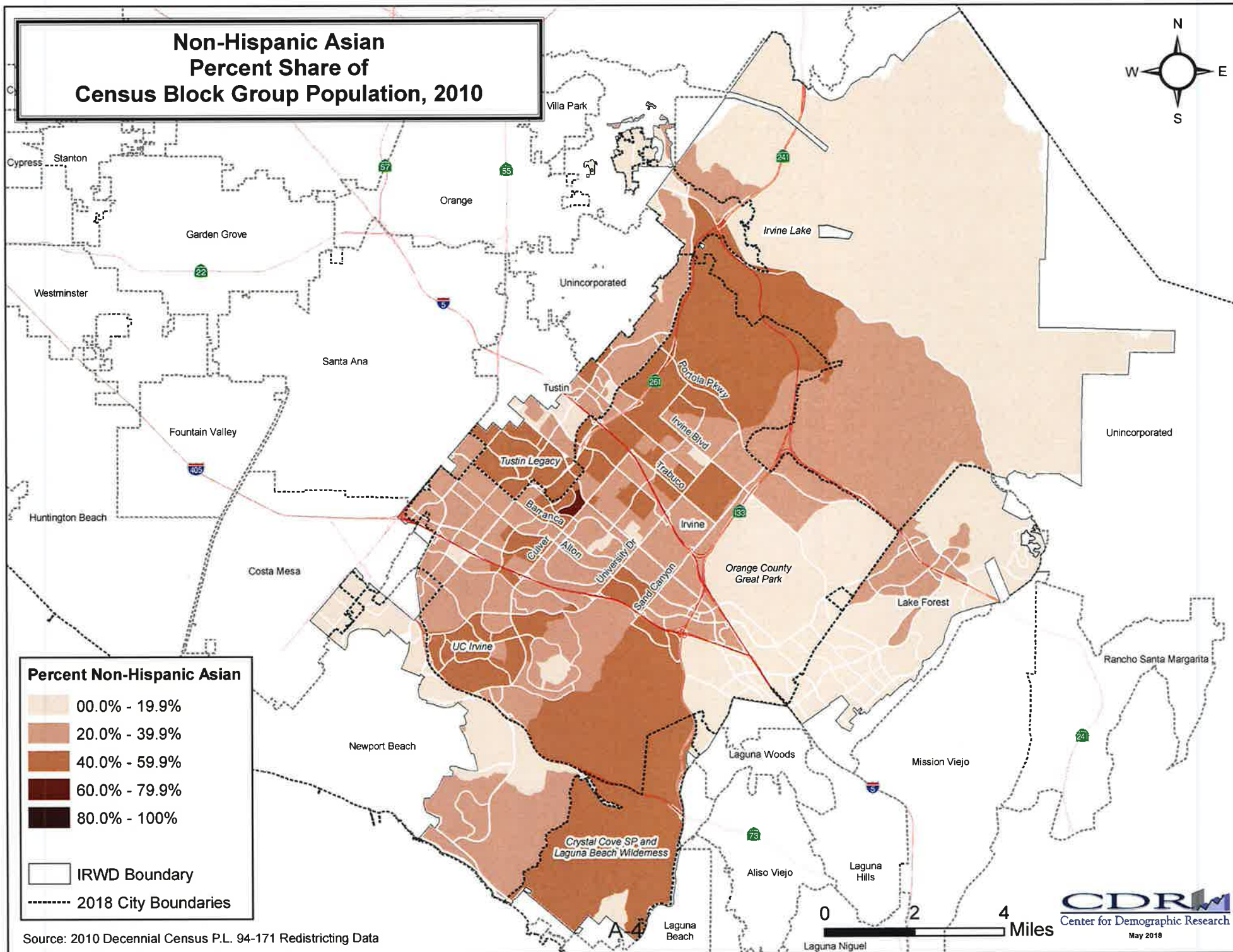
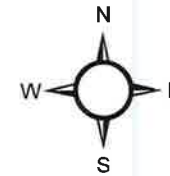
- 00.0% - 19.9%
- 20.0% - 39.9%
- 40.0% - 59.9%
- 60.0% - 79.9%
- 80.0% - 100%

- IRWD Boundary
- 2018 City Boundaries

Source: 2010 Decennial Census P.L. 94-171 Redistricting Data



# Non-Hispanic Asian Percent Share of Census Block Group Population, 2010



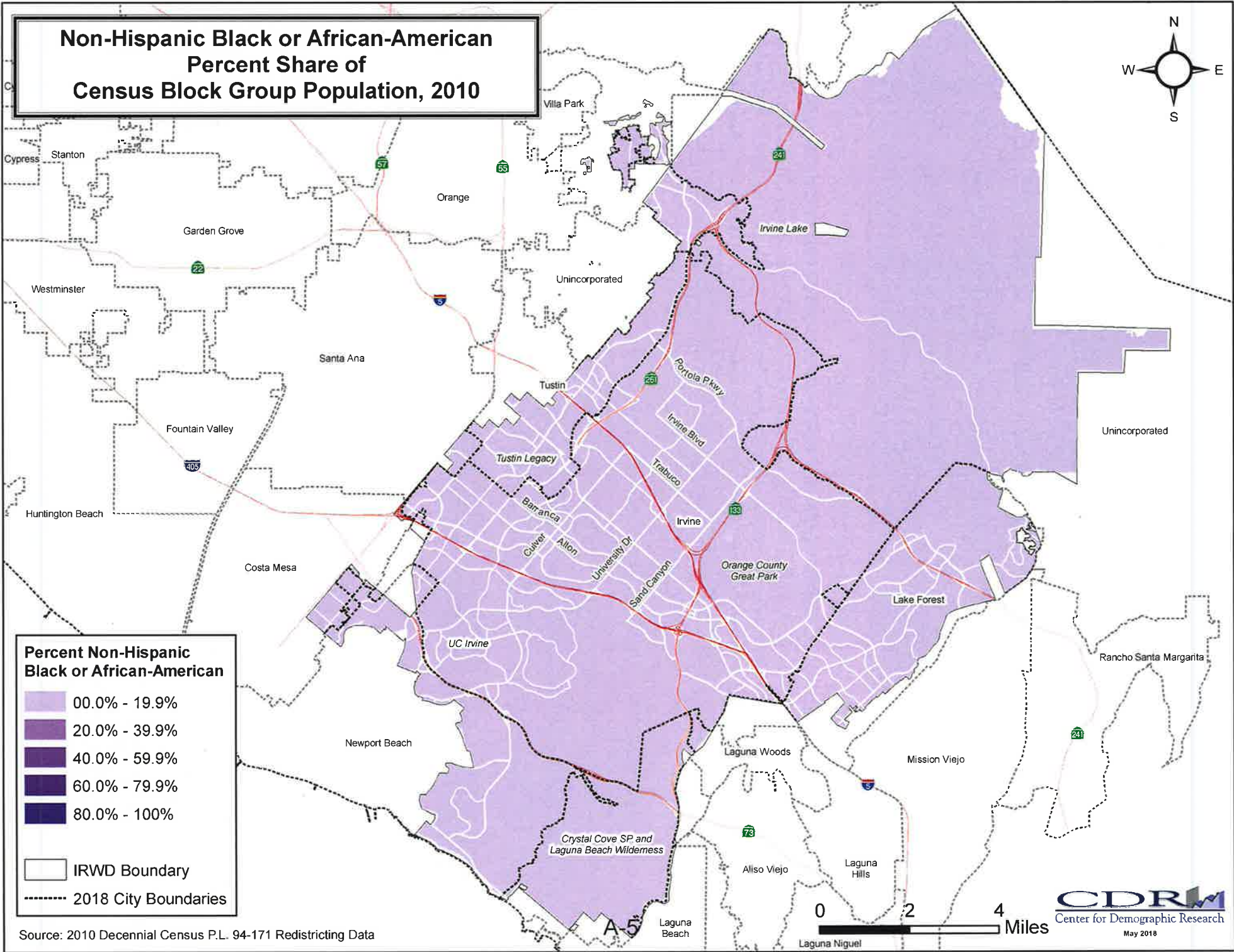
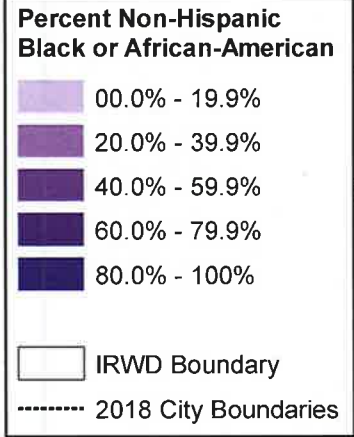
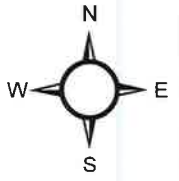
## Percent Non-Hispanic Asian

- 00.0% - 19.9%
- 20.0% - 39.9%
- 40.0% - 59.9%
- 60.0% - 79.9%
- 80.0% - 100%

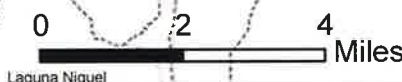
- IRWD Boundary
- 2018 City Boundaries

Source: 2010 Decennial Census P.L. 94-171 Redistricting Data

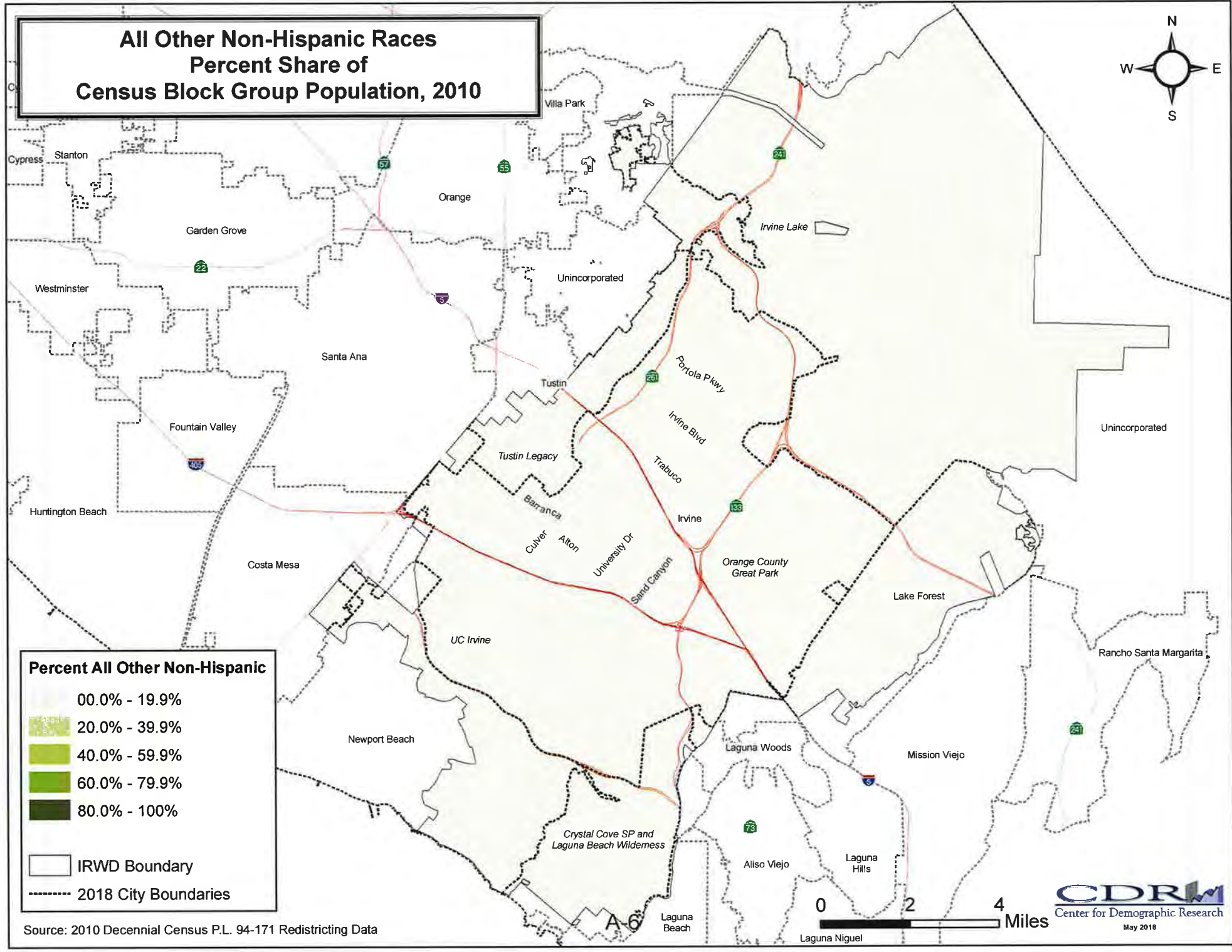
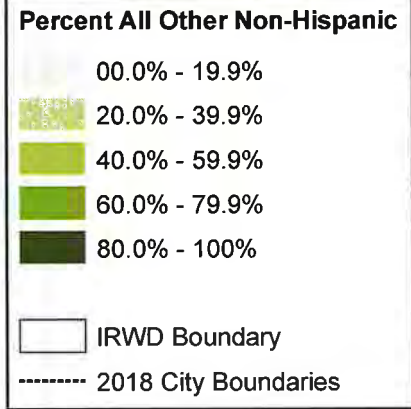
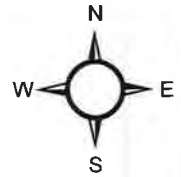
# Non-Hispanic Black or African-American Percent Share of Census Block Group Population, 2010



Source: 2010 Decennial Census P.L. 94-171 Redistricting Data

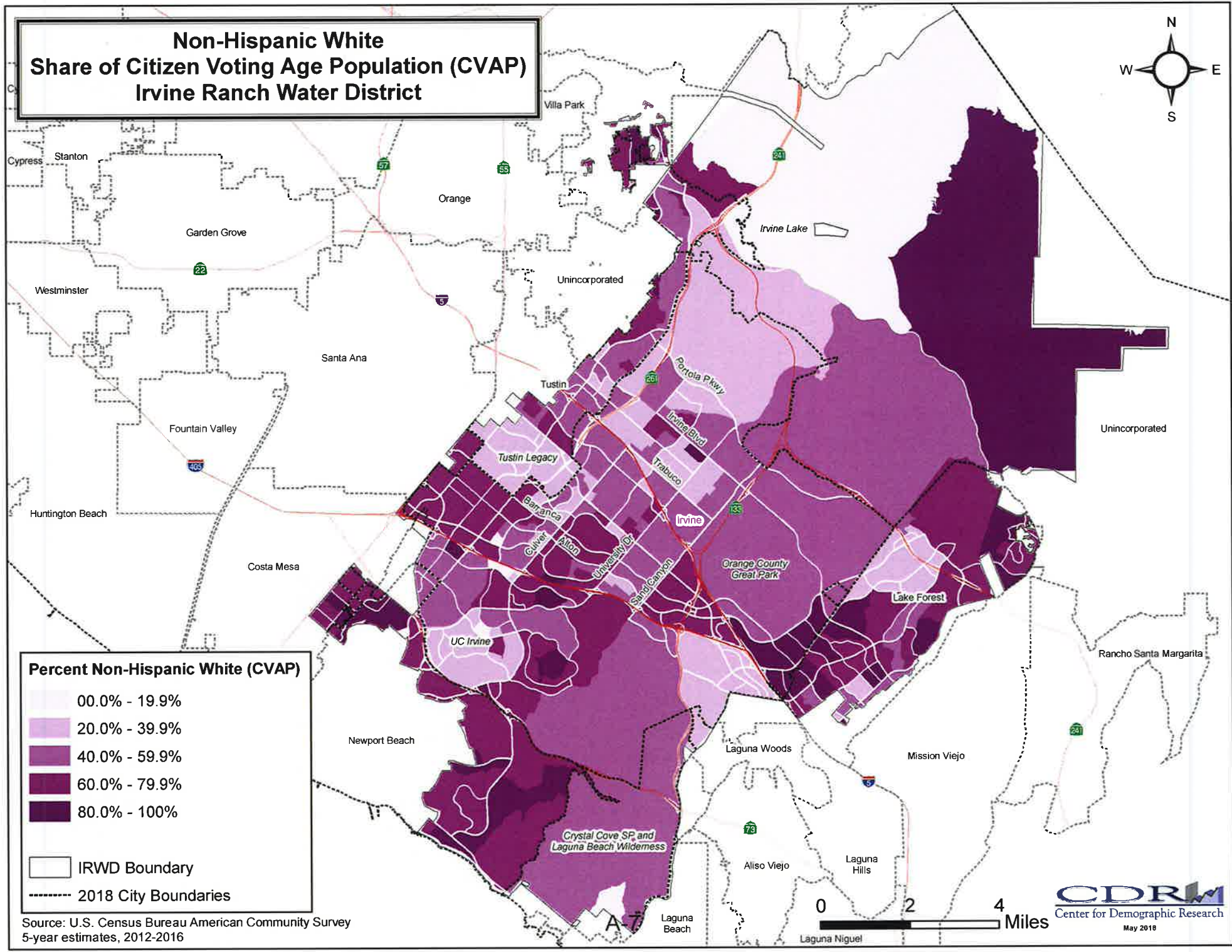
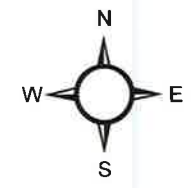


# All Other Non-Hispanic Races Percent Share of Census Block Group Population, 2010



Source: 2010 Decennial Census P.L. 94-171 Redistricting Data

# Non-Hispanic White Share of Citizen Voting Age Population (CVAP) Irvine Ranch Water District

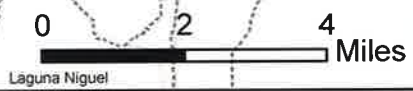


**Percent Non-Hispanic White (CVAP)**

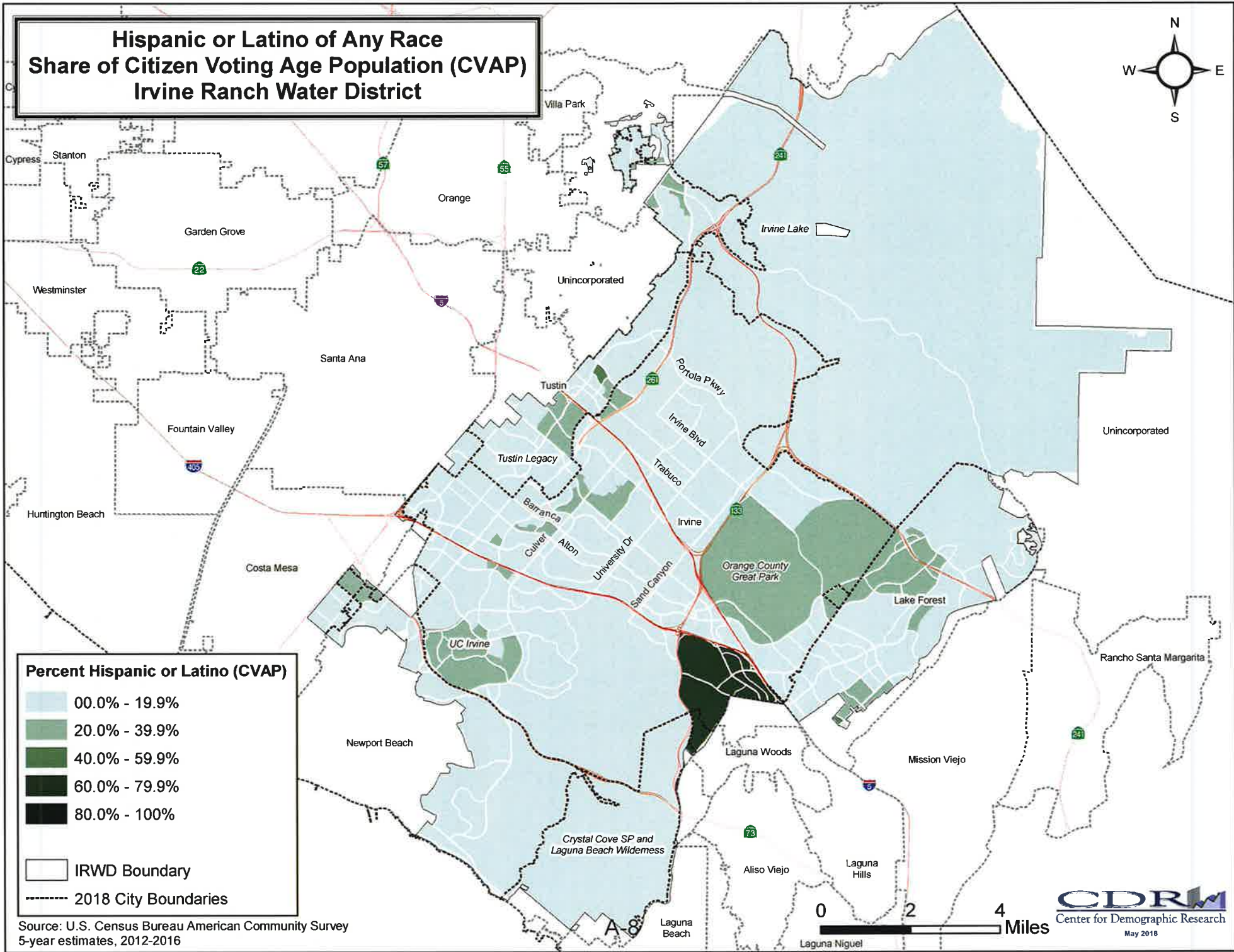
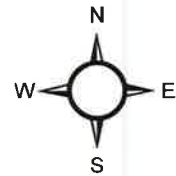
- 00.0% - 19.9%
- 20.0% - 39.9%
- 40.0% - 59.9%
- 60.0% - 79.9%
- 80.0% - 100%

IRWD Boundary  
 2018 City Boundaries

Source: U.S. Census Bureau American Community Survey  
5-year estimates, 2012-2016



# Hispanic or Latino of Any Race Share of Citizen Voting Age Population (CVAP) Irvine Ranch Water District

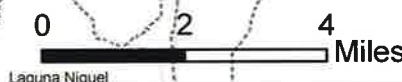


## Percent Hispanic or Latino (CVAP)

- 00.0% - 19.9%
- 20.0% - 39.9%
- 40.0% - 59.9%
- 60.0% - 79.9%
- 80.0% - 100%

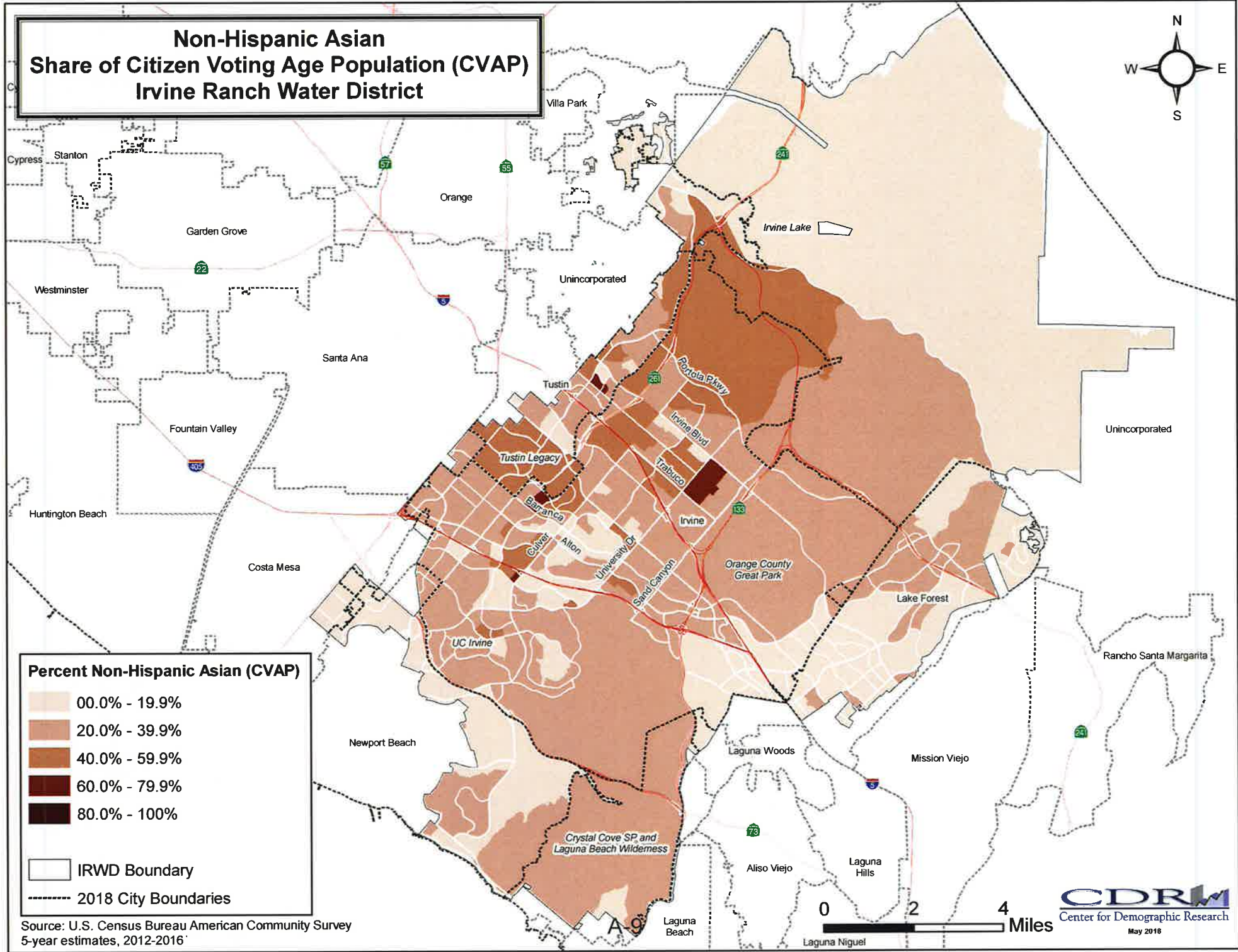
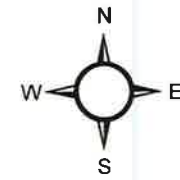
- IRWD Boundary
- 2018 City Boundaries

Source: U.S. Census Bureau American Community Survey  
5-year estimates, 2012-2016



**CDRM**  
Center for Demographic Research  
May 2018

# Non-Hispanic Asian Share of Citizen Voting Age Population (CVAP) Irvine Ranch Water District



## Percent Non-Hispanic Asian (CVAP)

- 00.0% - 19.9%
- 20.0% - 39.9%
- 40.0% - 59.9%
- 60.0% - 79.9%
- 80.0% - 100%

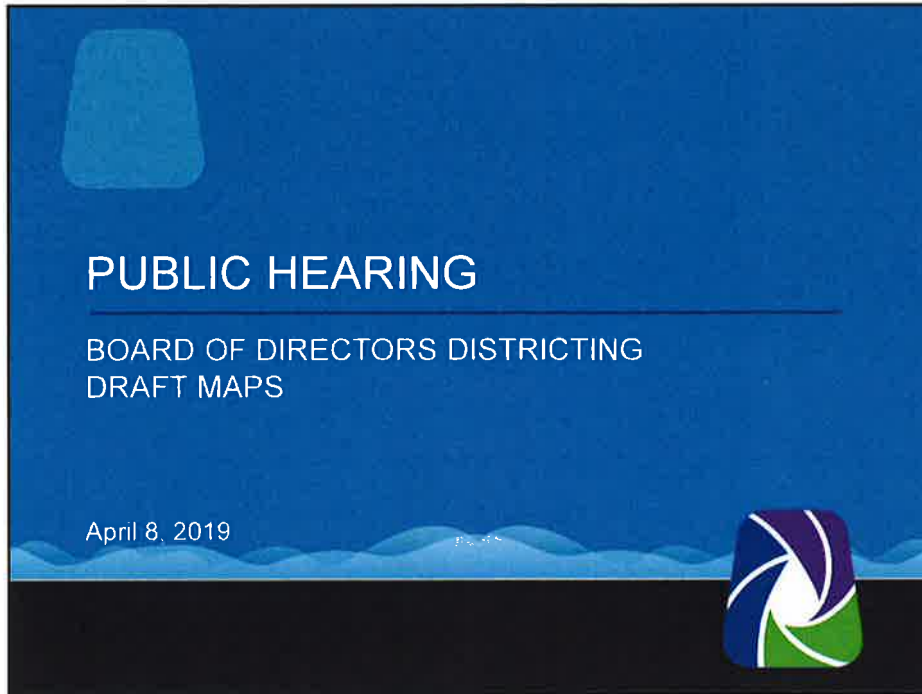
- IRWD Boundary
- 2018 City Boundaries

Source: U.S. Census Bureau American Community Survey  
5-year estimates, 2012-2016



**CDRM**  
Center for Demographic Research  
May 2016

# EXHIBIT "B"

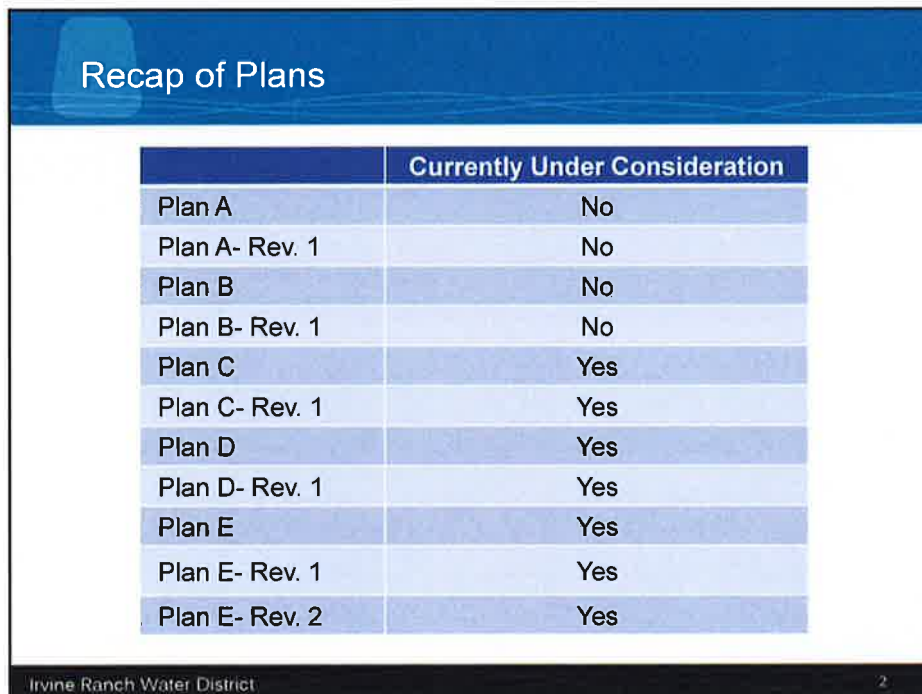


A blue title slide for a public hearing. The text is white and centered. At the bottom right is a logo with purple, blue, and green curved shapes. The date 'April 8, 2019' is in the bottom left.

## PUBLIC HEARING

BOARD OF DIRECTORS DISTRICTING  
DRAFT MAPS

April 8, 2019



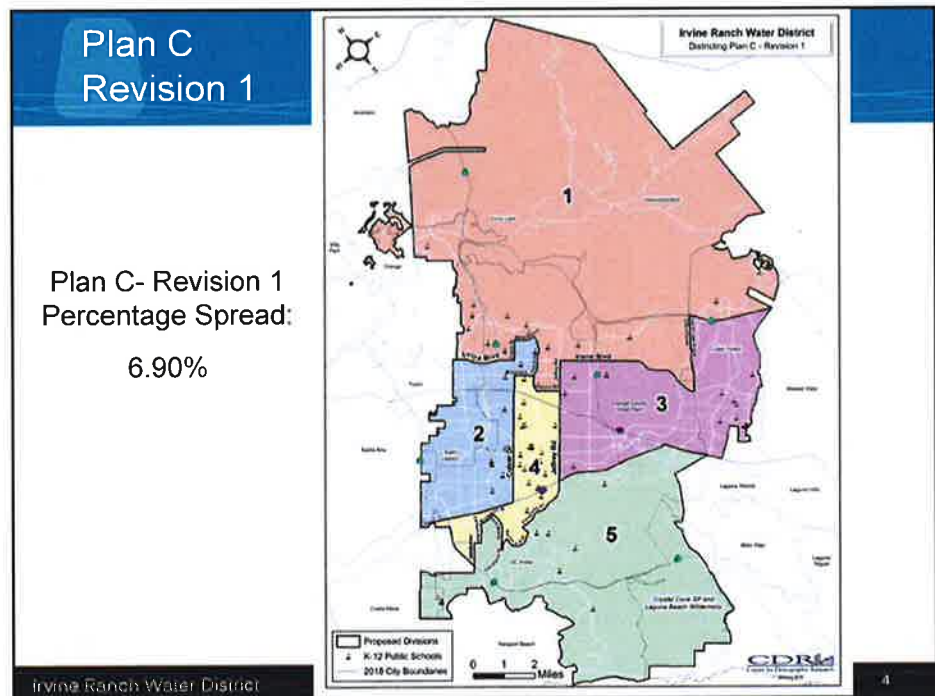
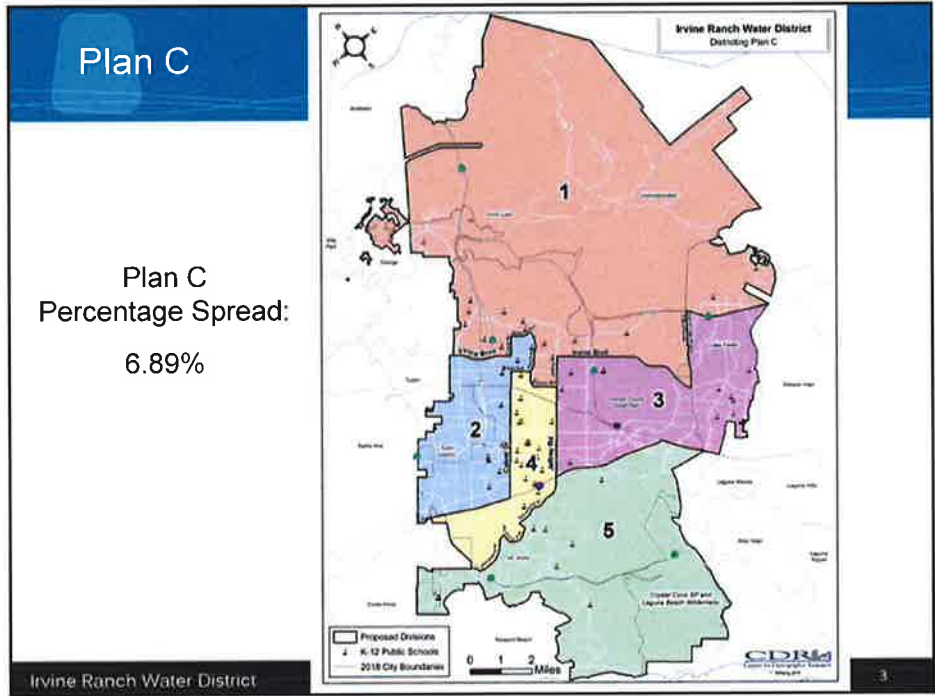
A slide titled 'Recap of Plans' containing a table. The table has two columns: the first lists plan names, and the second is titled 'Currently Under Consideration' with 'Yes' or 'No' responses. The slide footer includes 'Irvine Ranch Water District' and the number '2'.

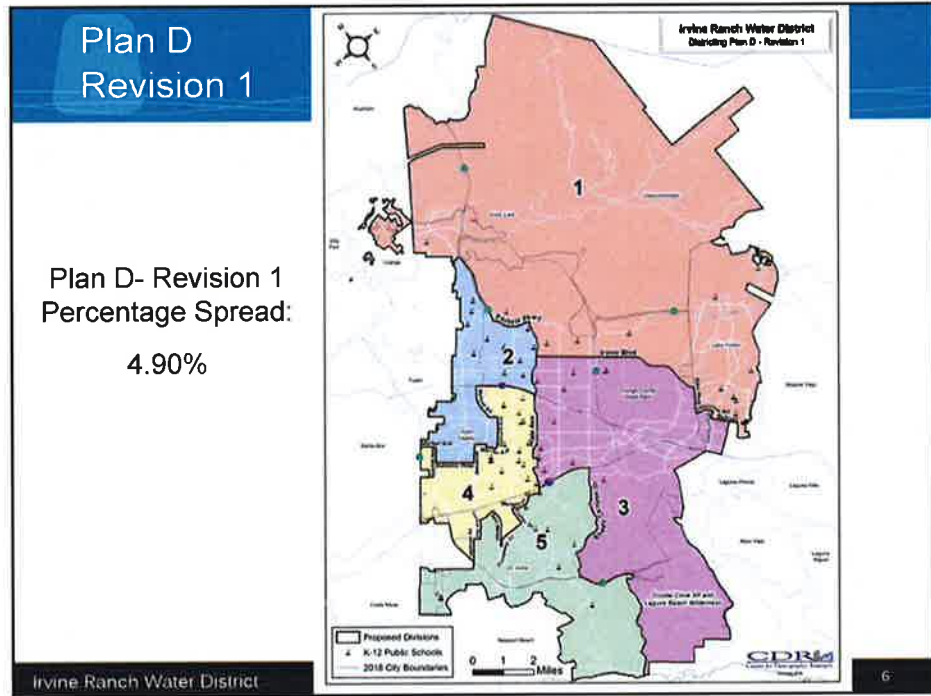
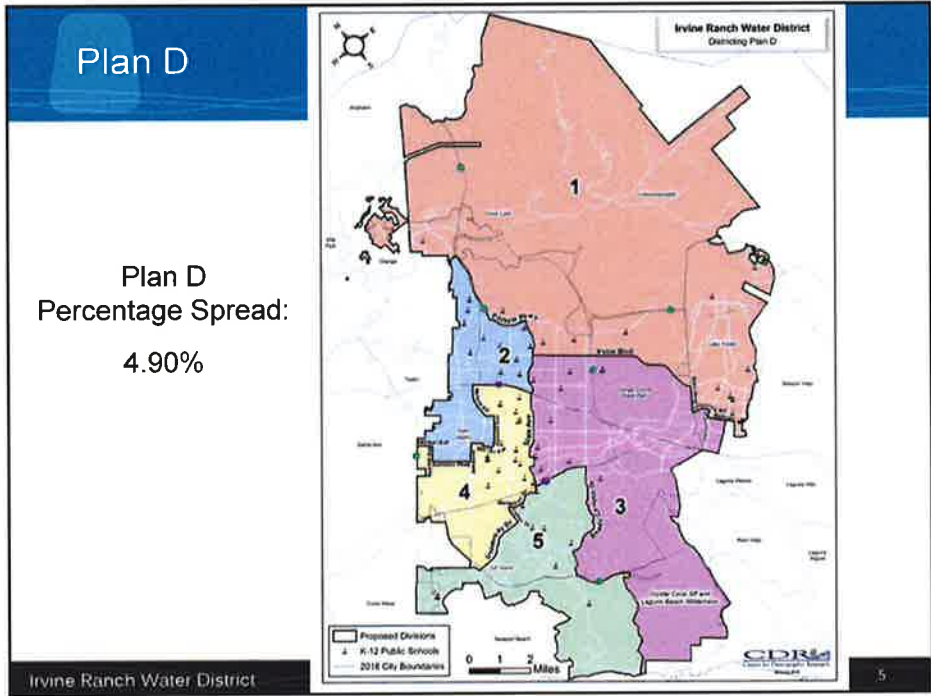
### Recap of Plans

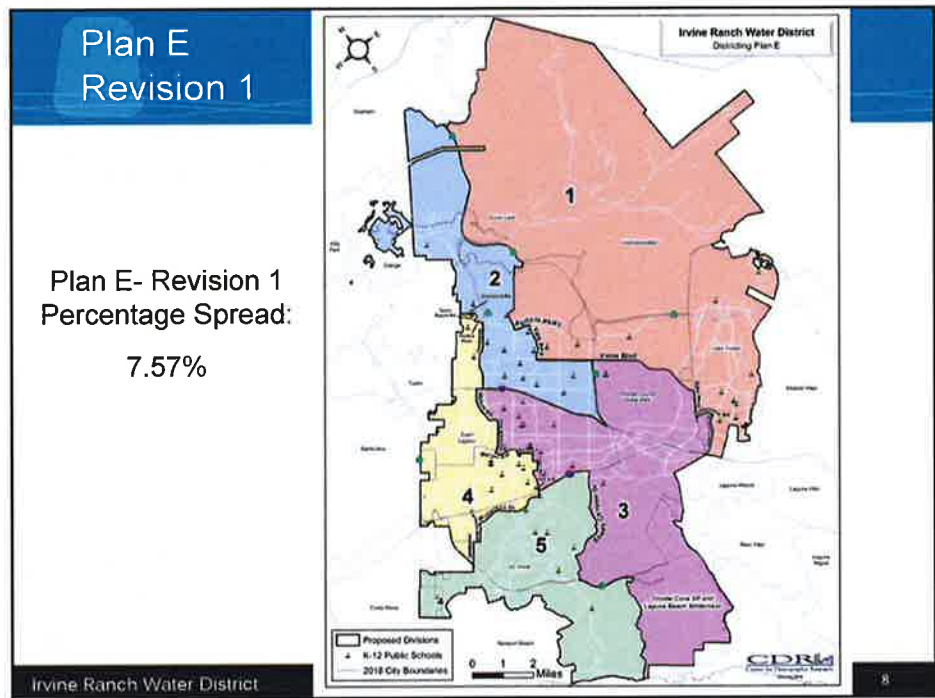
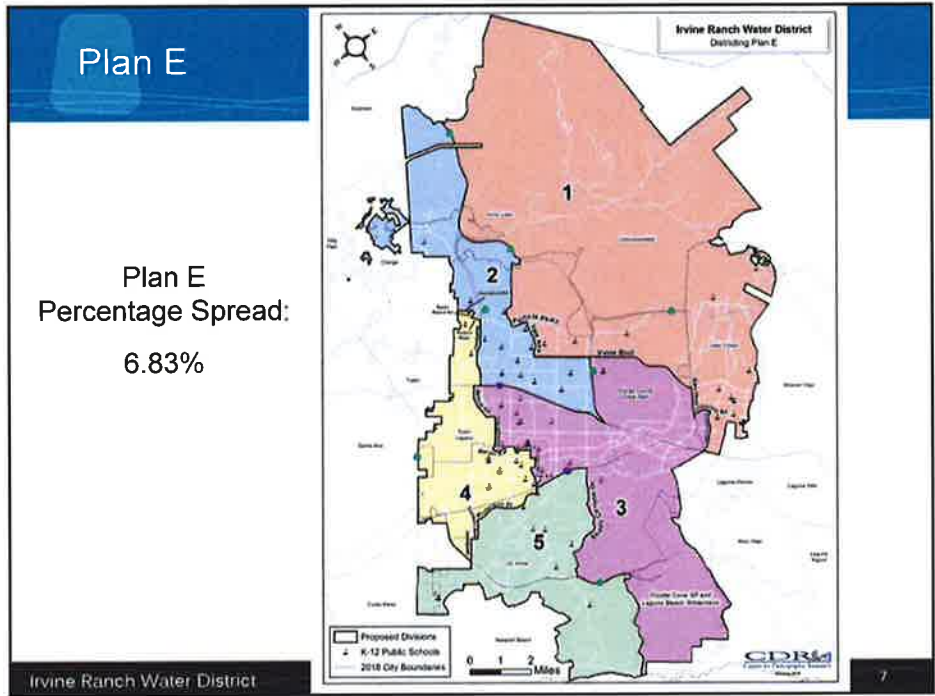
	Currently Under Consideration
Plan A	No
Plan A- Rev. 1	No
Plan B	No
Plan B- Rev. 1	No
Plan C	Yes
Plan C- Rev. 1	Yes
Plan D	Yes
Plan D- Rev. 1	Yes
Plan E	Yes
Plan E- Rev. 1	Yes
Plan E- Rev. 2	Yes

Irvine Ranch Water District 2



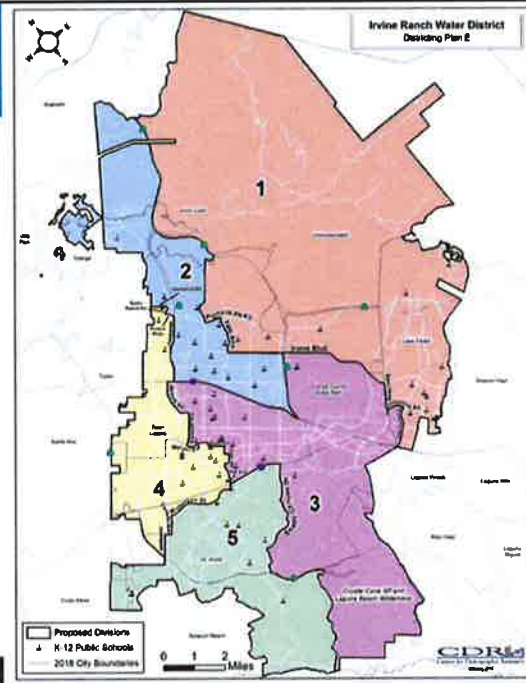






## Plan E Revision 2

Plan E- Revision 2  
Percentage Spread:  
5.44%

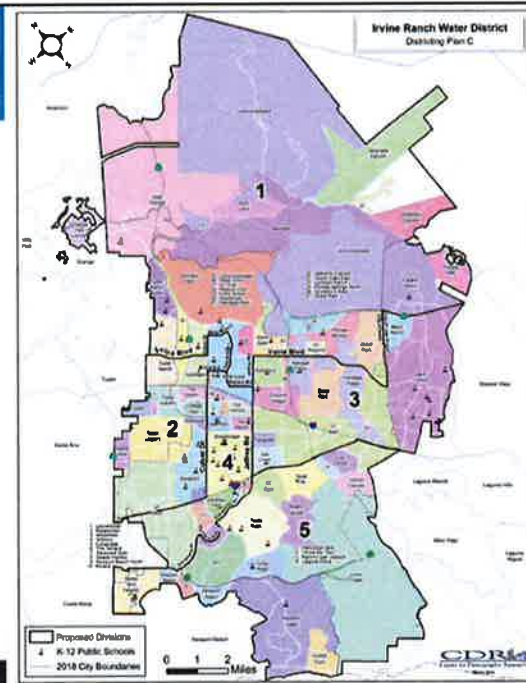


Irvine Ranch Water District

9

## Plan C

Plan C  
Percentage Spread:  
6.89%

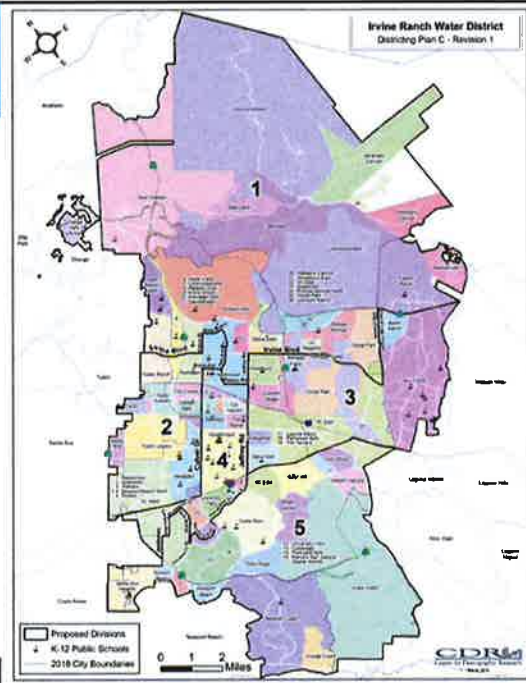


Irvine Ranch Water District

10

## Plan C Revision 1

Plan C- Revision 1  
Percentage Spread:  
6.90%

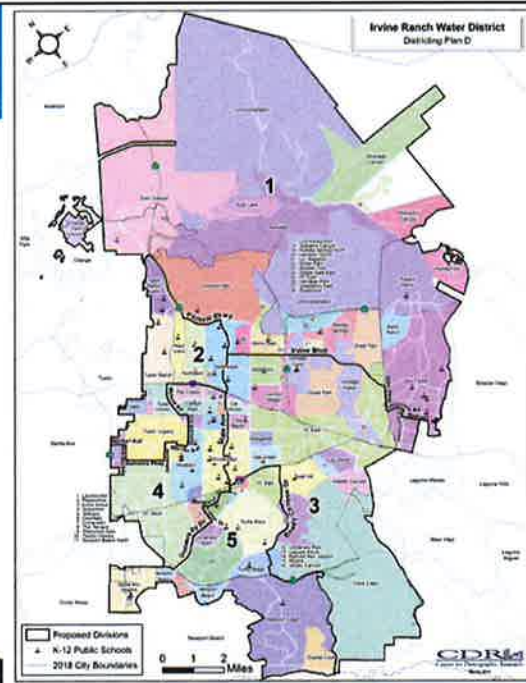


Irvine Ranch Water District

11

## Plan D

Plan D  
Percentage Spread:  
4.90%

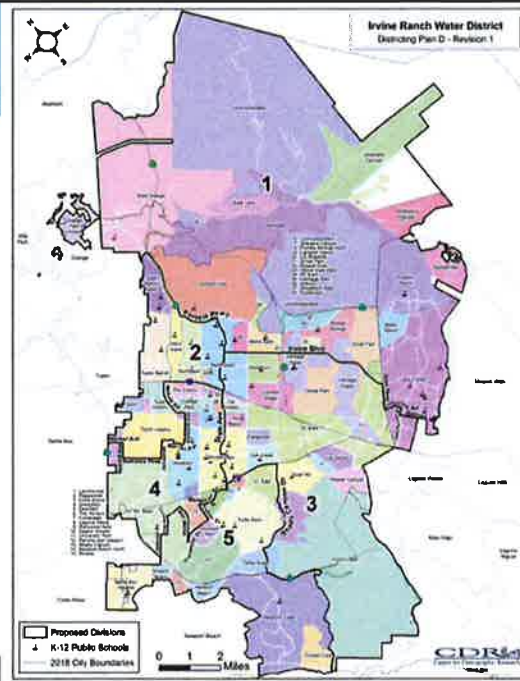


Irvine Ranch Water District

12

## Plan D Revision 1

Plan D- Revision 1  
Percentage Spread:  
4.90%

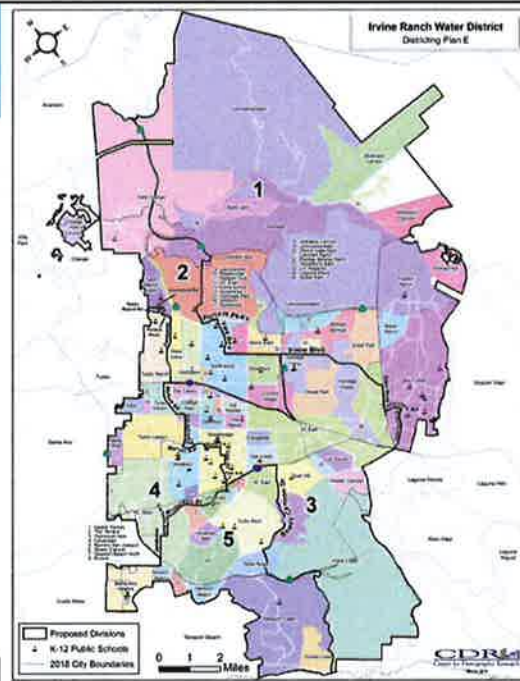


Irvine Ranch Water District

13

## Plan E

Plan E  
Percentage Spread:  
6.83%

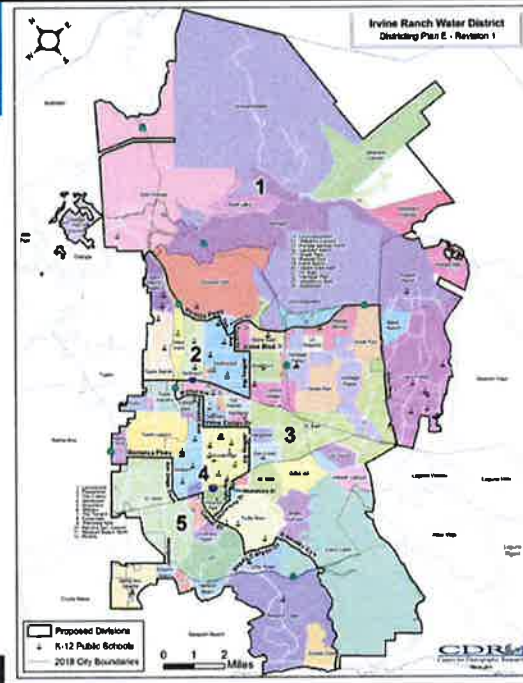


Irvine Ranch Water District

14

## Plan E Revision 1

Plan E- Revision 1  
Percentage Spread:  
7.57%

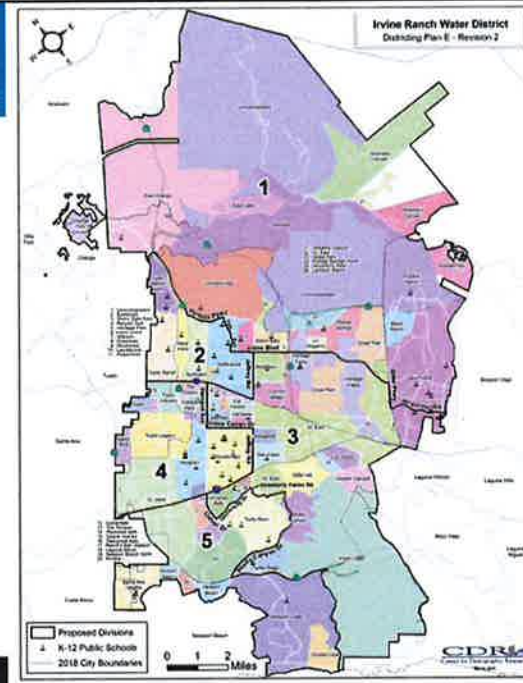


Irvine Ranch Water District

15

## Plan E Revision 2

Plan E- Revision 2  
Percentage Spread:  
5.44%



Irvine Ranch Water District

16

## IRWD Criteria for Drawing Division Boundaries

- 1) Each director division shall contain a nearly equal number of inhabitants as reflected in the most recent decennial census.
- 2) Divisions shall be drawn in a manner that complies with the Federal Voting Rights Act.
- 3) Divisions shall consist of contiguous territory.
- 4) Divisions will be in as compact a form as possible given the other criteria set forth.
- 5) Division boundaries will respect communities of interest as much as possible.
- 6) Division boundaries will consider jurisdictional boundaries as much as possible.
- 7) Division boundaries will observe topography and geography such as man-made and natural geographic features insofar as practicable.
- 8) Division boundaries will attempt to allow the voters to retain current Directors if they choose by avoiding placing Directors in the same division insofar as this does not conflict with federal or state law requirements.
- 9) To the extent proposed divisions do not contain equal population as reflected in the most recent decennial census, population growth since the last decennial census and anticipated population growth before the next decennial census may be considered so long as population deviation remains within the parameters allowed by law.

## Population Spread by Proposed Plan

	Population Spread
Plan C	6.89%
Plan C- Rev. 1	6.90%
Plan D	4.90%
Plan D- Rev. 1	4.90%
Plan E	6.83%
Plan E- Rev. 1	7.57%
Plan E- Rev. 2	5.44%



## Proposed Divisions with Largest Share of Citizen Voting Age Population (CVAP)

	Division with largest Hispanic CVAP	Share	Division with largest NH Asian CVAP	Share
Plan C	5	12.7%	2	37.1%
Plan C- Rev. 1	5	12.7%	2	37.1%
Plan D	1	13.0%	2	40.0%
Plan D- Rev. 1	1	13.0%	2	40.0%
Plan E	1 & 5	12.7%	2	41.6%
Plan E- Rev. 1	5	13.7%	2	40.7%
Plan E- Rev. 2	5	13.3%	2	40.9%

## How many current board members are in each proposed division?

	1	2	3	4	5
Plan C	1	1	1	1	1
Plan C- Rev. 1	1	1	1	1	1
Plan D	1	1	1	1	1
Plan D- Rev. 1	1	1	1	1	1
Plan E	1	1	1	1	1
Plan E- Rev. 1	1	1	1	1	1
Plan E- Rev. 2	1	1	1	1	1

## Questions, Public Comment, & Next Steps

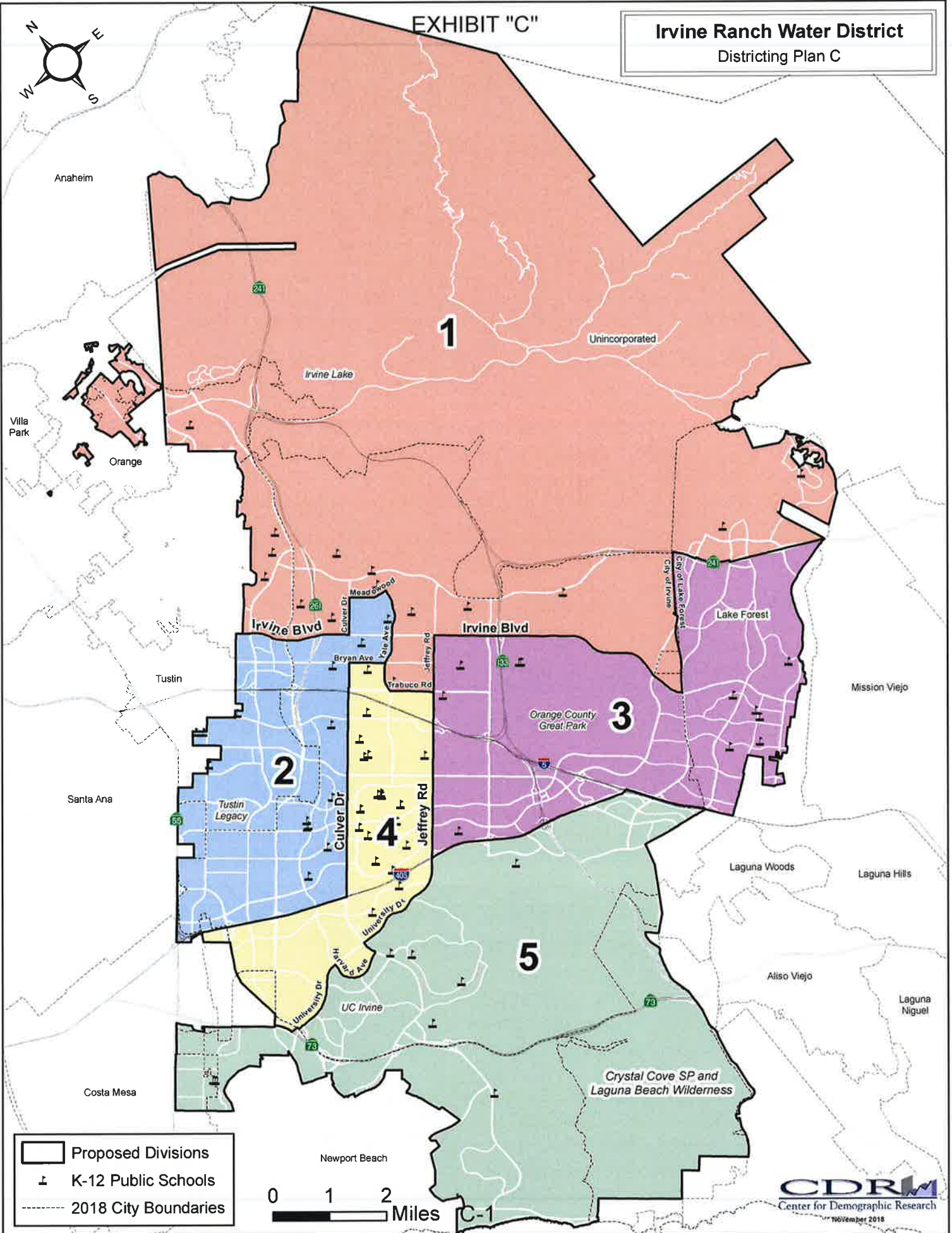





Irvine Ranch Water District

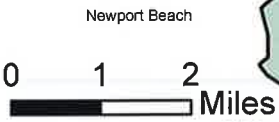
21

EXHIBIT "C"

Irvine Ranch Water District  
Districting Plan C



-  Proposed Divisions
-  K-12 Public Schools
-  2018 City Boundaries



C-1

Irvine Ranch Water District- Plan C

**Table 1. Population by Division and Race/Ethnicity**

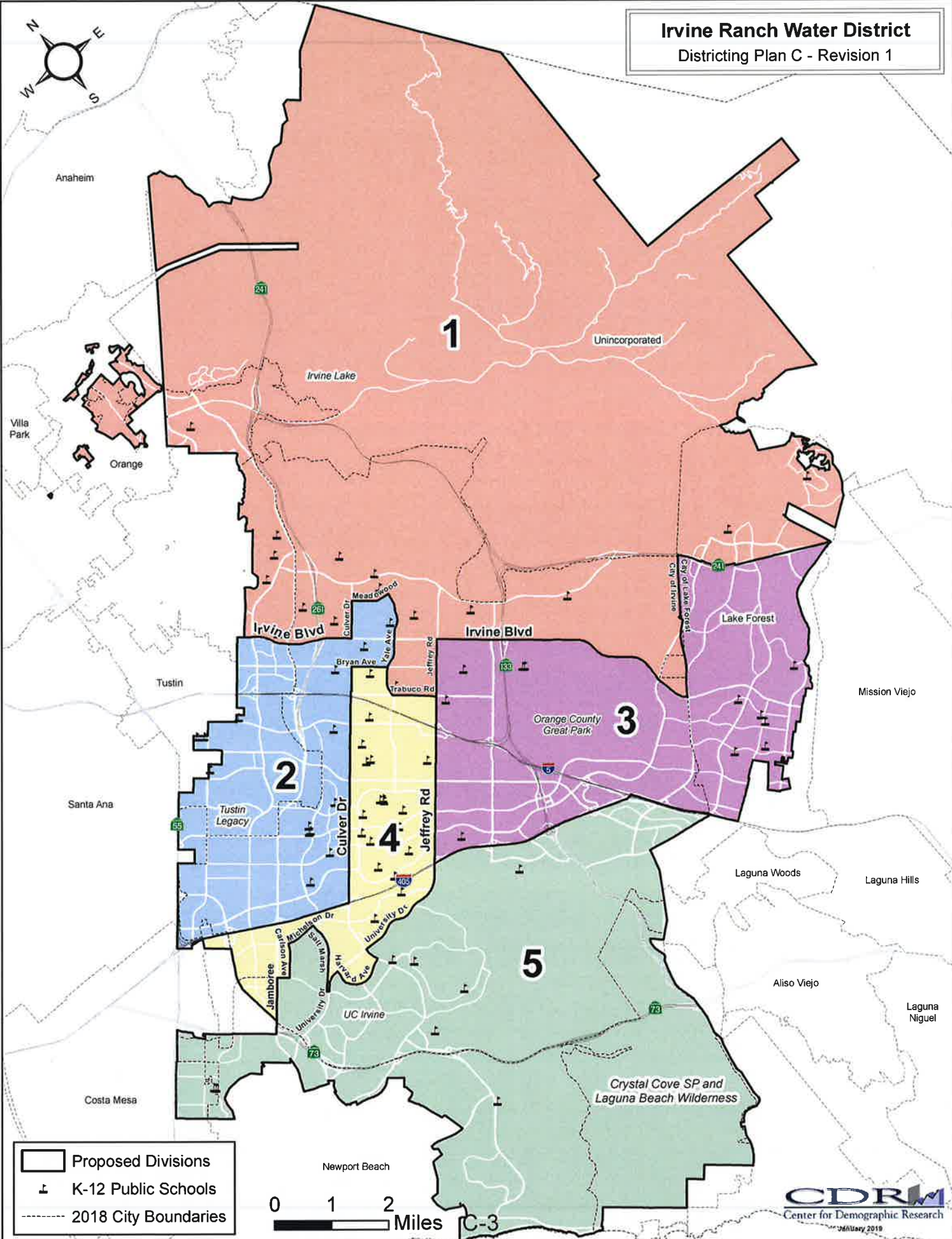
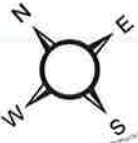
	DIVISION					Total
	1	2	3	4	5	
<b>Total Population</b>	67,287	68,734	64,489	67,504	69,137	<b>337,151</b>
Hispanic or Latino of any Race	7,207	8,366	11,970	6,565	6,217	40,325
Non-Hispanic White	34,971	27,775	34,295	34,978	39,178	171,197
Non-Hispanic Asian	21,208	27,914	14,497	21,318	19,838	104,775
Non-Hispanic Black or African-American	882	1,285	1,065	1,217	724	5,173
All Other Non-Hispanic Races/Ethnicities	3,019	3,394	2,662	3,426	3,180	15,681
<b>Population 18 Years and Older</b>	49,198	52,320	49,821	53,898	56,414	<b>261,651</b>
Hispanic or Latino of any Race	4,994	5,738	8,157	4,759	4,883	28,531
Non-Hispanic White	26,753	22,422	28,090	29,237	32,261	138,763
Non-Hispanic Asian	15,298	21,233	11,188	16,792	16,551	81,062
Non-Hispanic Black or African-American	681	988	846	904	610	4,029
All Other Non-Hispanic Races/Ethnicities	1,472	1,939	1,540	2,206	2,109	9,266
<b>Citizen Voting Age Population (CVAP)</b>	49,766	45,063	47,919	49,264	52,331	<b>244,343</b>
Hispanic or Latino of any Race	4,740	5,511	5,614	4,908	6,640	27,413
Non-Hispanic White	25,854	19,822	29,236	29,019	31,579	135,510
Non-Hispanic Asian	16,698	16,710	10,470	12,856	11,997	68,731
Non-Hispanic Black or African-American	889	1,160	1,328	971	462	4,810
All Other Non-Hispanic Races/Ethnicities	1,585	1,860	1,271	1,510	1,653	7,879

Target Division Population	67,430					
Division Difference from Target Population	-143	1,304	-2,941	74	1,707	
Percent Difference from Target Population	-0.21%	1.93%	-4.36%	0.11%	2.53%	
Percentage Spread	6.89%					

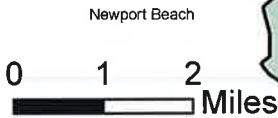
**Table 2. Share of Division Populations**

	DIVISION				
	1	2	3	4	5
<b>Total Population</b>	100.0%	100.0%	100.0%	100.0%	100.0%
Hispanic or Latino of any Race	10.7%	12.2%	18.6%	9.7%	9.0%
Non-Hispanic White	52.0%	40.4%	53.2%	51.8%	56.7%
Non-Hispanic Asian	31.5%	40.6%	22.5%	31.6%	28.7%
Non-Hispanic Black or African-American	1.3%	1.9%	1.7%	1.8%	1.0%
All Other Non-Hispanic Races/Ethnicities	4.5%	4.9%	4.1%	5.1%	4.6%
<b>Population 18 Years and Older</b>	100.0%	100.0%	100.0%	100.0%	100.0%
Hispanic or Latino of any Race	10.2%	11.0%	16.4%	8.8%	8.7%
Non-Hispanic White	54.4%	42.9%	56.4%	54.2%	57.2%
Non-Hispanic Asian	31.1%	40.6%	22.5%	31.2%	29.3%
Non-Hispanic Black or African-American	1.4%	1.9%	1.7%	1.7%	1.1%
All Other Non-Hispanic Races/Ethnicities	3.0%	3.7%	3.1%	4.1%	3.7%
<b>Citizen Voting Age Population (CVAP)</b>	100.0%	100.0%	100.0%	100.0%	100.0%
Hispanic or Latino of any Race	9.5%	12.2%	11.7%	10.0%	12.7%
Non-Hispanic White	52.0%	44.0%	61.0%	58.9%	60.3%
Non-Hispanic Asian	33.6%	37.1%	21.8%	26.1%	22.9%
Non-Hispanic Black or African-American	1.8%	2.6%	2.8%	2.0%	0.9%
All Other Non-Hispanic Races/Ethnicities	3.2%	4.1%	2.7%	3.1%	3.2%

**Irvine Ranch Water District**  
**Districting Plan C - Revision 1**



Proposed Divisions  
 K-12 Public Schools  
 2018 City Boundaries



C-3

Irvine Ranch Water District- Plan C- Revision 1

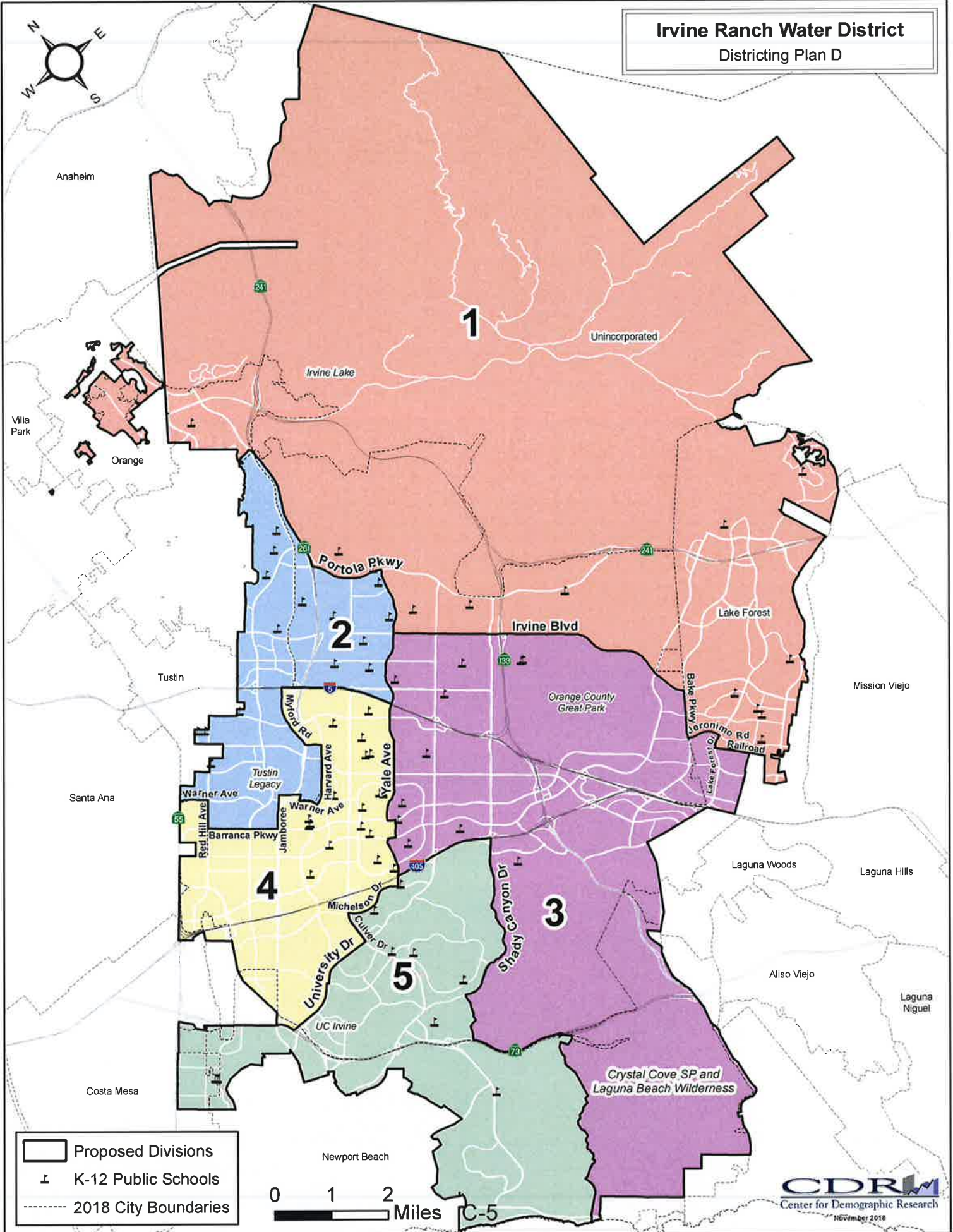
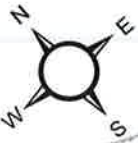
**Table 1. Population by Division and Race/Ethnicity**

	DIVISION					Total
	1	2	3	4	5	
<b>Total Population</b>	67,287	68,734	64,489	67,501	69,140	<b>337,151</b>
Hispanic or Latino of any Race	7,207	8,366	11,970	6,565	6,217	40,325
Non-Hispanic White	34,971	27,775	34,295	34,975	39,181	171,197
Non-Hispanic Asian	21,208	27,914	14,497	21,318	19,838	104,775
Non-Hispanic Black or African-American	882	1,285	1,065	1,217	724	5,173
All Other Non-Hispanic Races/Ethnicities	3,019	3,394	2,662	3,426	3,180	15,681
<b>Population 18 Years and Older</b>	49,198	52,320	49,821	53,896	56,416	<b>261,651</b>
Hispanic or Latino of any Race	4,994	5,738	8,157	4,759	4,883	28,531
Non-Hispanic White	26,753	22,422	28,090	29,235	32,263	138,763
Non-Hispanic Asian	15,298	21,233	11,188	16,792	16,551	81,062
Non-Hispanic Black or African-American	681	988	846	904	610	4,029
All Other Non-Hispanic Races/Ethnicities	1,472	1,939	1,540	2,206	2,109	9,266
<b>Citizen Voting Age Population (CVAP)</b>	49,766	45,063	47,919	49,262	52,333	<b>244,343</b>
Hispanic or Latino of any Race	4,740	5,511	5,614	4,908	6,640	27,413
Non-Hispanic White	25,854	19,822	29,236	29,017	31,581	135,510
Non-Hispanic Asian	16,698	16,710	10,470	12,856	11,997	68,731
Non-Hispanic Black or African-American	889	1,160	1,328	971	462	4,810
All Other Non-Hispanic Races/Ethnicities	1,585	1,860	1,271	1,510	1,653	7,879
Target Division Population	67,430					
Division Difference from Target Population	-143	1,304	-2,941	71	1,710	
Percent Difference from Target Population	-0.21%	1.93%	-4.36%	0.10%	2.54%	
Percentage Spread	6.90%					

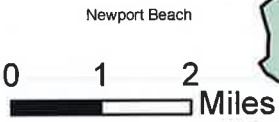
**Table 2. Share of Division Populations**

	DIVISION				
	1	2	3	4	5
<b>Total Population</b>	100.0%	100.0%	100.0%	100.0%	100.0%
Hispanic or Latino of any Race	10.7%	12.2%	18.6%	9.7%	9.0%
Non-Hispanic White	52.0%	40.4%	53.2%	51.8%	56.7%
Non-Hispanic Asian	31.5%	40.6%	22.5%	31.6%	28.7%
Non-Hispanic Black or African-American	1.3%	1.9%	1.7%	1.8%	1.0%
All Other Non-Hispanic Races/Ethnicities	4.5%	4.9%	4.1%	5.1%	4.6%
<b>Population 18 Years and Older</b>	100.0%	100.0%	100.0%	100.0%	100.0%
Hispanic or Latino of any Race	10.2%	11.0%	16.4%	8.8%	8.7%
Non-Hispanic White	54.4%	42.9%	56.4%	54.2%	57.2%
Non-Hispanic Asian	31.1%	40.6%	22.5%	31.2%	29.3%
Non-Hispanic Black or African-American	1.4%	1.9%	1.7%	1.7%	1.1%
All Other Non-Hispanic Races/Ethnicities	3.0%	3.7%	3.1%	4.1%	3.7%
<b>Citizen Voting Age Population (CVAP)</b>	100.0%	100.0%	100.0%	100.0%	100.0%
Hispanic or Latino of any Race	9.5%	12.2%	11.7%	10.0%	12.7%
Non-Hispanic White	52.0%	44.0%	61.0%	58.9%	60.3%
Non-Hispanic Asian	33.6%	37.1%	21.8%	26.1%	22.9%
Non-Hispanic Black or African-American	1.8%	2.6%	2.8%	2.0%	0.9%
All Other Non-Hispanic Races/Ethnicities	3.2%	4.1%	2.7%	3.1%	3.2%

# Irvine Ranch Water District Districting Plan D



Proposed Divisions  
 K-12 Public Schools  
 2018 City Boundaries



C-5

Irvine Ranch Water District- Plan D

**Table 1. Population by Division and Race/Ethnicity**

	DIVISION					Total
	1	2	3	4	5	
<b>Total Population</b>	68,657	67,602	65,350	67,537	68,005	<b>337,151</b>
Hispanic or Latino of any Race	12,543	7,853	7,213	6,607	6,109	40,325
Non-Hispanic White	41,197	28,932	30,824	30,538	39,706	171,197
Non-Hispanic Asian	11,168	26,688	23,012	25,545	18,362	104,775
Non-Hispanic Black or African-American	1,026	1,045	1,082	1,310	710	5,173
All Other Non-Hispanic Races/Ethnicities	2,723	3,084	3,219	3,537	3,118	15,681
<b>Population 18 Years and Older</b>	51,839	49,715	50,426	53,280	56,391	<b>261,651</b>
Hispanic or Latino of any Race	8,542	5,293	5,073	4,749	4,874	28,531
Non-Hispanic White	32,446	22,525	25,379	25,332	33,081	138,763
Non-Hispanic Asian	8,565	19,542	17,249	19,971	15,735	81,062
Non-Hispanic Black or African-American	811	774	834	1,009	601	4,029
All Other Non-Hispanic Races/Ethnicities	1,475	1,581	1,891	2,219	2,100	9,266
<b>Citizen Voting Age Population (CVAP)</b>	50,644	44,570	50,582	45,490	53,057	<b>244,343</b>
Hispanic or Latino of any Race	6,593	4,568	4,832	4,656	6,764	27,413
Non-Hispanic White	32,329	19,404	26,910	24,296	32,571	135,510
Non-Hispanic Asian	9,180	17,843	16,566	13,602	11,540	68,731
Non-Hispanic Black or African-American	967	1,124	1,084	1,173	462	4,810
All Other Non-Hispanic Races/Ethnicities	1,575	1,631	1,190	1,763	1,720	7,879

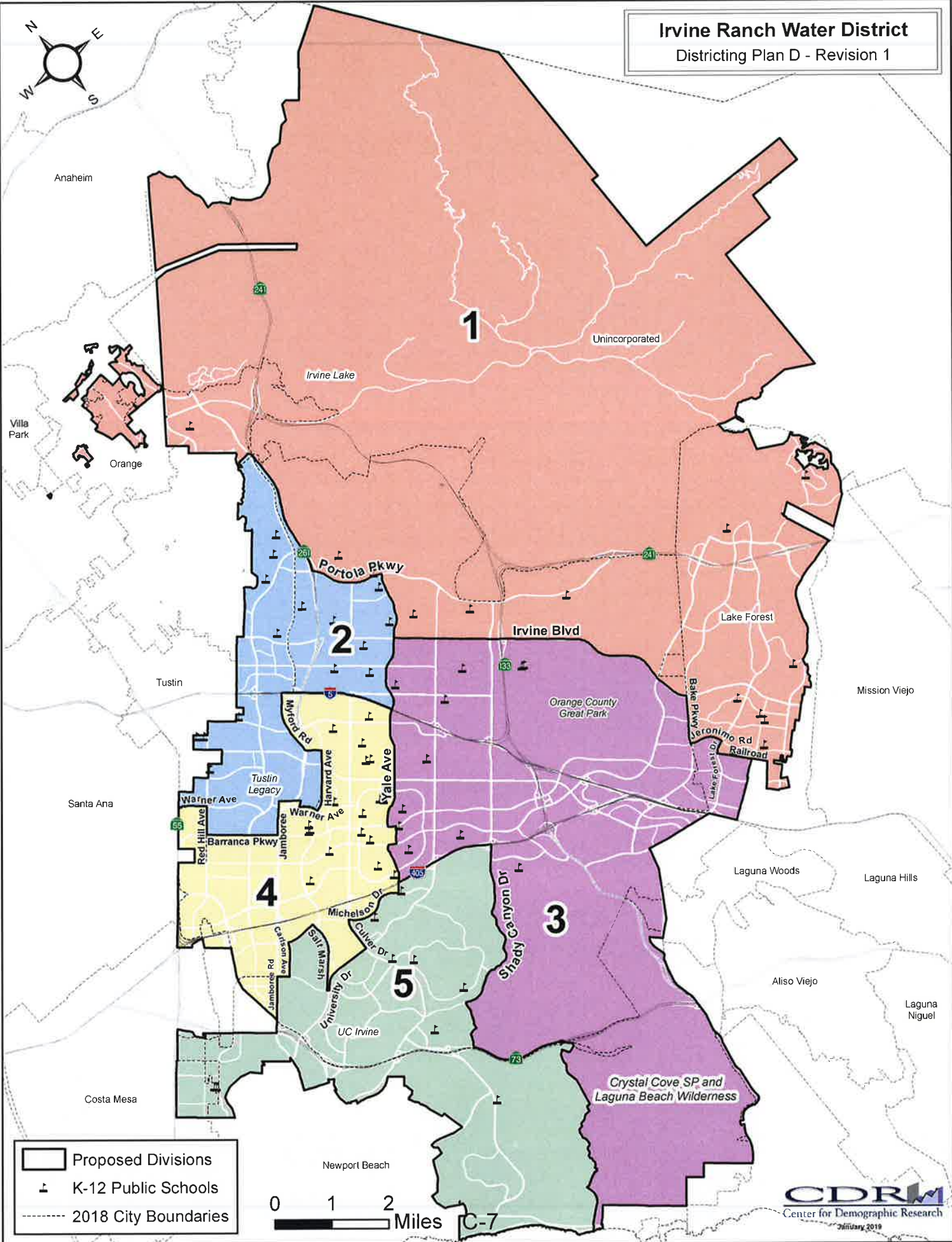
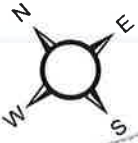
Target Division Population	67,430					
Division Difference from Target Population	1,227	172	-2,080	107	575	
Percent Difference from Target Population	1.82%	0.25%	-3.08%	0.16%	0.85%	
Percentage Spread	4.90%					

**Table 2. Share of Division Populations**

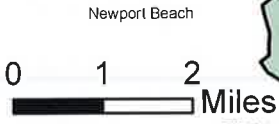
	DIVISION				
	1	2	3	4	5
<b>Total Population</b>	100.0%	100.0%	100.0%	100.0%	100.0%
Hispanic or Latino of any Race	18.3%	11.6%	11.0%	9.8%	9.0%
Non-Hispanic White	60.0%	42.8%	47.2%	45.2%	58.4%
Non-Hispanic Asian	16.3%	39.5%	35.2%	37.8%	27.0%
Non-Hispanic Black or African-American	1.5%	1.5%	1.7%	1.9%	1.0%
All Other Non-Hispanic Races/Ethnicities	4.0%	4.6%	4.9%	5.2%	4.6%
<b>Population 18 Years and Older</b>	100.0%	100.0%	100.0%	100.0%	100.0%
Hispanic or Latino of any Race	16.5%	10.6%	10.1%	8.9%	8.6%
Non-Hispanic White	62.6%	45.3%	50.3%	47.5%	58.7%
Non-Hispanic Asian	16.5%	39.3%	34.2%	37.5%	27.9%
Non-Hispanic Black or African-American	1.6%	1.6%	1.7%	1.9%	1.1%
All Other Non-Hispanic Races/Ethnicities	2.8%	3.2%	3.8%	4.2%	3.7%
<b>Citizen Voting Age Population (CVAP)</b>	100.0%	100.0%	100.0%	100.0%	100.0%
Hispanic or Latino of any Race	13.0%	10.2%	9.6%	10.2%	12.7%
Non-Hispanic White	63.8%	43.5%	53.2%	53.4%	61.4%
Non-Hispanic Asian	18.1%	40.0%	32.8%	29.9%	21.8%
Non-Hispanic Black or African-American	1.9%	2.5%	2.1%	2.6%	0.9%
All Other Non-Hispanic Races/Ethnicities	3.1%	3.7%	2.4%	3.9%	3.2%



**Irvine Ranch Water District**  
 Districting Plan D - Revision 1



Proposed Divisions  
 K-12 Public Schools  
 2018 City Boundaries



C-7

Irvine Ranch Water District- Plan D- Revision 1

**Table 1. Population by Division and Race/Ethnicity**

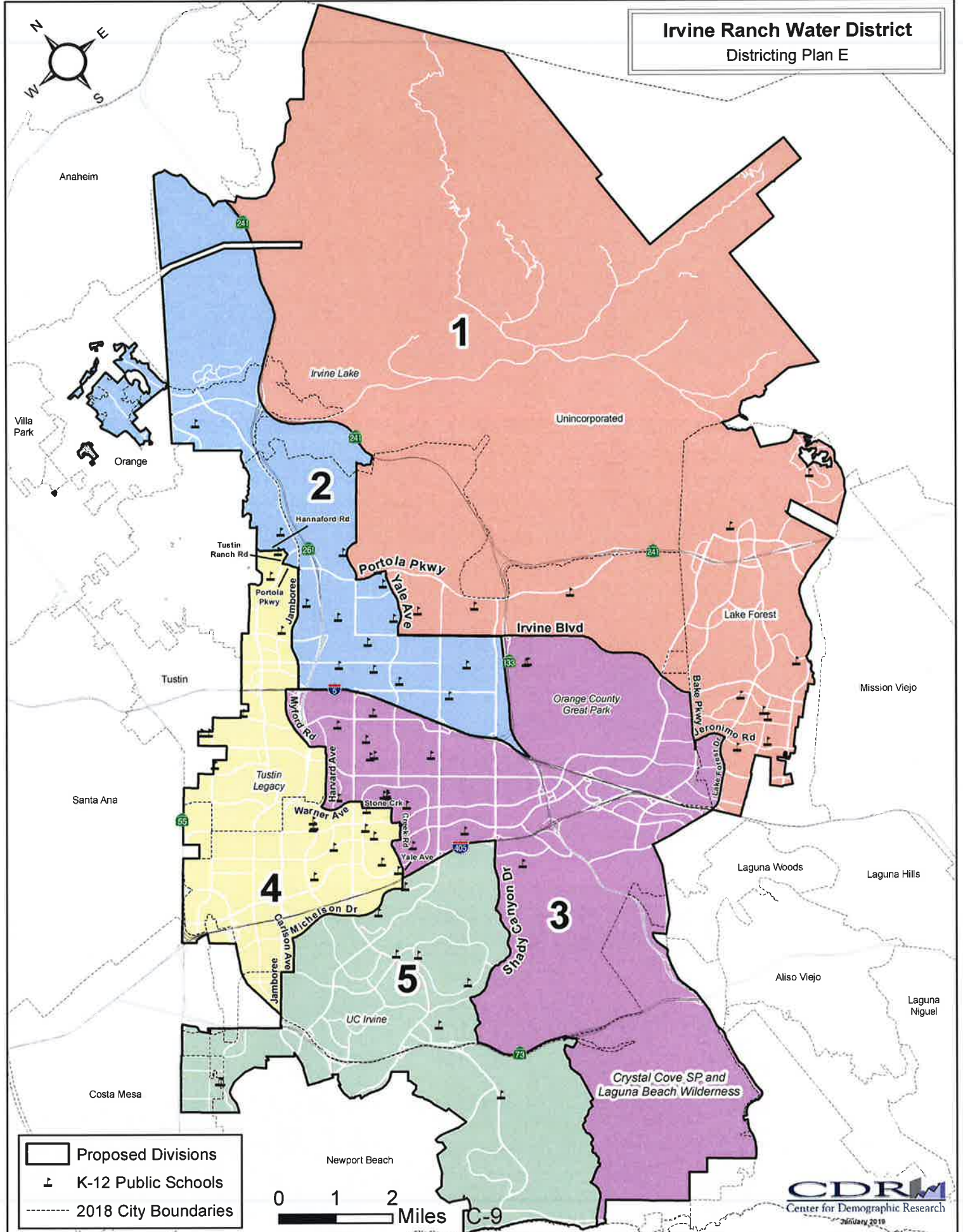
	DIVISION					Total
	1	2	3	4	5	
<b>Total Population</b>	68,657	67,602	65,350	67,534	68,008	<b>337,151</b>
Hispanic or Latino of any Race	12,543	7,853	7,213	6,607	6,109	40,325
Non-Hispanic White	41,197	28,932	30,824	30,535	39,709	171,197
Non-Hispanic Asian	11,168	26,688	23,012	25,545	18,362	104,775
Non-Hispanic Black or African-American	1,026	1,045	1,082	1,310	710	5,173
All Other Non-Hispanic Races/Ethnicities	2,723	3,084	3,219	3,537	3,118	15,681
<b>Population 18 Years and Older</b>	51,839	49,715	50,426	53,278	56,393	<b>261,651</b>
Hispanic or Latino of any Race	8,542	5,293	5,073	4,749	4,874	28,531
Non-Hispanic White	32,446	22,525	25,379	25,330	33,083	138,763
Non-Hispanic Asian	8,565	19,542	17,249	19,971	15,735	81,062
Non-Hispanic Black or African-American	811	774	834	1,009	601	4,029
All Other Non-Hispanic Races/Ethnicities	1,475	1,581	1,891	2,219	2,100	9,266
<b>Citizen Voting Age Population (CVAP)</b>	50,644	44,570	50,582	45,488	53,059	<b>244,343</b>
Hispanic or Latino of any Race	6,593	4,568	4,832	4,656	6,764	27,413
Non-Hispanic White	32,329	19,404	26,910	24,294	32,573	135,510
Non-Hispanic Asian	9,180	17,843	16,566	13,602	11,540	68,731
Non-Hispanic Black or African-American	967	1,124	1,084	1,173	462	4,810
All Other Non-Hispanic Races/Ethnicities	1,575	1,631	1,190	1,763	1,720	7,879

Target Division Population	67,430					
Division Difference from Target Population	1,227	172	-2,080	104	578	
Percent Difference from Target Population	1.82%	0.25%	-3.08%	0.15%	0.86%	
Percentage Spread	4.90%					

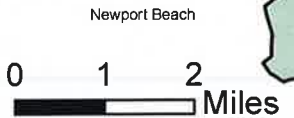
**Table 2. Share of Division Populations**

	DIVISION				
	1	2	3	4	5
<b>Total Population</b>	100.0%	100.0%	100.0%	100.0%	100.0%
Hispanic or Latino of any Race	18.3%	11.6%	11.0%	9.8%	9.0%
Non-Hispanic White	60.0%	42.8%	47.2%	45.2%	58.4%
Non-Hispanic Asian	16.3%	39.5%	35.2%	37.8%	27.0%
Non-Hispanic Black or African-American	1.5%	1.5%	1.7%	1.9%	1.0%
All Other Non-Hispanic Races/Ethnicities	4.0%	4.6%	4.9%	5.2%	4.6%
<b>Population 18 Years and Older</b>	100.0%	100.0%	100.0%	100.0%	100.0%
Hispanic or Latino of any Race	16.5%	10.6%	10.1%	8.9%	8.6%
Non-Hispanic White	62.6%	45.3%	50.3%	47.5%	58.7%
Non-Hispanic Asian	16.5%	39.3%	34.2%	37.5%	27.9%
Non-Hispanic Black or African-American	1.6%	1.6%	1.7%	1.9%	1.1%
All Other Non-Hispanic Races/Ethnicities	2.8%	3.2%	3.8%	4.2%	3.7%
<b>Citizen Voting Age Population (CVAP)</b>	100.0%	100.0%	100.0%	100.0%	100.0%
Hispanic or Latino of any Race	13.0%	10.2%	9.6%	10.2%	12.7%
Non-Hispanic White	63.8%	43.5%	53.2%	53.4%	61.4%
Non-Hispanic Asian	18.1%	40.0%	32.8%	29.9%	21.7%
Non-Hispanic Black or African-American	1.9%	2.5%	2.1%	2.6%	0.9%
All Other Non-Hispanic Races/Ethnicities	3.1%	3.7%	2.4%	3.9%	3.2%

# Irvine Ranch Water District Districting Plan E



Proposed Divisions  
 K-12 Public Schools  
 2018 City Boundaries



Irvine Ranch Water District- Plan E

**Table 1. Population by Division and Race/Ethnicity**

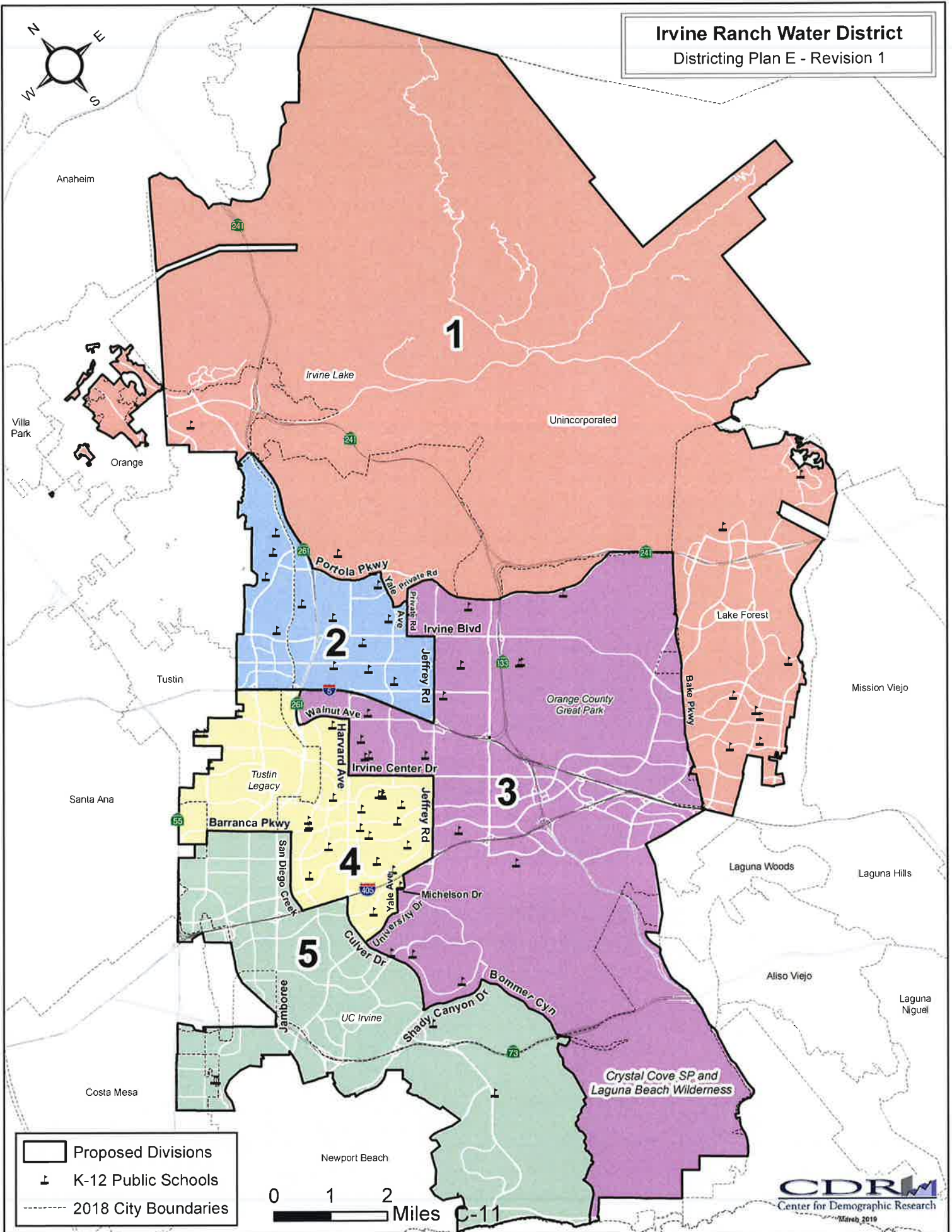
	DIVISION					Total
	1	2	3	4	5	
<b>Total Population</b>	66,378	67,029	65,115	68,908	69,721	<b>337,151</b>
Hispanic or Latino of any Race	13,083	6,186	5,997	8,839	6,220	40,325
Non-Hispanic White	38,945	28,934	31,021	31,496	40,801	171,197
Non-Hispanic Asian	10,662	27,676	23,955	23,684	18,798	104,775
Non-Hispanic Black or African-American	1,030	1,028	976	1,411	728	5,173
All Other Non-Hispanic Races/Ethnicities	2,658	3,205	3,166	3,478	3,174	15,681
<b>Population 18 Years and Older</b>	50,065	49,292	49,901	54,461	57,932	<b>261,651</b>
Hispanic or Latino of any Race	8,863	4,224	4,239	6,239	4,966	28,531
Non-Hispanic White	30,749	22,583	25,149	26,174	34,108	138,763
Non-Hispanic Asian	8,188	20,133	17,932	18,717	16,092	81,062
Non-Hispanic Black or African-American	816	747	746	1,101	619	4,029
All Other Non-Hispanic Races/Ethnicities	1,449	1,605	1,835	2,230	2,147	9,266
<b>Citizen Voting Age Population (CVAP)</b>	48,305	48,274	46,449	47,060	54,255	<b>244,343</b>
Hispanic or Latino of any Race	6,133	4,422	4,395	5,578	6,885	27,413
Non-Hispanic White	31,135	21,206	25,410	24,356	33,403	135,510
Non-Hispanic Asian	8,528	20,090	14,241	14,136	11,736	68,731
Non-Hispanic Black or African-American	1,102	1,225	940	1,061	482	4,810
All Other Non-Hispanic Races/Ethnicities	1,407	1,331	1,463	1,929	1,749	7,879
Target Division Population	67,430					
Division Difference from Target Population	-1,052	-401	-2,315	1,478	2,291	
Percent Difference from Target Population	-1.56%	-0.59%	-3.43%	2.19%	3.40%	
Percentage Spread	6.83%					

**Table 2. Share of Division Populations**

	DIVISION				
	1	2	3	4	5
<b>Total Population</b>	100.0%	100.0%	100.0%	100.0%	100.0%
Hispanic or Latino of any Race	19.7%	9.2%	9.2%	12.8%	8.9%
Non-Hispanic White	58.7%	43.2%	47.6%	45.7%	58.5%
Non-Hispanic Asian	16.1%	41.3%	36.8%	34.4%	27.0%
Non-Hispanic Black or African-American	1.6%	1.5%	1.5%	2.0%	1.0%
All Other Non-Hispanic Races/Ethnicities	4.0%	4.8%	4.9%	5.0%	4.6%
<b>Population 18 Years and Older</b>	100.0%	100.0%	100.0%	100.0%	100.0%
Hispanic or Latino of any Race	17.7%	8.6%	8.5%	11.5%	8.6%
Non-Hispanic White	61.4%	45.8%	50.4%	48.1%	58.9%
Non-Hispanic Asian	16.4%	40.8%	35.9%	34.4%	27.8%
Non-Hispanic Black or African-American	1.6%	1.5%	1.5%	2.0%	1.1%
All Other Non-Hispanic Races/Ethnicities	2.9%	3.3%	3.7%	4.1%	3.7%
<b>Citizen Voting Age Population (CVAP)</b>	100.0%	100.0%	100.0%	100.0%	100.0%
Hispanic or Latino of any Race	12.7%	9.2%	9.5%	11.9%	12.7%
Non-Hispanic White	64.5%	43.9%	54.7%	51.8%	61.6%
Non-Hispanic Asian	17.7%	41.6%	30.7%	30.0%	21.6%
Non-Hispanic Black or African-American	2.3%	2.5%	2.0%	2.3%	0.9%
All Other Non-Hispanic Races/Ethnicities	2.9%	2.8%	3.1%	4.1%	3.2%

# Irvine Ranch Water District

Districting Plan E - Revision 1



Irvine Ranch Water District- Plan E- Revision 1

**Table 1. Population by Division and Race/Ethnicity**

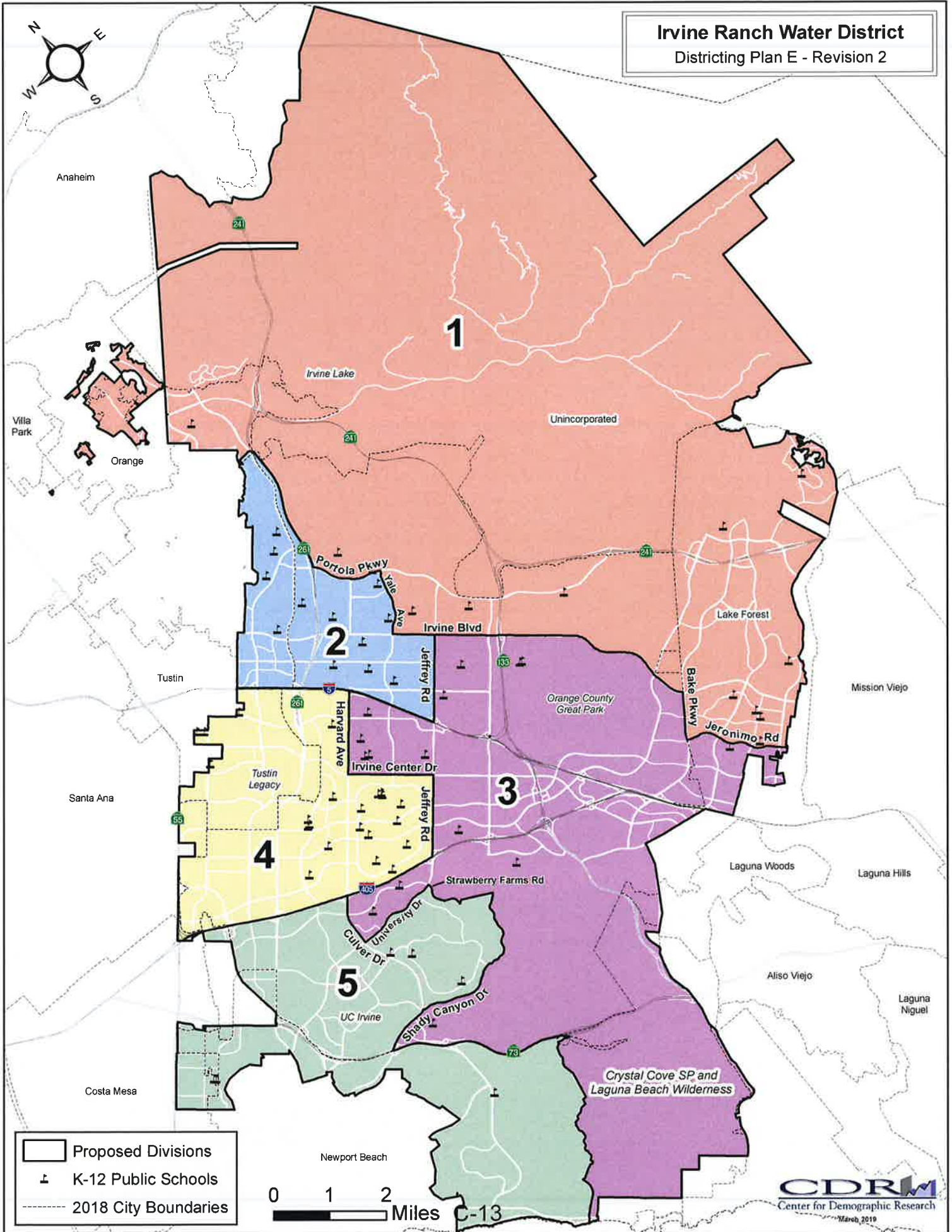
	DIVISION					Total
	1	2	3	4	5	
<b>Total Population</b>	70,011	68,796	65,507	67,933	64,904	<b>337,151</b>
Hispanic or Latino of any Race	13,445	7,069	5,925	7,334	6,552	40,325
Non-Hispanic White	42,386	30,048	30,477	31,889	36,397	171,197
Non-Hispanic Asian	10,444	27,207	25,081	24,088	17,955	104,775
Non-Hispanic Black or African-American	1,016	1,180	947	1,090	940	5,173
All Other Non-Hispanic Races/Ethnicities	2,720	3,292	3,077	3,532	3,060	15,681
<b>Population 18 Years and Older</b>	52,707	50,833	50,938	52,043	55,130	<b>261,651</b>
Hispanic or Latino of any Race	9,005	4,779	4,408	5,031	5,308	28,531
Non-Hispanic White	33,403	23,585	25,220	25,759	30,796	138,763
Non-Hispanic Asian	8,060	19,909	18,760	18,340	15,993	81,062
Non-Hispanic Black or African-American	798	869	761	797	804	4,029
All Other Non-Hispanic Races/Ethnicities	1,441	1,691	1,789	2,116	2,229	9,266
<b>Citizen Voting Age Population (CVAP)</b>	50,306	48,026	49,422	44,771	51,818	<b>244,343</b>
Hispanic or Latino of any Race	6,559	4,693	4,454	4,594	7,113	27,413
Non-Hispanic White	33,428	20,985	25,517	24,721	30,859	135,510
Non-Hispanic Asian	7,779	19,544	16,991	13,093	11,324	68,731
Non-Hispanic Black or African-American	1,088	1,244	909	663	906	4,810
All Other Non-Hispanic Races/Ethnicities	1,452	1,560	1,551	1,700	1,616	7,879
Target Division Population	67,430					
Division Difference from Target Population	2,581	1,366	-1,923	503	-2,526	
Percent Difference from Target Population	3.83%	2.03%	-2.85%	0.75%	-3.75%	
Percentage Spread	7.57%					

**Table 2. Share of Division Populations**

	DIVISION				
	1	2	3	4	5
<b>Total Population</b>	100.0%	100.0%	100.0%	100.0%	100.0%
Hispanic or Latino of any Race	19.2%	10.3%	9.0%	10.8%	10.1%
Non-Hispanic White	60.5%	43.7%	46.5%	46.9%	56.1%
Non-Hispanic Asian	14.9%	39.5%	38.3%	35.5%	27.7%
Non-Hispanic Black or African-American	1.5%	1.7%	1.4%	1.6%	1.4%
All Other Non-Hispanic Races/Ethnicities	3.9%	4.8%	4.7%	5.2%	4.7%
<b>Population 18 Years and Older</b>	100.0%	100.0%	100.0%	100.0%	100.0%
Hispanic or Latino of any Race	17.1%	9.4%	8.7%	9.7%	9.6%
Non-Hispanic White	63.4%	46.4%	49.5%	49.5%	55.9%
Non-Hispanic Asian	15.3%	39.2%	36.8%	35.2%	29.0%
Non-Hispanic Black or African-American	1.5%	1.7%	1.5%	1.5%	1.5%
All Other Non-Hispanic Races/Ethnicities	2.7%	3.3%	3.5%	4.1%	4.0%
<b>Citizen Voting Age Population (CVAP)</b>	100.0%	100.0%	100.0%	100.0%	100.0%
Hispanic or Latino of any Race	13.0%	9.8%	9.0%	10.3%	13.7%
Non-Hispanic White	66.4%	43.7%	51.6%	55.2%	59.6%
Non-Hispanic Asian	15.5%	40.7%	34.4%	29.2%	21.9%
Non-Hispanic Black or African-American	2.2%	2.6%	1.8%	1.5%	1.7%
All Other Non-Hispanic Races/Ethnicities	2.9%	3.2%	3.1%	3.8%	3.1%

# Irvine Ranch Water District

Districting Plan E - Revision 2



Irvine Ranch Water District- Plan E-Revision 2

**Table 1. Population by Division and Race/Ethnicity**

	DIVISION					Total
	1	2	3	4	5	
<b>Total Population</b>	65,531	67,021	66,202	69,195	69,202	<b>337,151</b>
Hispanic or Latino of any Race	11,310	6,870	7,958	7,627	6,560	40,325
Non-Hispanic White	39,723	29,069	31,455	31,427	39,523	171,197
Non-Hispanic Asian	10,843	26,733	22,801	25,391	19,007	104,775
Non-Hispanic Black or African-American	1,003	1,147	939	1,177	907	5,173
All Other Non-Hispanic Races/Ethnicities	2,652	3,202	3,049	3,573	3,205	15,681
<b>Population 18 Years and Older</b>	49,405	49,390	51,356	53,018	58,482	<b>261,651</b>
Hispanic or Latino of any Race	7,716	4,622	5,635	5,259	5,299	28,531
Non-Hispanic White	31,167	22,750	25,975	25,381	33,490	138,763
Non-Hispanic Asian	8,296	19,540	17,220	19,364	16,642	81,062
Non-Hispanic Black or African-American	793	845	734	882	775	4,029
All Other Non-Hispanic Races/Ethnicities	1,433	1,633	1,792	2,132	2,276	9,266
<b>Citizen Voting Age Population (CVAP)</b>	48,698	46,786	47,761	46,099	54,999	<b>244,343</b>
Hispanic or Latino of any Race	6,146	4,562	4,656	4,707	7,342	27,413
Non-Hispanic White	31,176	20,384	26,419	24,548	32,983	135,510
Non-Hispanic Asian	8,940	19,138	14,440	14,207	12,006	68,731
Non-Hispanic Black or African-American	925	1,208	1,009	820	848	4,810
All Other Non-Hispanic Races/Ethnicities	1,511	1,494	1,237	1,817	1,820	7,879
Target Division Population	67,430					
Division Difference from Target Population	-1,899	-409	-1,228	1,765	1,772	
Percent Difference from Target Population	-2.82%	-0.61%	-1.82%	2.62%	2.63%	
Percentage Spread	5.44%					

**Table 2. Share of Division Populations**

	DIVISION				
	1	2	3	4	5
<b>Total Population</b>	100.0%	100.0%	100.0%	100.0%	100.0%
Hispanic or Latino of any Race	17.3%	10.3%	12.0%	11.0%	9.5%
Non-Hispanic White	60.6%	43.4%	47.5%	45.4%	57.1%
Non-Hispanic Asian	16.5%	39.9%	34.4%	36.7%	27.5%
Non-Hispanic Black or African-American	1.5%	1.7%	1.4%	1.7%	1.3%
All Other Non-Hispanic Races/Ethnicities	4.0%	4.8%	4.6%	5.2%	4.6%
<b>Population 18 Years and Older</b>	100.0%	100.0%	100.0%	100.0%	100.0%
Hispanic or Latino of any Race	15.6%	9.4%	11.0%	9.9%	9.1%
Non-Hispanic White	63.1%	46.1%	50.6%	47.9%	57.3%
Non-Hispanic Asian	16.8%	39.6%	33.5%	36.5%	28.5%
Non-Hispanic Black or African-American	1.6%	1.7%	1.4%	1.7%	1.3%
All Other Non-Hispanic Races/Ethnicities	2.9%	3.3%	3.5%	4.0%	3.9%
<b>Citizen Voting Age Population (CVAP)</b>	100.0%	100.0%	100.0%	100.0%	100.0%
Hispanic or Latino of any Race	12.6%	9.8%	9.7%	10.2%	13.3%
Non-Hispanic White	64.0%	43.6%	55.3%	53.3%	60.0%
Non-Hispanic Asian	18.4%	40.9%	30.2%	30.8%	21.8%
Non-Hispanic Black or African-American	1.9%	2.6%	2.1%	1.8%	1.5%
All Other Non-Hispanic Races/Ethnicities	3.1%	3.2%	2.6%	3.9%	3.3%