

Existing Conditions for Irvine Ranch Water District

Table 1. Population by Race/Ethnicity for IRWD

	Number	Percent
2010 Total Population	337,151	100.0%
Hispanic or Latino of any Race	40,325	12.0%
Non-Hispanic White	171,195	50.8%
Non-Hispanic Asian	104,775	31.1%
Non-Hispanic Black or African-American	5,173	1.5%
All Other Non-Hispanic Races/Ethnicities	15,681	4.7%
2010 Population 18 Years and Older	261,651	100.0%
Hispanic or Latino of any Race	28,531	10.9%
Non-Hispanic White	138,759	53.0%
Non-Hispanic Asian	81,062	31.0%
Non-Hispanic Black or African-American	4,029	1.5%
All Other Non-Hispanic Races/Ethnicities	9,266	3.5%
2016 Citizen Voting Age Population (CVAP)	244,343	100.0%
Hispanic or Latino of any Race	27,413	11.2%
Non-Hispanic White	135,507	55.5%
Non-Hispanic Asian	68,731	28.1%
Non-Hispanic Black or African-American	4,810	2.0%
All Other Non-Hispanic Races/Ethnicities	7,879	3.2%

Sources: 2010 Decennial Census P.L. 94-171 Redistricting Data;

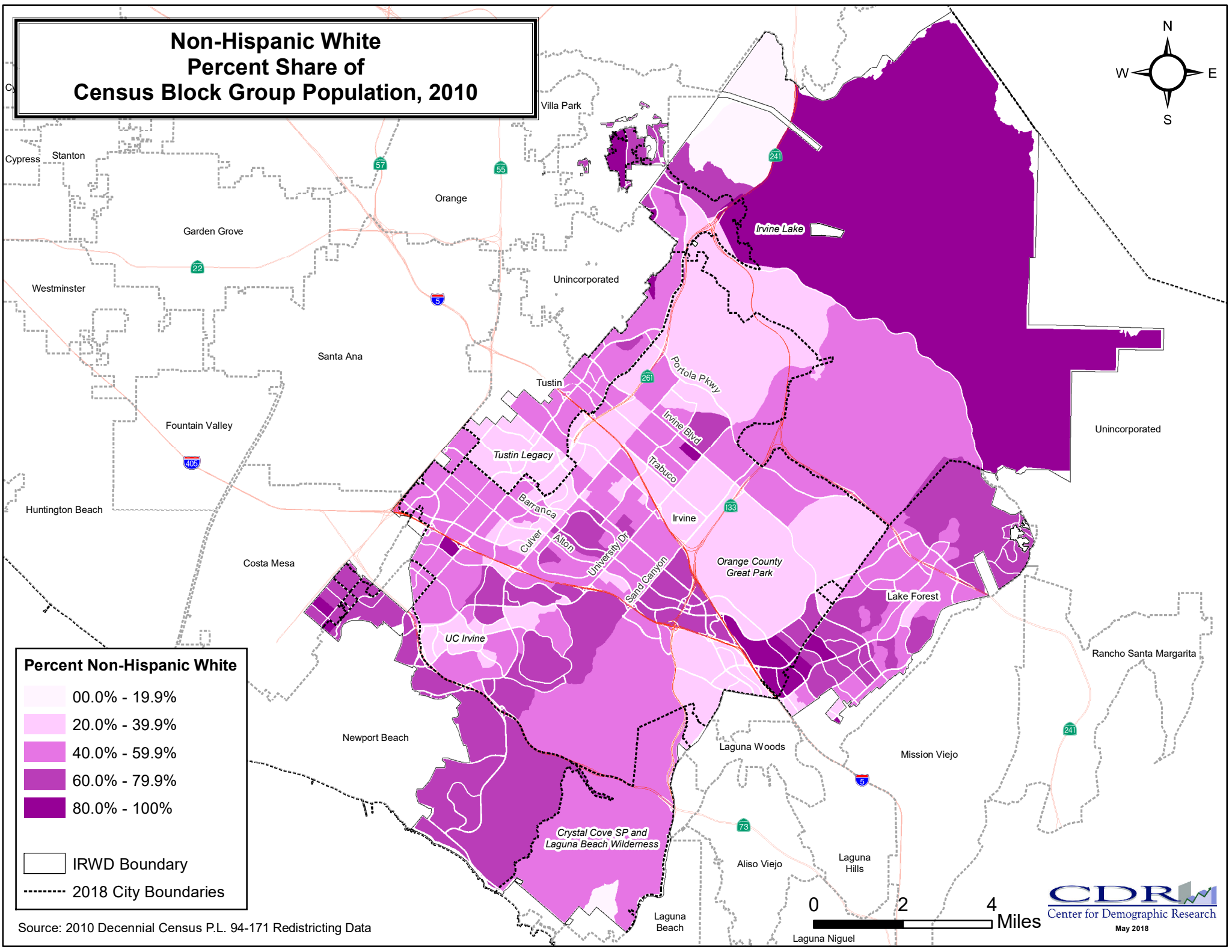
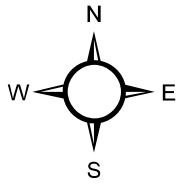
U.S. Census Bureau American Community Survey 5-year estimates, 2012-2016

The target director division population is calculated by dividing the total population by the number of board members.

Table 2. Target Population for Division Scenarios

Division ID	Division Type	Total 2010 Population	Target Population for Each Division	Division Majority (50% + 1)	Majority of CVAP (50% +1)
5	5-Division Plan	337,151	67,430	33,716	24,435

Non-Hispanic White Percent Share of Census Block Group Population, 2010

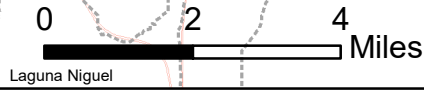


Percent Non-Hispanic White

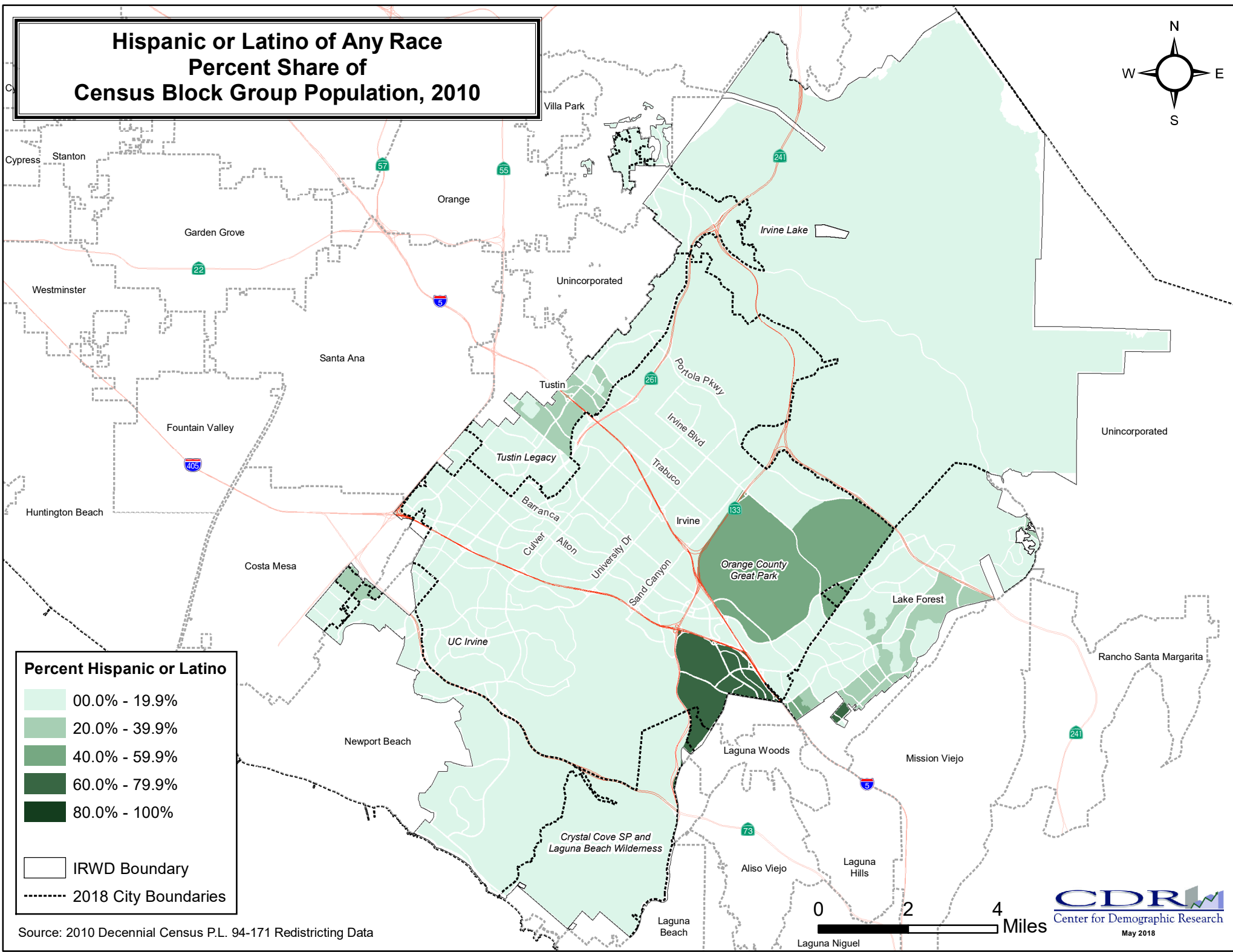
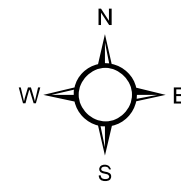
- 00.0% - 19.9%
- 20.0% - 39.9%
- 40.0% - 59.9%
- 60.0% - 79.9%
- 80.0% - 100%

IRWD Boundary
 2018 City Boundaries

Source: 2010 Decennial Census P.L. 94-171 Redistricting Data



Hispanic or Latino of Any Race Percent Share of Census Block Group Population, 2010



Percent Hispanic or Latino

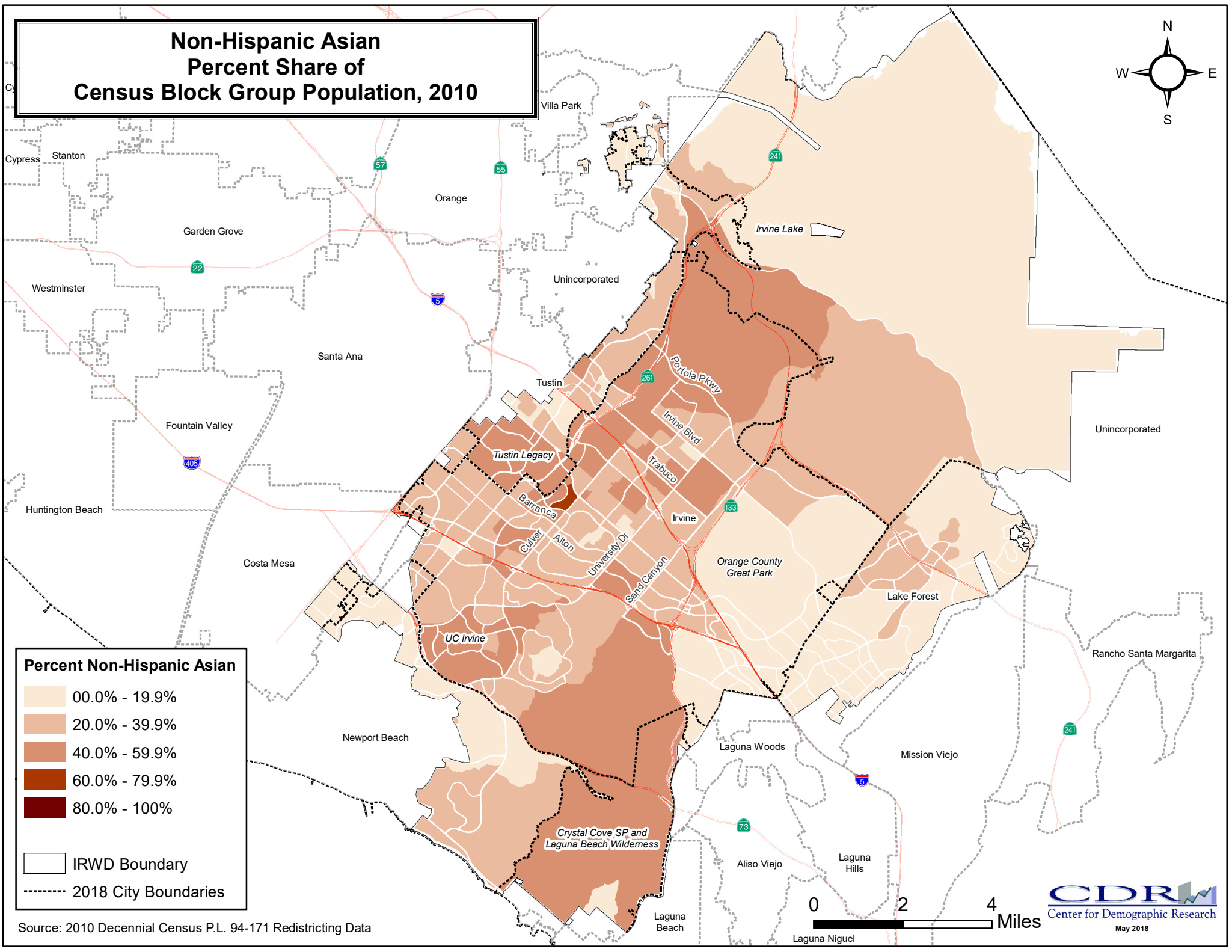
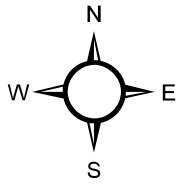
	00.0% - 19.9%
	20.0% - 39.9%
	40.0% - 59.9%
	60.0% - 79.9%
	80.0% - 100%

IRWD Boundary
 2018 City Boundaries

Source: 2010 Decennial Census P.L. 94-171 Redistricting Data



Non-Hispanic Asian Percent Share of Census Block Group Population, 2010

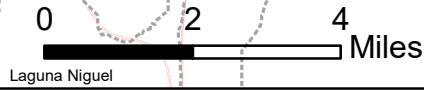


Percent Non-Hispanic Asian

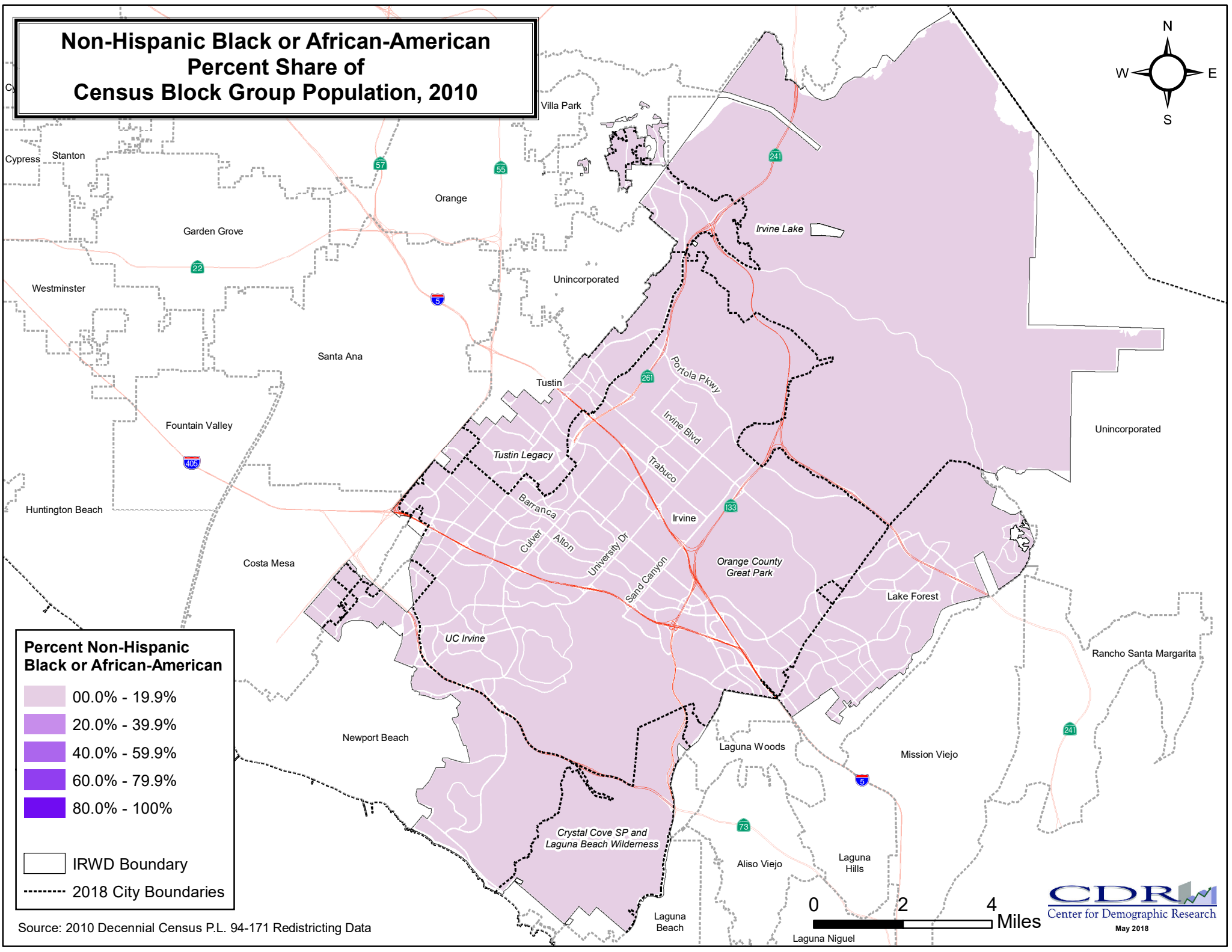
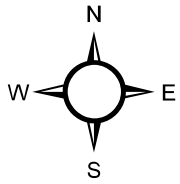
	00.0% - 19.9%
	20.0% - 39.9%
	40.0% - 59.9%
	60.0% - 79.9%
	80.0% - 100%

IRWD Boundary
 2018 City Boundaries

Source: 2010 Decennial Census P.L. 94-171 Redistricting Data



Non-Hispanic Black or African-American Percent Share of Census Block Group Population, 2010



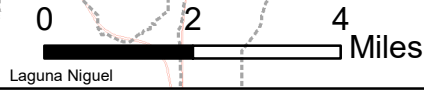
Percent Non-Hispanic Black or African-American

- 00.0% - 19.9%
- 20.0% - 39.9%
- 40.0% - 59.9%
- 60.0% - 79.9%
- 80.0% - 100%

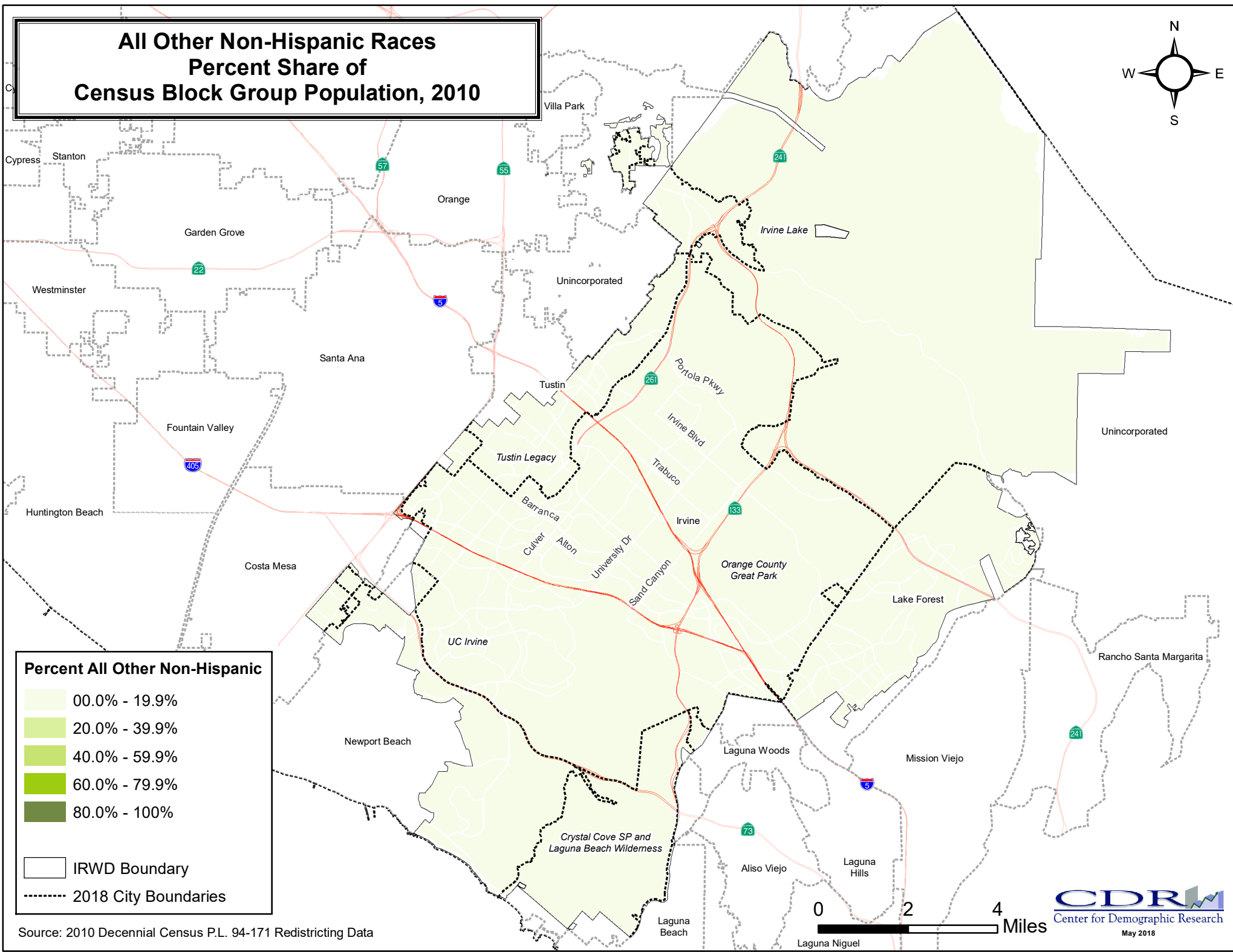
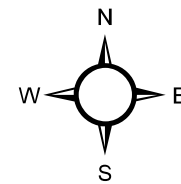
IRWD Boundary

2018 City Boundaries

Source: 2010 Decennial Census P.L. 94-171 Redistricting Data



All Other Non-Hispanic Races Percent Share of Census Block Group Population, 2010

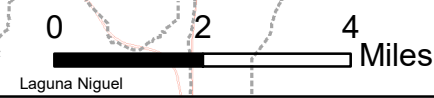


Percent All Other Non-Hispanic

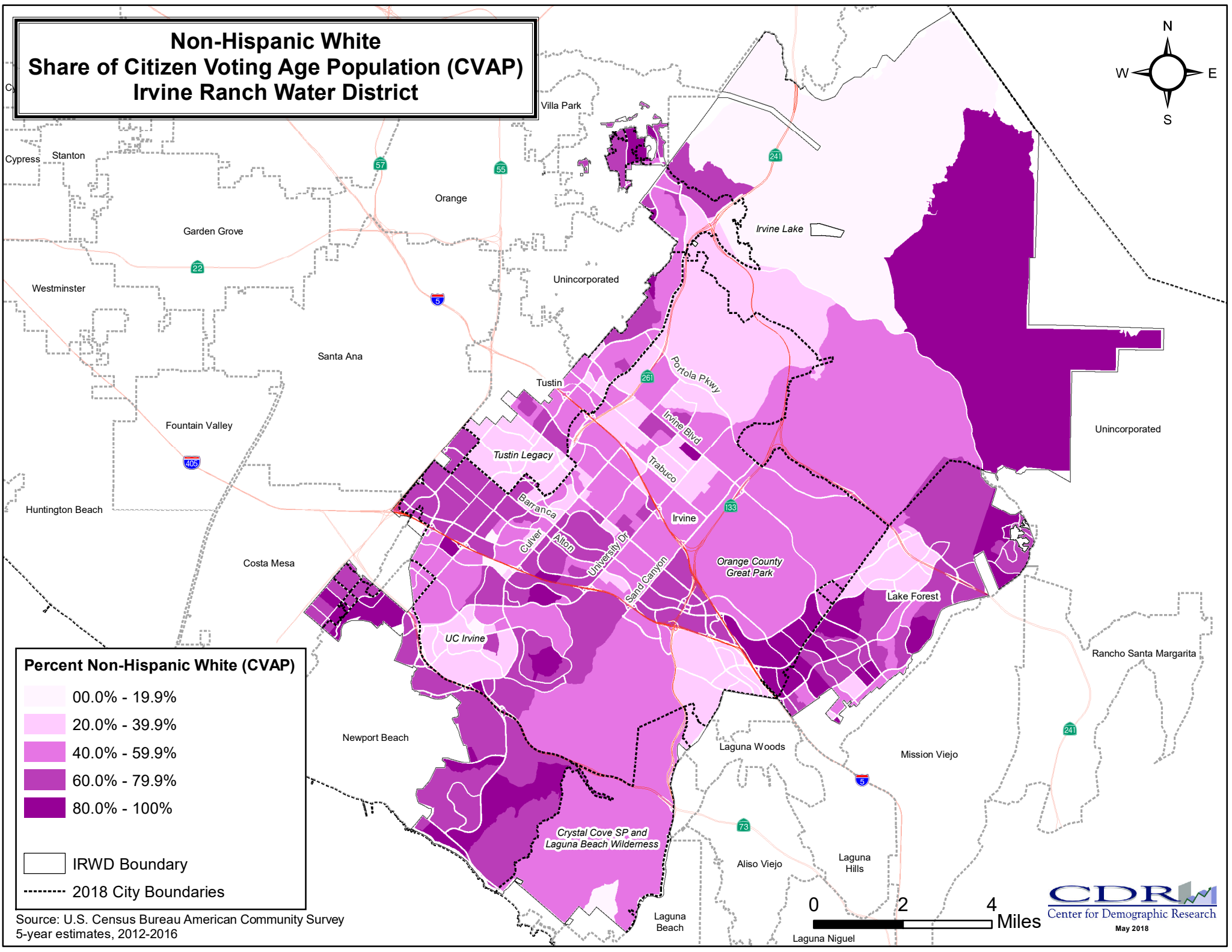
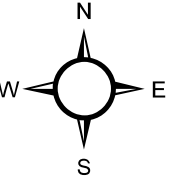
- 00.0% - 19.9%
- 20.0% - 39.9%
- 40.0% - 59.9%
- 60.0% - 79.9%
- 80.0% - 100%

IRWD Boundary
 2018 City Boundaries

Source: 2010 Decennial Census P.L. 94-171 Redistricting Data



Non-Hispanic White Share of Citizen Voting Age Population (CVAP) Irvine Ranch Water District



Percent Non-Hispanic White (CVAP)

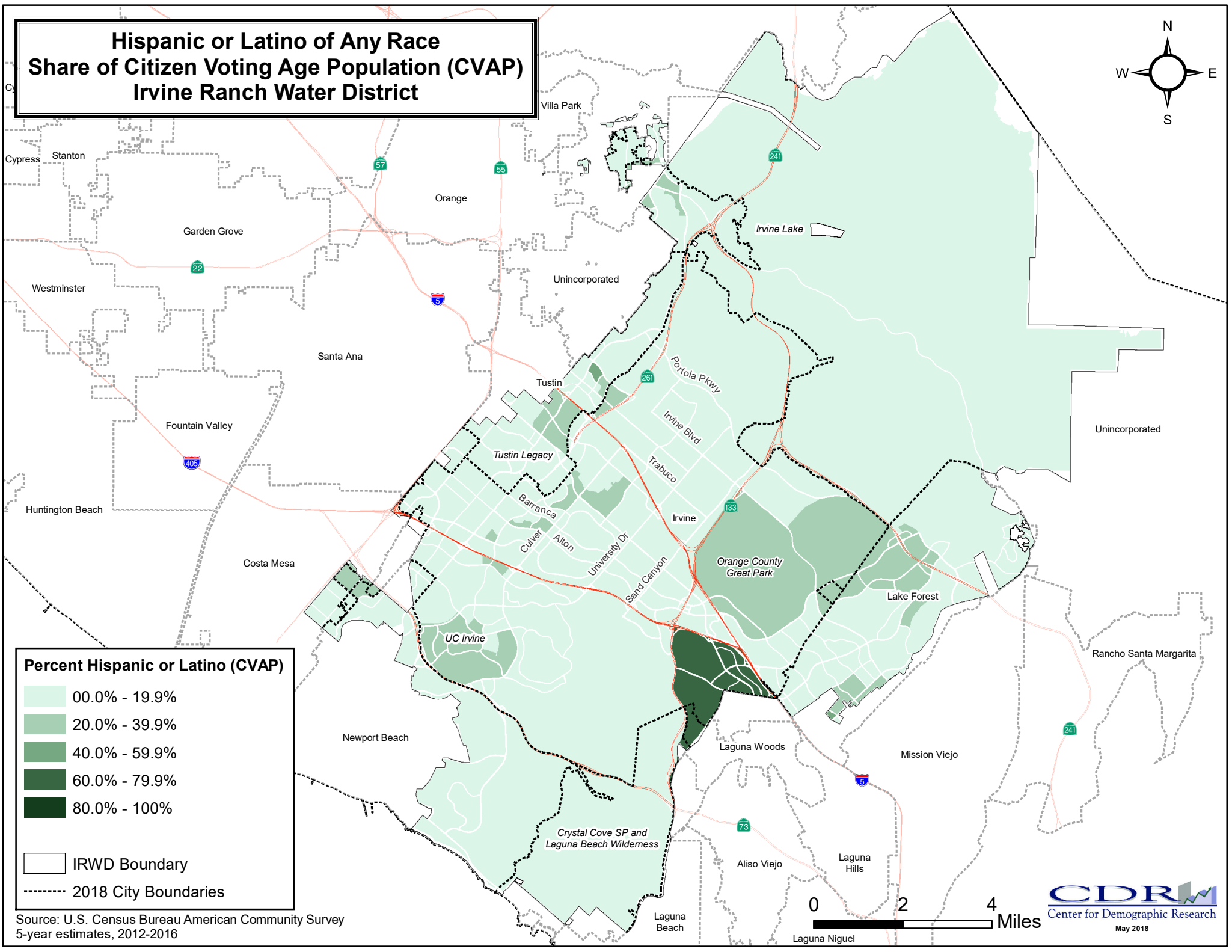
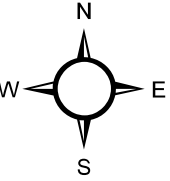
- 00.0% - 19.9%
- 20.0% - 39.9%
- 40.0% - 59.9%
- 60.0% - 79.9%
- 80.0% - 100%

IRWD Boundary
 2018 City Boundaries

Source: U.S. Census Bureau American Community Survey
5-year estimates, 2012-2016



Hispanic or Latino of Any Race Share of Citizen Voting Age Population (CVAP) Irvine Ranch Water District



Percent Hispanic or Latino (CVAP)

- 00.0% - 19.9%
- 20.0% - 39.9%
- 40.0% - 59.9%
- 60.0% - 79.9%
- 80.0% - 100%

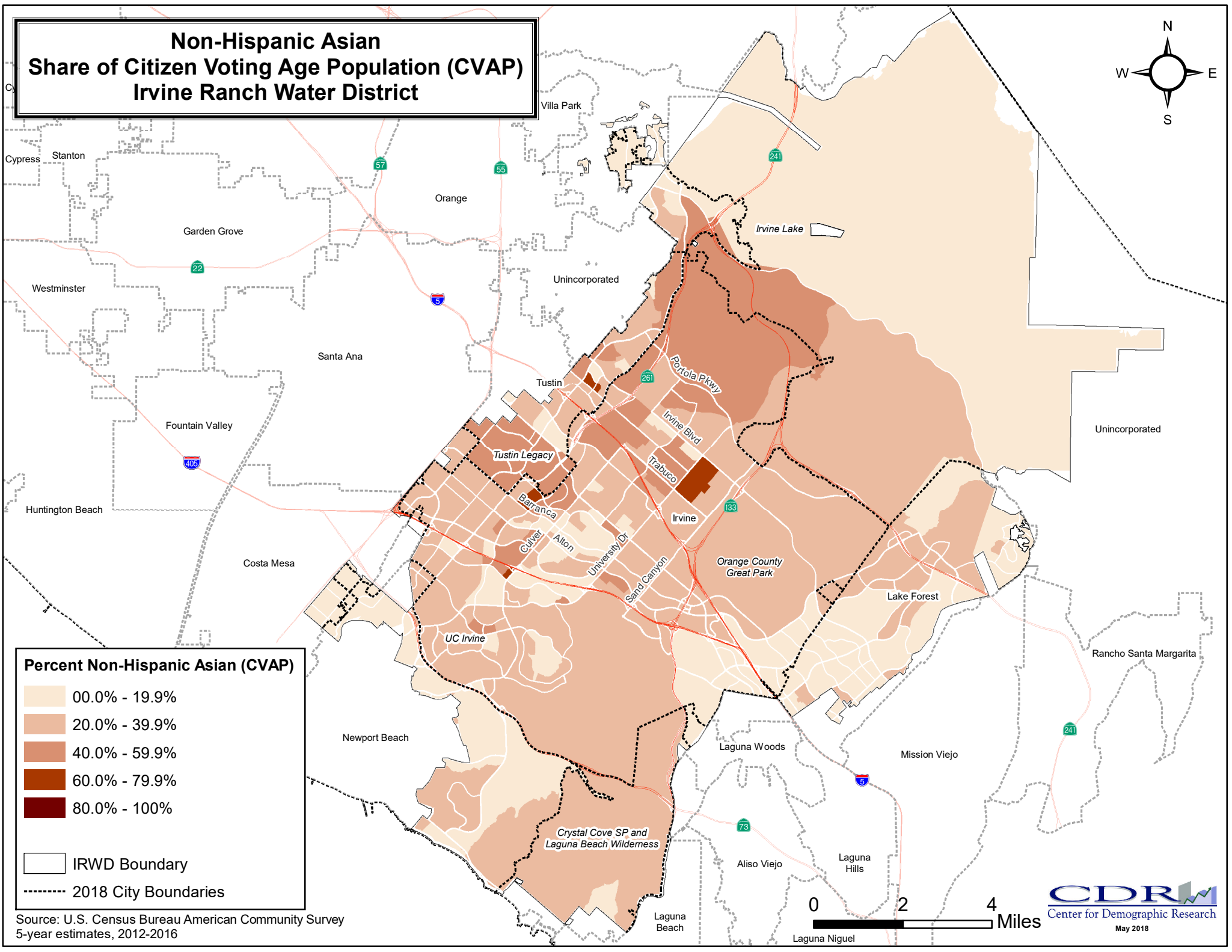
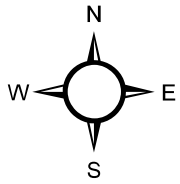
IRWD Boundary

2018 City Boundaries

Source: U.S. Census Bureau American Community Survey
5-year estimates, 2012-2016



Non-Hispanic Asian Share of Citizen Voting Age Population (CVAP) Irvine Ranch Water District



Percent Non-Hispanic Asian (CVAP)

- 00.0% - 19.9%
- 20.0% - 39.9%
- 40.0% - 59.9%
- 60.0% - 79.9%
- 80.0% - 100%

IRWD Boundary

2018 City Boundaries

Source: U.S. Census Bureau American Community Survey
5-year estimates, 2012-2016

