

Create five divisions with as nearly equal populations as possible. The goal is to have approximately 67,430 people for each division. Generally, each division's population should approximately be between 64,059 and 70,802 people. You may use a thick, black or blue marker to draw the proposed division boundaries on the map.

Submissions may be sent to:
 Leslie Bonkowski, District Secretary
 Irvine Ranch Water District
 Email: comments@irwd.com OR
 15600 Sand Canyon Avenue
 Irvine, CA 92618

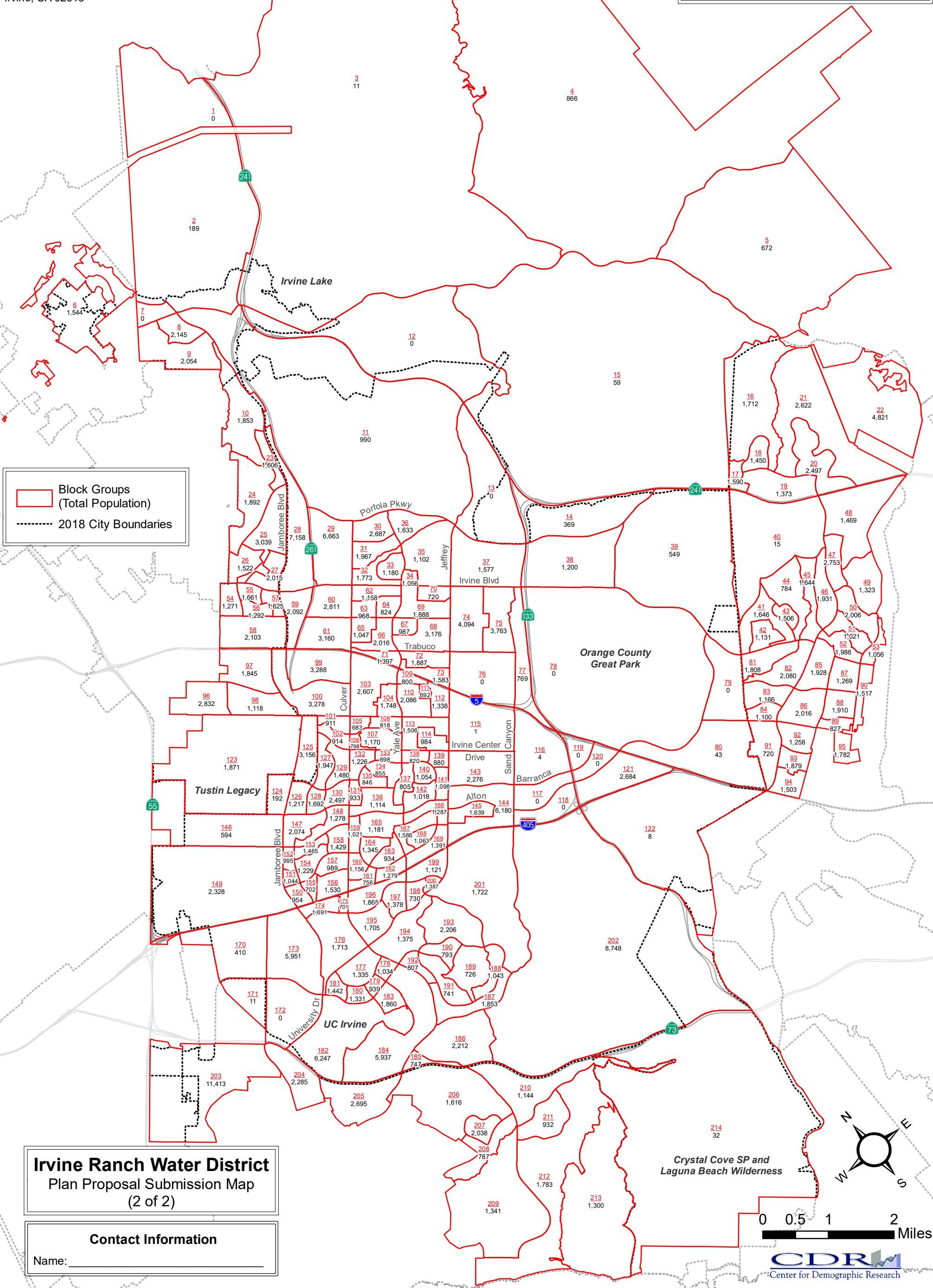
Irvine Ranch Water District Plan Proposal Submission Map (1 of 2)

Contact Information

Name: _____

Email: _____

Phone: _____



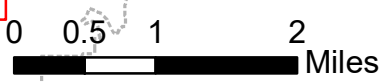
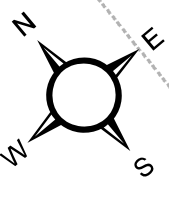
Block Groups
(Total Population)

2018 City Boundaries

Irvine Ranch Water District Plan Proposal Submission Map (2 of 2)

Contact Information

Name: _____



Create five divisions with as nearly equal populations as possible. The goal is to have approximately 67,430 people for each division. Generally, each division's population should approximately be between 64,059 and 70,802 people. You may use a thick, black or blue marker to draw the proposed division boundaries on the map.

Submissions may be sent to:
 Leslie Bonkowski, District Secretary
 Irvine Ranch Water District
 Email: comments@irwd.com OR
 15600 Sand Canyon Avenue
 Irvine, CA 92618

Irvine Ranch Water District

Plan Proposal Submission Map

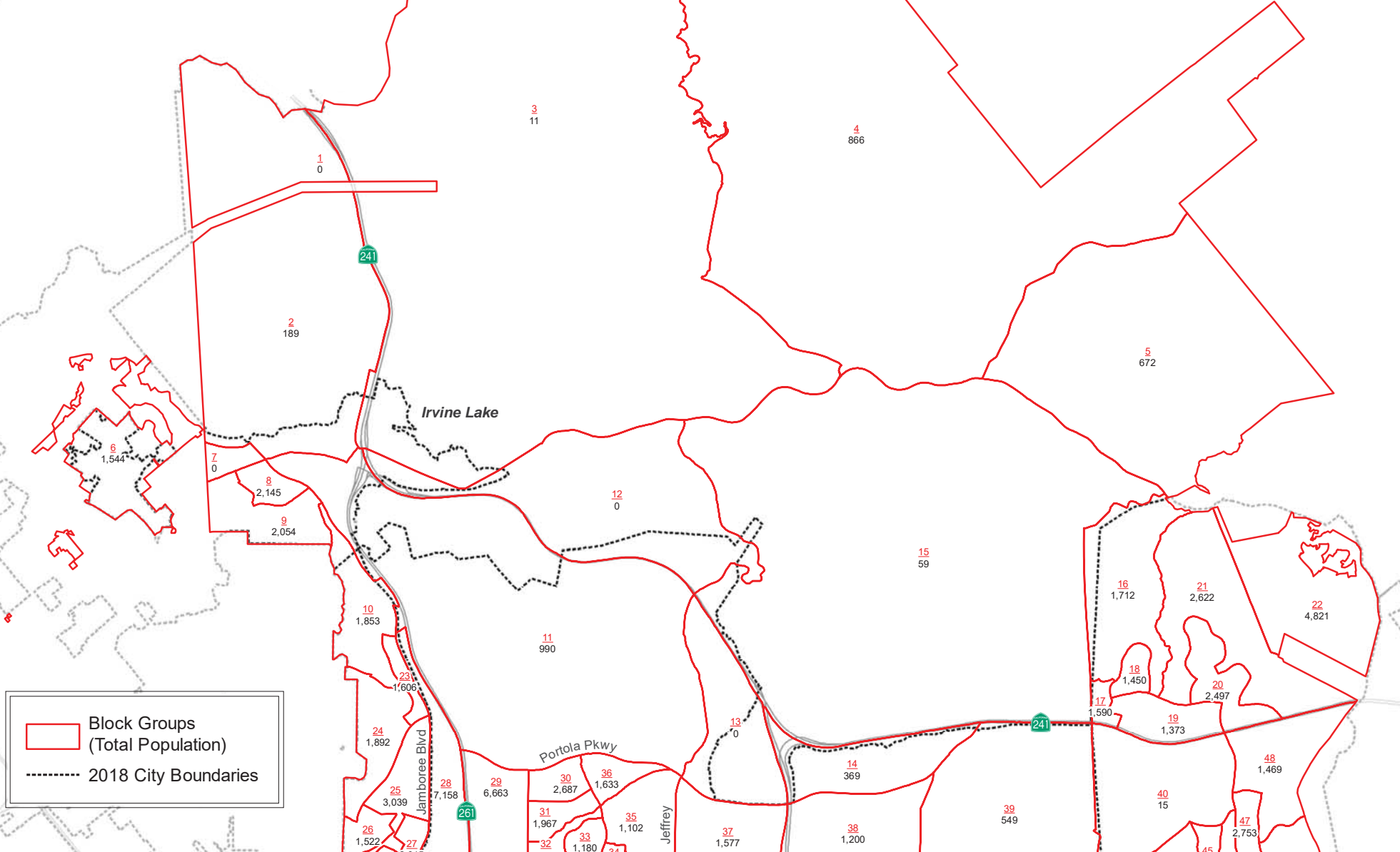
(1 of 2)

Contact Information

Name: _____

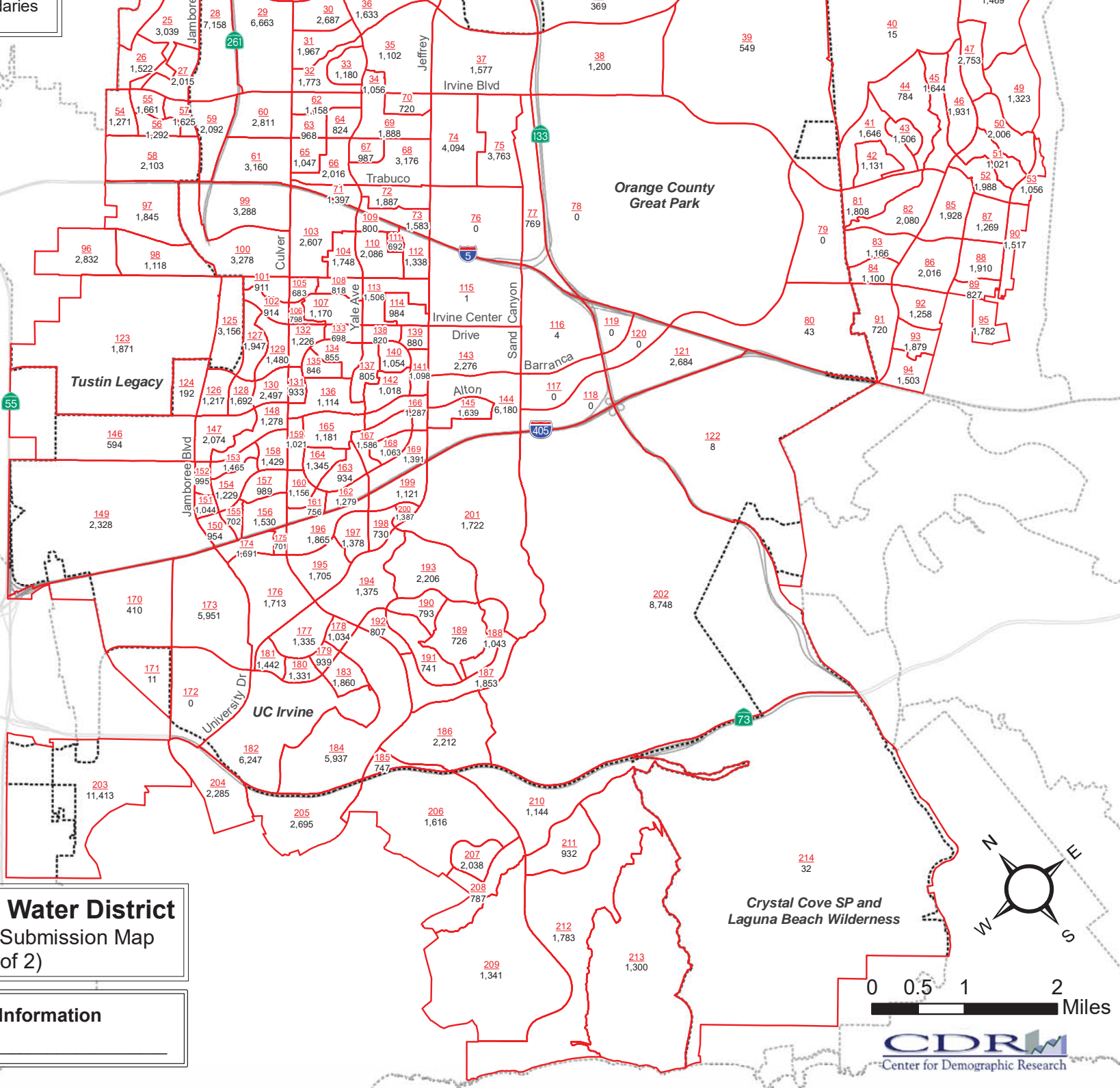
Email: _____

Phone: _____



Block Groups (Total Population)
 2018 City Boundaries

----- 2018 City Boundaries



Irvine Ranch Water District
 Plan Proposal Submission Map
 (2 of 2)

Contact Information
 Name: _____

