



KERN FAN GROUNDWATER STORAGE PROJECT

August 5, 2020

INTRODUCTION TO ROSEDALE AND IRWD



Rosedale-Rio Bravo Water Storage District (Rosedale)

Established in 1959

Provides water replenishment to over 27,500 acres of irrigated agricultural lands. A CVP water user.



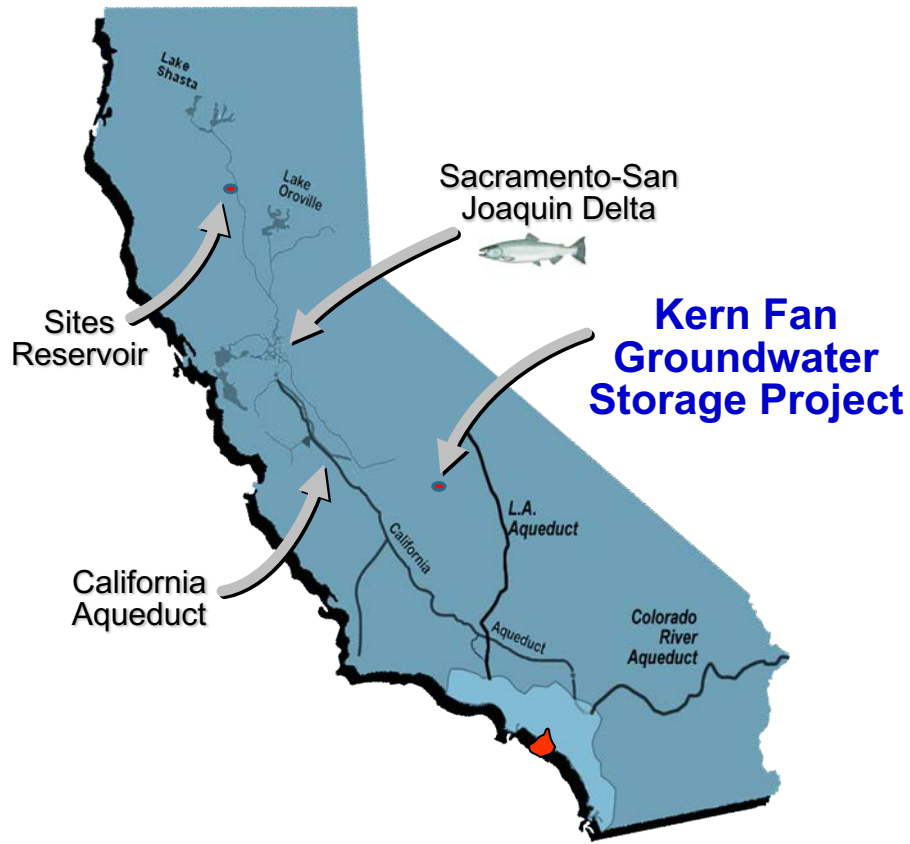
Irvine Ranch Water District (IRWD)

Established in 1961

Provides retail water, sewage and recycled water service to over 181 square miles in Orange County



Rosedale & IRWD have a long, successful history of jointly developing groundwater storage projects in Kern County



The Kern Fan Groundwater Storage Project:

- A new 100,000-acre-foot groundwater storage facility
- Stores “new” water otherwise lost to ocean
- Improves operational flexibility and resiliency
- Reduces pressure on the Delta ecosystem
- Provide water supply, fish and wildlife benefits
- Strategically located near federal, state, and local water conveyance facilities

Joint implementation by Rosedale and IRWD

PROJECT OVERVIEW

PROJECT LOCATION

Tulare Lake Hydrologic Region- Kern County Groundwater Sub-basin





PROJECT FACILITIES AND CAPACITIES

New Conveyance from California Aqueduct

- New turnout
- New 10-mile canal with 500 cfs capacity
- 3 lift stations

1,050 Acres of Recharge Basins

- Wet year recharge capacity of 100,000 AF
- 100,000 AF storage capacity

12 Recovery Wells

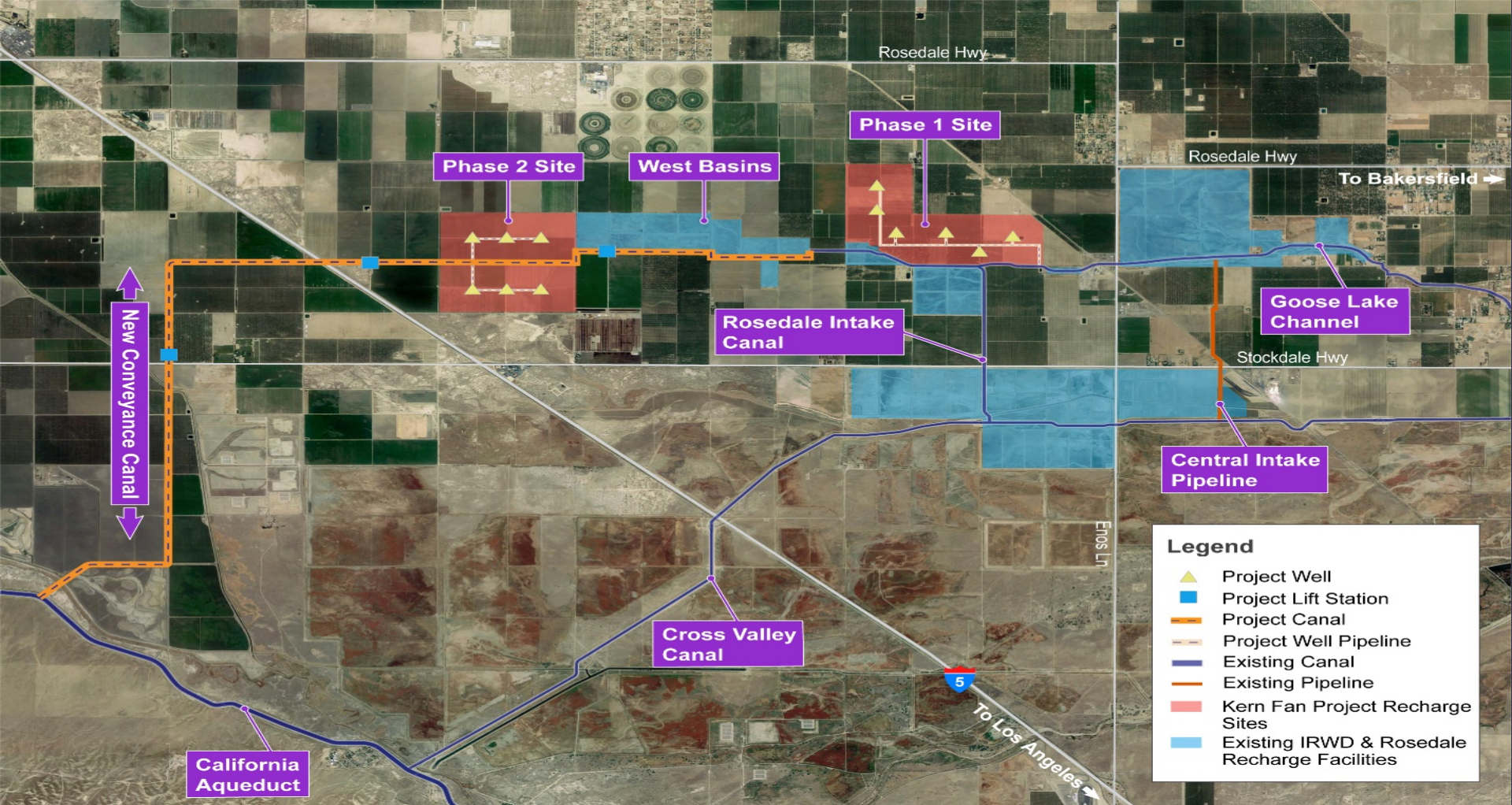
- Combined capacity up to 70 cfs

Stores “new” water otherwise lost to the ocean

- Article 21 water and other supplies

Improves flexibility in operation of State’s water system

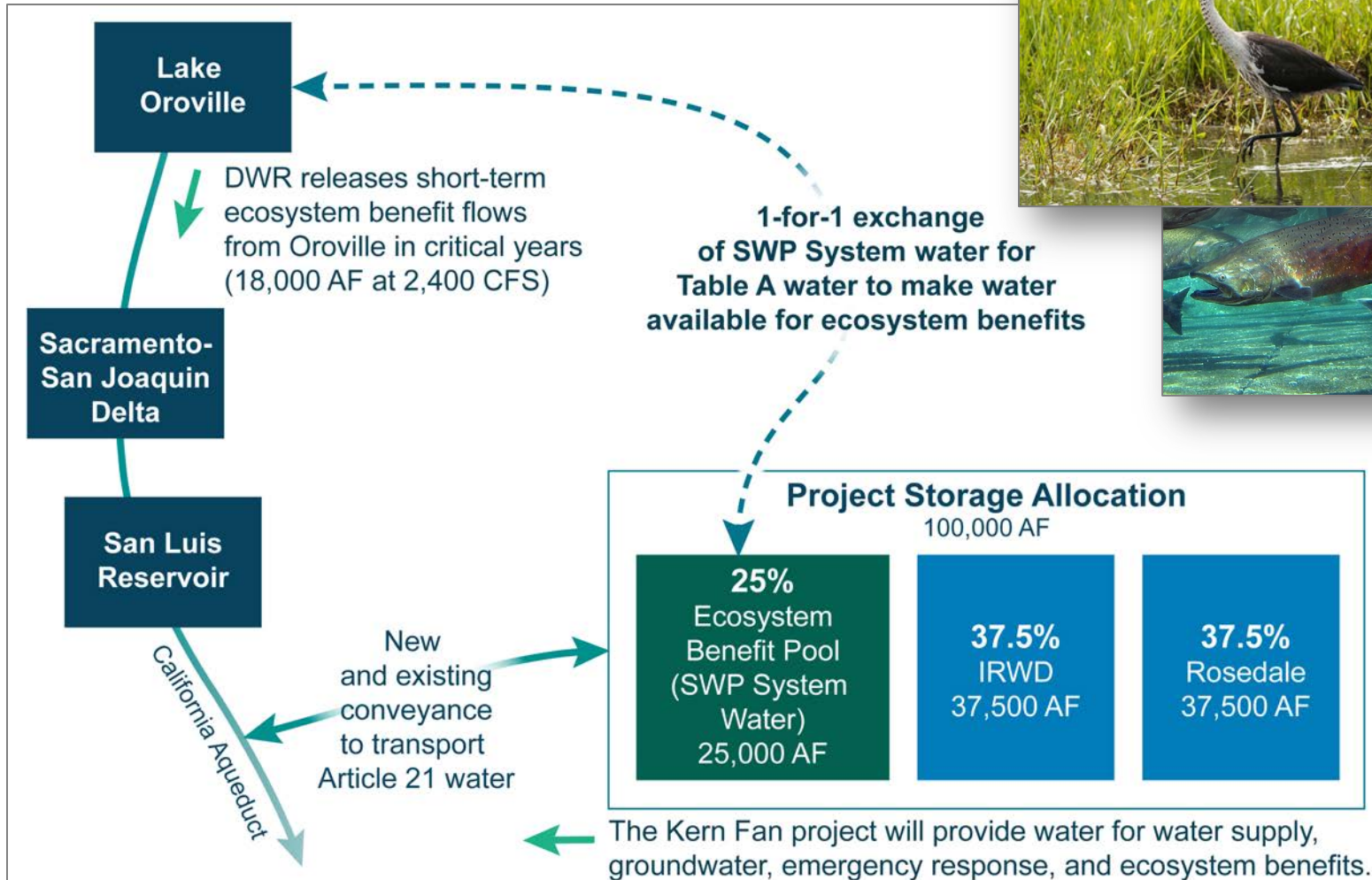
- No negative impacts to the SWP or CVP



PRELIMINARY PROJECT FACILITIES MAP

PROJECT OPERATIONS

Water Releases Coordinated to Benefit Species (e.g. chinook salmon & green sturgeon)



PROJECT COSTS & BENEFITS

Estimated Project Cost:
\$246 M



NPV of \$ 410 M in Benefits



**M&I AND
AGRICULTURE
WATER SUPPLY**



**SUPPLEMENTAL
WATER SUPPLY FOR
CRITICAL DROUGHTS
AND DELTA LEVEE
FAILURES**



**HABITAT FOR DELTA
FISH SPECIES**



**INTERMITTENT
WETLAND HABITAT**



**IMPROVED
GROUNDWATER
LEVELS**



**PERMANENT CROP
PRESERVATION &
ECONOMIC BENEFITS**

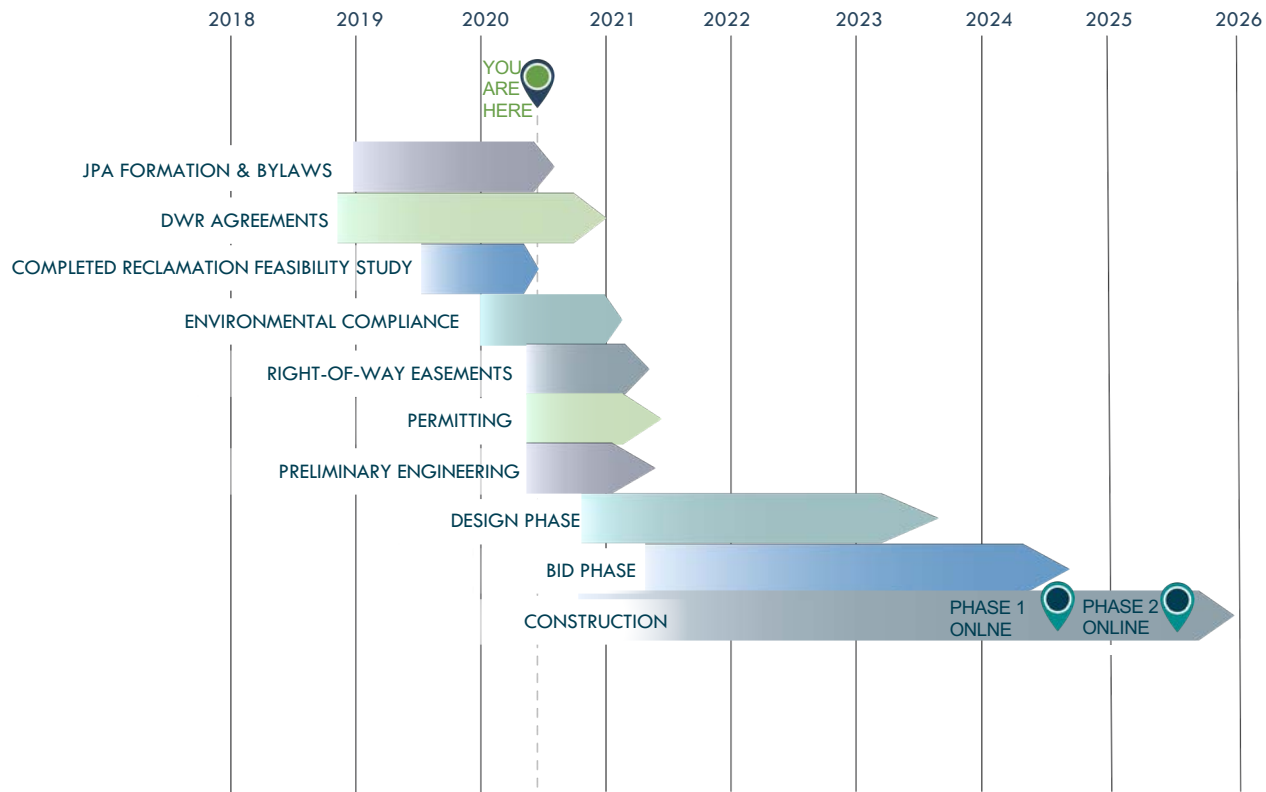
PROJECT STATUS

- ❑ Awarded \$67.5 million in California Prop. 1 Water Storage Funding
 - Project received California Water Commission’s consistency determination and was included in Governor’s letter requesting federal participation
- ❑ Feasibility Report submitted to Reclamation in October 2019
- ❑ 30% Design Report submitted to Reclamation in April 2020
- ❑ Design, Estimating and Construction (DEC) Review completed and Joint Resolution Memo pending
- ❑ Reclamation has determined project meets the WIIN Act Section 4007 requirements and is eligible to be considered for funding pending:
 - Completion of a DEC Review (project technical feasibility);
 - Completion of NEPA compliance; and
 - Secretarial concurrence of technical and financial feasibility prior to January 2021
- ❑ Environmental compliance will be completed Fall 2020/
Early 2021



PROJECT SCHEDULE

Construction will begin by December 16, 2021



KERN FAN PROJECT'S FEDERAL NEXUS

Enhancing federal water goals and priorities to reduce pressure on the CVP and SWP.

- ❑ Improves Delta ecosystems
- ❑ Provides intermittent wetlands and habitat along the Pacific Flyway
- ❑ Creates opportunities for mutually beneficial water exchanges

The Kern Fan Project aligns with Reclamation's mission to develop economical and environmentally beneficial “new” water supplies and new storage while providing better management of the Nation's natural resources.

Funding Request:

**\$70.4 M in WIIN Act
Section 4007 funding**

CONTACT INFORMATION



Eric Averett
General Manager, Rosedale
Office: (661) 589-6045
eaverett@rrbwsd.com

Roy Pierucci
President, Rosedale
Phone: (661) 303-8200
rapnitwithu0310@gmail.com



Paul Cook
General Manager, IRWD
Office (949) 453-5590
cook@irwd.com

Christine Compton
Govt' Relations Officer/Dep.
General Counsel
Office (949) 453-5338
compton@irwd.com