

**Save 50%
on mulch!**

Get half off bulk mulch purchases. Visit [IRWD.com/mulchmadness](https://www.irwd.com/mulchmadness) for details!

pipelines

MARCH 2024



Irvine Ranch
Water District

Save the date

Fix-a-Leak Workshop

Saturday, March 23
9 a.m. – 11:30 a.m.

Learn how to track down and repair leaks in and around your home. Earn extra credit toward our sweepstakes by attending.

Sign-up required:
[IRWD.com/events](https://www.irwd.com/events)

Fix Your Sprinklers

Saturday, April 6
9 a.m. – 11 a.m.

Puzzled by your irrigation system? This workshop will teach you how make repairs on your own.

Sign-up required:
[IRWD.com/events](https://www.irwd.com/events)

Community Tour

Friday, May 17
10 a.m. – 2 p.m.

Join us for a 3-mile walking tour of our Michelson Water Recycling Plant and San Joaquin Marsh Wildlife Sanctuary.

Sign-up required:
[IRWD.com/events](https://www.irwd.com/events)

Fix a Leak Sweepstakes is here!

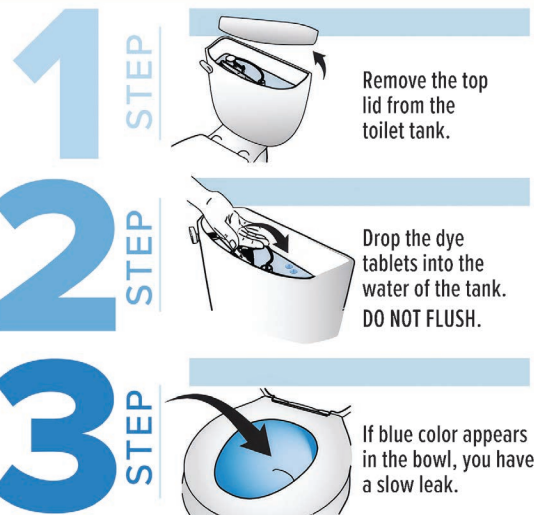
Check for leaks and enter IRWD's Fix a Leak Sweepstakes this month for the opportunity to win a \$100 Home Depot gift card.

Visit [IRWD.com/fixaleak](https://www.irwd.com/fixaleak) and submit a photo of yourself checking for leaks around your home to be entered into the sweepstakes drawing. Here are some ideas:

- Check for toilet leaks by putting food coloring into the tank. If the color leaks into the bowl, you have a leak.
- Fix and adjust broken sprinklers or overspray in your yard.
- Spot a broken sprinkler in the community? Let us know at [IRWD.com/logaleak](https://www.irwd.com/logaleak) so we can follow up on it.
- Attend our Fix a Leak Workshop on March 23.

Winners will be selected daily during Fix a Leak Week, March 18–24, and a final drawing will be held at the end of the month from entries submitted throughout March.

TESTING FOR TOILET LEAKS Check every 6 months to prevent leaks.



Plant like a local:

Get ideas at upcoming garden tour

Looking for some native plant landscapes to inspire your dream to plant like a local? The Orange County Chapter of the California Native Plant Society will be showcasing IRWD's demonstration garden and many others on its 22nd garden tour, California in My Garden.

Registration for the self-guided tour is open now with limited spaces available. Sign up at chapters.cnps.org/oc. Registrants will receive a list of addresses they can visit and peruse from 10 a.m. to 4 p.m., Saturday and Sunday, May 4 and 5.

IRWD planted its native garden in 2022 to complement earlier gardens focused on low-water plants, succulents and turf grass alternatives. Go to [IRWD.com/demogarden](https://www.irwd.com/demogarden) to learn more. The gardens are open for self-guided enjoyment every day at our headquarters at 15600 Sand Canyon Ave., Irvine.



Join us at these Earth Day events

Earth Day is April 22, but celebrations to honor the day are being held locally throughout the month. IRWD is getting in on the fun at these community observances. Stop by to say hello!

Irvine:

Earth Day at Quail Hill

April 13, 11 a.m. – 2 p.m.
39 Shady Canyon Drive

Visit cityofirvine.org/environmental-programs for details on this event and others in April.

Earth Day at the Marsh

April 14, 9 a.m. – 2 p.m.
Riparian View off Campus Drive

Sea and Sage Audubon Society will host activities at IRWD's San Joaquin Marsh Wildlife Sanctuary. Visit seaandsageaudubon.org for details.



Lake Forest:

Earth Day in the Woods

April 20, 10 a.m. – noon
Lake Forest Woods

Lake Forest II MHOA will host its annual celebration featuring presentations, raffles and more. Visit lf2.org for details.

Newport Beach:

Earth Day at the Bay

April 20, 10 a.m. – 4 p.m.
2301 University Drive

Newport Bay Conservancy hosts this family-friendly event at the Muth Interpretive Center. Visit newportbay.org/earth-day for details.



Q: My water pressure seems low. What might cause that?

A: If the situation is limited to one tap, there could be debris or mineral buildup in the faucet, shower head or aerator.

Has there been recent plumbing work completed? Make sure the customer valve on your meter, house valve, or plumbing fixture is completely open.

Your home's pressure regulator may also need adjusting by a plumber. Intermittent drops in pressure can result from a high volume of water being used in your home or neighborhood during peak-demand periods. Lower pressure can also indicate a leak.

Visit IRWD.com and click on the "Meters & Leaks" tab under "Customer Care" for information on leaks, meters and more.

Ask Juan



Q: Hi Juan. I'm planning a beautiful pollinator garden design to replace some noncontiguous grass areas in my landscape. Can I add those areas together to reach the 250-square-foot minimum requirement for a turf removal rebate?

A: Great question! All the eligible square footage replaced will be considered when calculating your rebate, so separate patches in both your front and back yard will count.

Remember that the plants you choose for your pollinator garden will need less water than your lawn, so be sure to adjust your irrigation system so your new plants thrive with just the right amount of water they need. You can find out more at IRWD.com/turfrebate or IRWD.com/landscape.

Got landscape questions? Email AskJuan@IRWD.com or ask on Facebook, X (Twitter) or Instagram with [#irwdcommunity](https://www.instagram.com/irwdcommunity). See past answers at IRWD.com/AskJuan.

California native corner

Juan's March plant: sticky monkey flower

Sticky Monkey Flower (*Mimulus aurantiacus*) is named for the sticky resin that coats its leaves and stems. It blooms profusely from winter through summer, and its nectar is a great food source for native moths, butterflies, insects and birds. It prefers full sun near the coast but needs partial shade inland. — Juan



 **Like Us**
Irvine Ranch
Water District

 **Follow Us**
@IRWDnews

 **Watch Us**
[youtube.com/
IrvineRanchWD](https://youtube.com/IrvineRanchWD)

 **Follow Us**
@IRWDnews

24-Hour customer service: 949-453-5300

Email: CustomerService@IRWD.com

Address: 15600 Sand Canyon Avenue, Irvine, CA 92618

Website: IRWD.com

Board Directors:

Steve LaMar (Div. 2), Karen McLaughlin (Div. 4), Doug Reinhart (Div. 3), Peer Swan (Div. 5), John Withers (Div. 1)

General manager: Paul Cook, PE